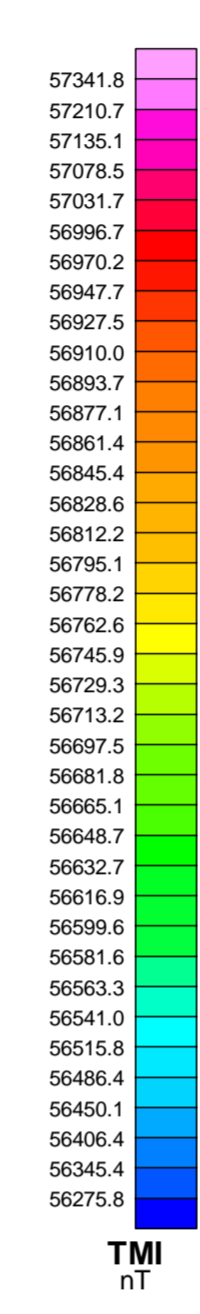
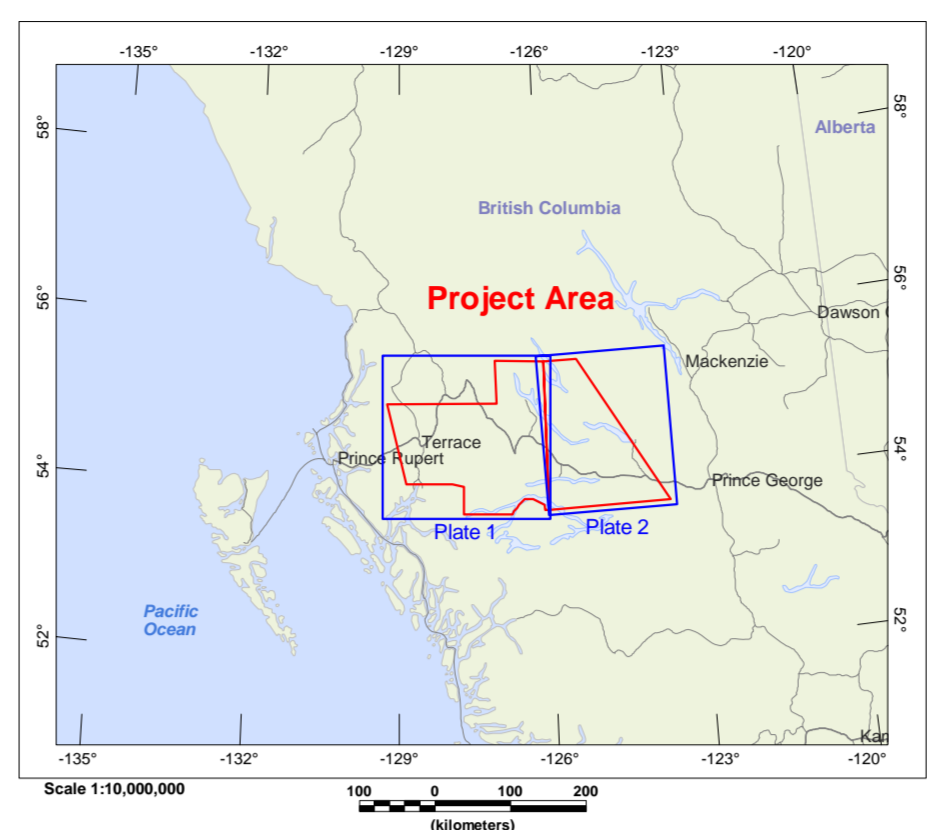
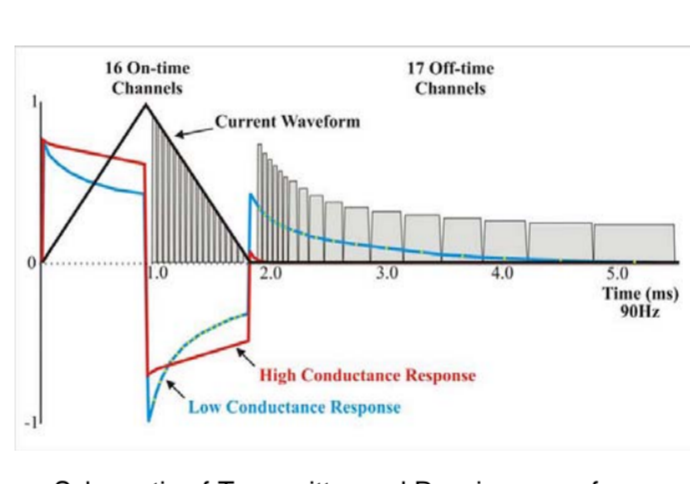
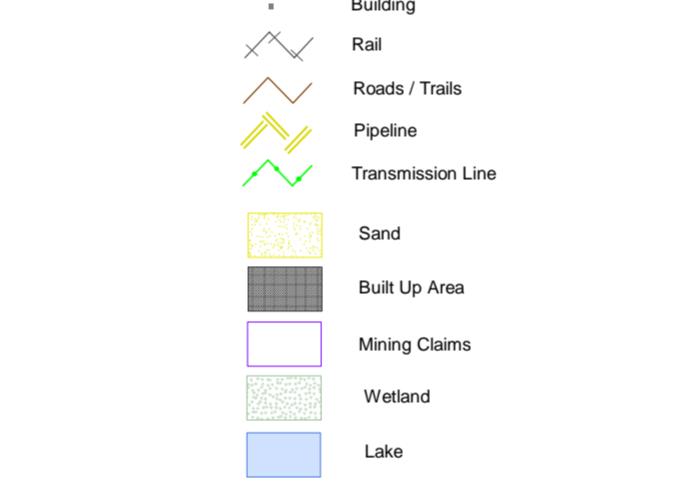


The topographic data base was derived from 1:50,000 MRC Natural Resources Canada (NRC) data.
Topographic data derived from NADA (NADA) (British Columbia Topographic Map) data.
Inset data derived from Natural Resources Canada (NRC) (Canada Base Map).
This map accompanies the technical report entitled: Report on a
Magnetic Resonance Magnetic and Electromagnetic Survey,
Quest West, by Aeroquest Surveys, January 2009.

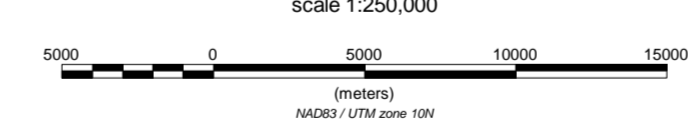


TMI Contour Interval
50nT
100nT
500nT
2500nT



Geoscience BC

SURVEY SPECIFICATIONS:
Survey from August 24 - October 10, 2008
Traverse line spacing: 400 metres
Traverse line direction: 90°/270°
Nominal EM coil height: 30 metres
Aircraft: Aeromobile A-Star 3000 (C-GVIA)
INSTRUMENTATION:
Data acquisition: ADAS & RMS DGR-33
Magnetometer: Geometrics G-823A cesium vapour
Installation: Towed and 31 m above EM coil
Sensitivity: .001 nanoTesla
Electromagnetics: AeroTEM III System (November)
Configuration: Towed coil
NAVIGATION:
Navigation: Differential Global Positioning System (DGPS)
Navigation equipment: AGNAV with MID-TECH RX400p receiver
Radio altimeter: Terra TRA3000TTR-30
POSITIONING:
Datum: NAD83
Map: ADAS 8278137.000
Eccentricity: 0.081819191
MAP PROJECTION:
Projection: Universal Transverse Mercator
Central Meridian: 123°W (Zone 10)
Central Scale Factor: 0.9996
False Easting/Northing: 500,000/0m



Geoscience BC
British Columbia

TOTAL MAGNETIC INTENSITY
Quest West, Plate 2, Blocks D & E

AEROQUEST
SURVEYS
7087 Bath Road, Mississauga, ON, Canada L4T 3T1
Tel: 905.276.7444 Fax: 905.276.7445
January 2009

TMI Plate 2