

GEOLOGY

of the
DEER PARK MAP SHEET
NTS 82E/08



SCALE 1:50 000
NORTH AMERICAN DATUM 1983 - UTM Zone 11
TRANSVERSE MERCATOR PROJECTION

Geology and Compilation by Trygve Höy
Cartography by Wayne Jackaman

LEGEND

CENOZOIC

QUATERNARY

Qal alluvium, sand, gravel, till

EOCENE

ETpe PENTICTON GROUP – undifferentiated volcanic and volcanoclastic rocks; including andesite, dacite, trachyte and some epiclastic rocks of the Maron Formation

mEc CORYELL PLUTONIC SUITE – undifferentiated syenite and monzonite intrusions

Tfp K-feldspar porphyry, porphyritic syenite; K-feldspar phenocrysts in a granular fine-grained syenite to monzonite matrix; Td - Tertiary dyke

mEc1 syenite, fine to medium grained, massive to porphyritic; monzonite

mEc2 syenite, coarse grained, pink, generally massive to locally porphyritic

mEcm monzonite, monzoniorite; medium to coarse grained; some K-feldspar porphyritic monzonite or syenite

mEcc contact zone; mixed Coryell dikes, fine grained granular syenite, syenite porphyry and host granitic rocks

PALEOCENE TO EOCENE (may include J and K intrusions)

ETgr granite and granodiorite, medium-grained, equigranular to porphyritic

MESOZOIC

CRETACEOUS

Kg undifferentiated granite; medium to coarse grained, massive to porphyritic, white to pink granite with variable but generally minor mafic content; local pegmatite phases

Kgp granite, porphyritic, medium to coarse grained with large pink K-feldspar phenocrysts in a granular matrix

Klg granite / granodiorite, medium to coarse grained, relatively fresh with typically 5-10% euhedral to subhedral hornblende

JURASSIC

mJn NELSON PLUTONIC SUITE - undifferentiated granodiorite, granite

mJg granite, granodiorite; massive, generally equigranular, massive to coarse grained

mJp porphyritic granite, granodiorite with K-feldspar phenocrysts, grading to mJg

mJd granodiorite, medium to coarse grained; some granite, quartz diorite

mJq quartz diorite, diorite; medium grained, granular

mJd diorite, minor pyroxene

PALEOZOIC

Pmr MOUNT ROBERTS FORMATION (?) – metasedimentary and metavolcanic rocks

P4v metavolcanics, massive greenstone, minor argillite

P3m limestone

P3i sandstone, argillite

P2 undifferentiated metasediments

P2v greenstone, mafic tuff

P2i siltstone, minor tuff

P2iii calcisilicate schist, siltstone

P2ii siltstone, argillite

P2i calcisilicate schist, gneiss, marble

Pas argillaceous siltstone

Pss siltstone, argillite, sandstone

Pv metavolcanics, mafic tuff

Pm limestone

P1a granodiorite, amphibolite, hornblende gneiss

P1 geissic amphibolite, granodiorite

CPa ANARCHIST GROUP (?) – mafic volcanics, argillite, dark schist

PROTEROZOIC - EARLY PALEOZOIC

PRgf GRAND FORKS COMPLEX – paragneiss, schist, pegmatite, marble

SYMBOLS

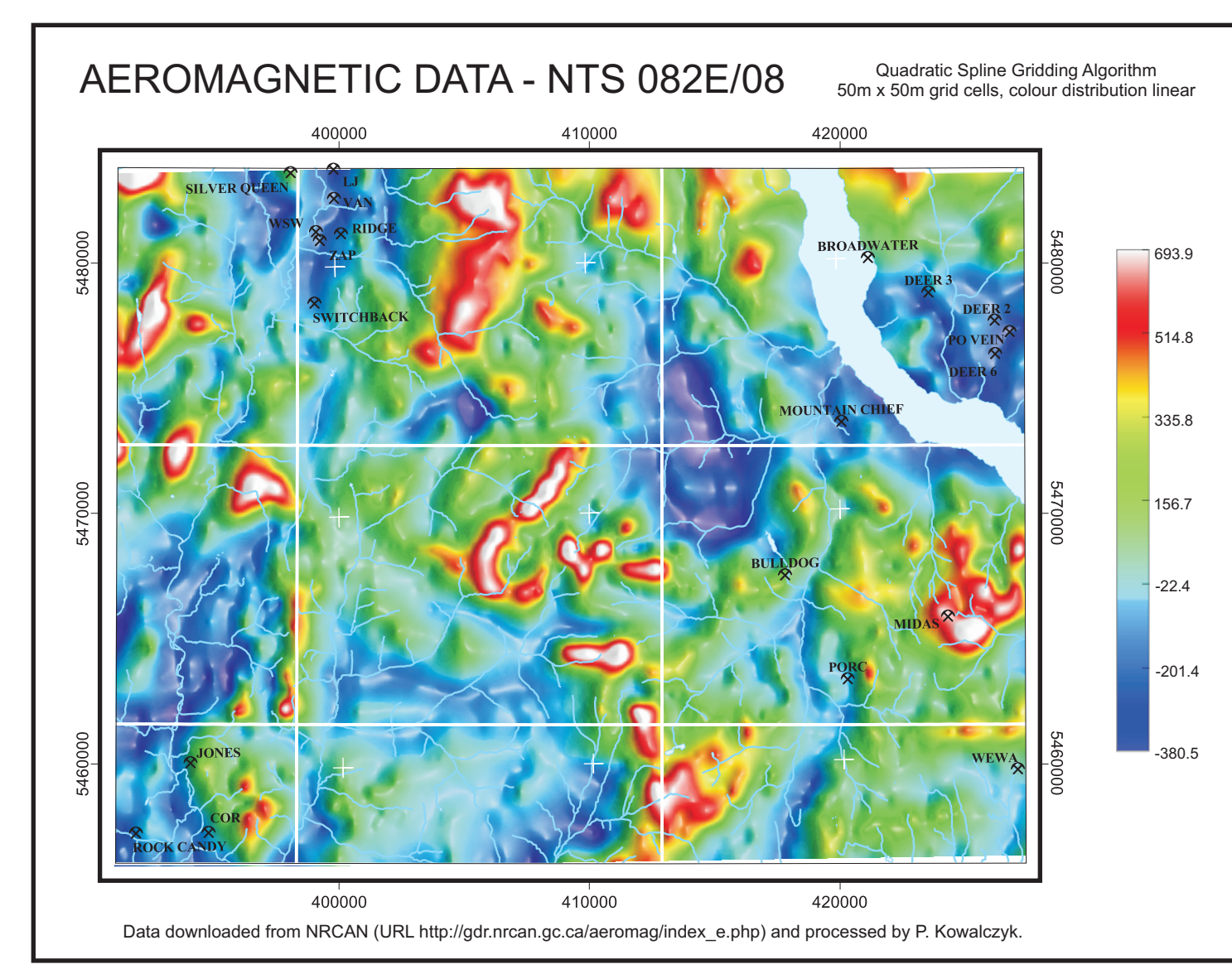
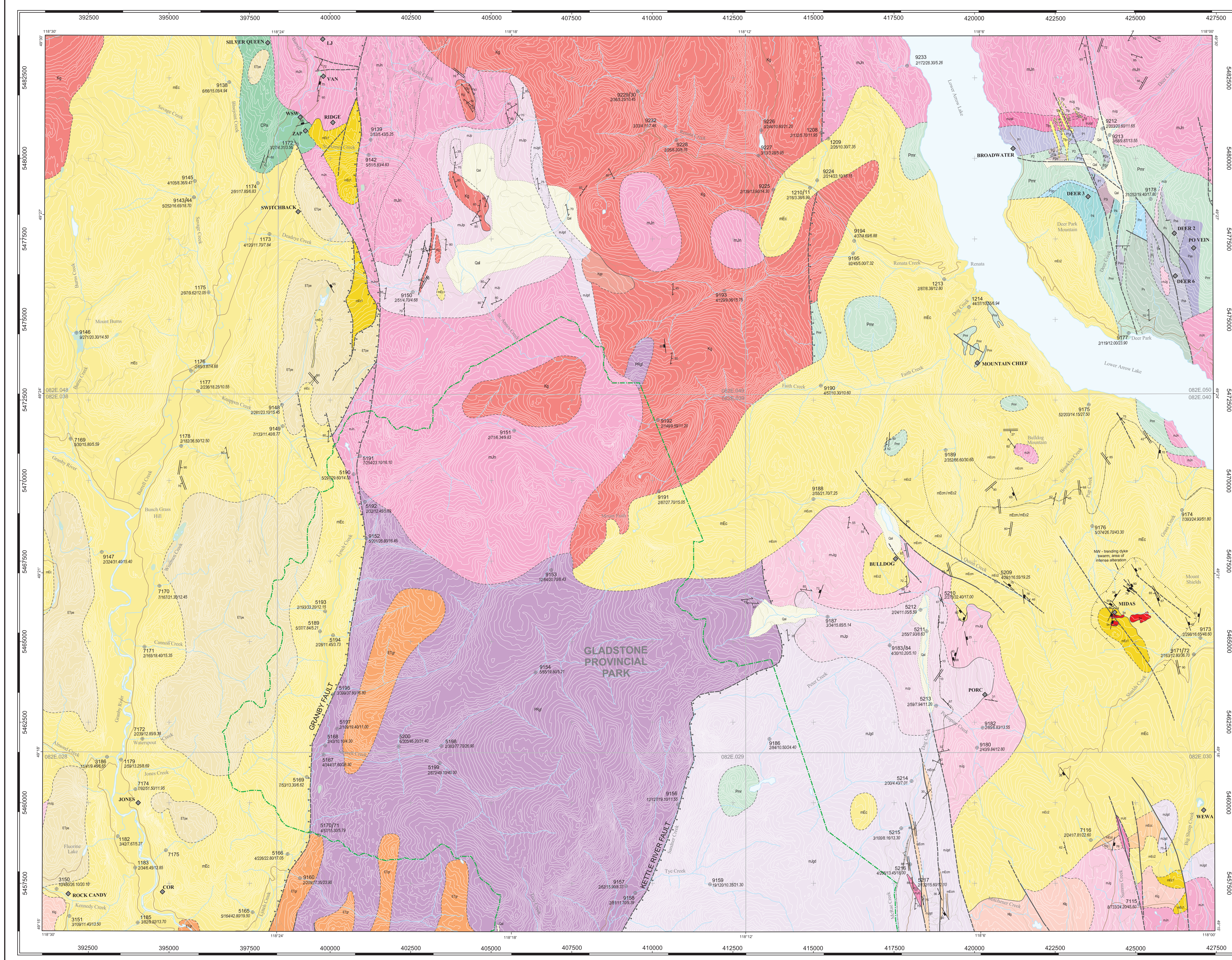
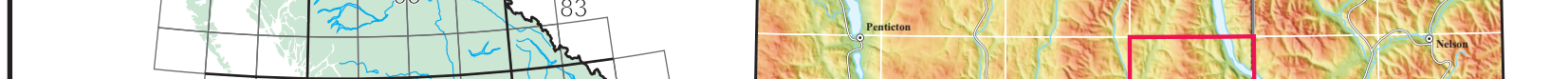
CONTACT, DEFINED, APPROX, GRADATIONAL
CONTACT OF ALLUVIUM
FAULT, DEFINED, APPROX
NORMAL FAULT
FAULT
BEDDING
FOLIATION
VEIN
DYKE

MINERAL OCCURRENCE (MINFILE NAME)
RIS STREAM SITE (ID NUMBER & AUIAGCUPR)
BRECCIA
GNEISSIC ROCKS
PRIMARY ROAD, SECONDARY ROAD, RAIL
PARK BOUNDARY

BASE MAP INFORMATION
Digital base acquired from
Natural Resources Canada Geospatial Portal
URL: <http://geospatial.gc.ca/geospatial/index.html>
© Department of Natural Resources Canada. All rights reserved.

APPROXIMATE MEAN DECLINATION 2010
FOR CENTRE OF MAP 82E/08:
ANNUAL CHANGE DECREASING 0.11°

LOCATION MAP



SOURCES OF DATA

Geology

Coffin, D. (1989): Assessment report on the Shorts and Chewmi mineral claims, B.C. Ministry of Energy and Mines, Assessment report 19, 507.

Coffin, D. (1992): Assessment report on the Burrell property, Greenwood Mining Division, B.C. Ministry of Energy and Mines, Assessment report 22, 907.

Høy, T. (2006): Geology and rock geochemistry, JJ property, southeastern B.C.; B.C. Ministry of Energy and Mines, Assessment report 28, 301.

Høy, T. (2008): Geology and mineralization, Deer Park property, southern B.C.; B.C. Ministry of Energy and Mines, Assessment report 29, 356.

Little, H.W. (1957): Kettle River, British Columbia; Geological Survey of Canada, Map 6-1957.

Pegg, R.S. (1978): Geochemical report, HC claims, #1 - #4, Knappan Creek area, Greenwood Mining Division; B.C. Ministry of Energy and Mines, Assessment report 6719.

Pollock, T. (1982): Drilling report, Deer Park molybdenum property, Trail Creek Mining Division, B.C. Ministry of Energy and Mines, Assessment report 10, 301.

Smallwood, R. and Green, C. (1990): Geophysical, geological and trench sampling report on the Mountain Chief group of mineral claims, Trail Creek Mining Division; B.C. Ministry of Energy and Mines, Assessment report 20, 141.

Tempelman-Kluit, D. J. (1989): Geology, Penticton, British Columbia; Geological Survey of Canada, Map 1736A.

Other

Canadian Aeromagnetic Data Base (2010): Geoscience Data Repository, Geological Survey of Canada, Earth Sciences Sector, Natural Resources Canada, Government of Canada.

Jackman, W. (2010): QUEST-South Project Sample Reanalysis; Geoscience BC, Report 2010-4, 4 p.

Leit, R.E.W. (2005): Regional geochemical survey database on CD; BC Ministry of Energy, Mines and Petroleum Resources, GeoFile 2005-17, CD-ROM.

MINFILE (2009): MINFILE BC mineral deposits database; BC Ministry of Energy, Mines and Petroleum Resources.

MINFILE

Number	Name	Status	Commodities	Deposit type
082ESE070	Rock Candy	Past Producer	Fluorite, silica, (Cu, Pb)	Barite-fluorite veins
082ESE105	Mountain Chief	Past Producer	Cu, Ag, Au, (Pb, Zn, Mo)	Cu skarn
082ESE108	Silver Queen	Showing	Cu, Pb, Ag	Polymetallic veins Ag-Pb-Zn+/-Au
082ESE136	Van	Showing	Zn, Cu	Polymetallic veins Ag-Pb-Zn+/-Au
082ESE162	Midas	Showing	Mo, Cu, (W, Zn)	Porphyry Cu +/- Mo +/- Au
082ESE167	Wewa	Showing	Mo, Cu, F	Vein, breccia and stockwork
082ESE177	WSW	Showing	Au, Ag, Cu, Pb, Zn	Polymetallic veins Ag-Pb-Zn+/-Au
082ESE178	LJ	Showing	Au, Ag, Pb, Cu, Mo	Polymetallic veins Ag-Pb-Zn+/-Au
082ESE211	Broadwater	Past Producer	Limestone	Limestone
082ESE268	Porc	Showing	Dimension Stone	Dimension stone - granite
082ESE269	Jones	Showing	Dimension Stone	Dimension stone - granite
082ESE270	Jones	Showing	Dimension Stone	Dimension stone - granite
082ESE271	Zap	Showing	Cu, Pb, Zn, Au, Ag	Polymetallic veins Ag-Pb-Zn+/-Au
082ESE273	Switchback	Showing	Ag, Au	Epithermal Au-Ag-Cu: high sulphidation
082ESE273	Ridge	Showing	Au	Polymetallic veins Ag-Pb-Zn+/-Au
082ESE(new)	Deer 3	Showing	Ag, Pb, Zn	Polymetallic veins Ag-Pb-Zn+/-Au
082ESE(new)	Deer 2	Showing	Au, Cu	Au-quartz vein
082ESE(new)	Deer 6	Showing	Au, Cu	Au-quartz vein
082ESE(new)	Po Vein	Showing	Cu, Au	Massive pyrrhotite vein
082ESE(new)	Bulldog	Showing	Cu	Au-quartz vein, shear zone

URL: <http://www.em.gov.bc.ca/Mining/Geosurv/Minfile/>