



Report 2010 - 13

QUEST South
Regional Geochemical Data

SOUTHERN
BRITISH COLUMBIA

(082E, L, M; 092H, I, J, O & P)



TRANSVERSE MERCATOR PROJECTION
NORTH AMERICAN DATUM 1983

Uranium (U)

Percentile	Concentrations		
	Stream	Lake	Till
MAX	353.0	31.1	3.7
95TH	20.9	12.0	3.0
90TH	14.0	10.0	2.7
70TH	6.1	4.8	2.2
50TH	3.4	3.1	1.9
30TH	2.1	2.1	1.7
MIN	0.2	0.2	1.0

Summary Statistics

Stream Sediments

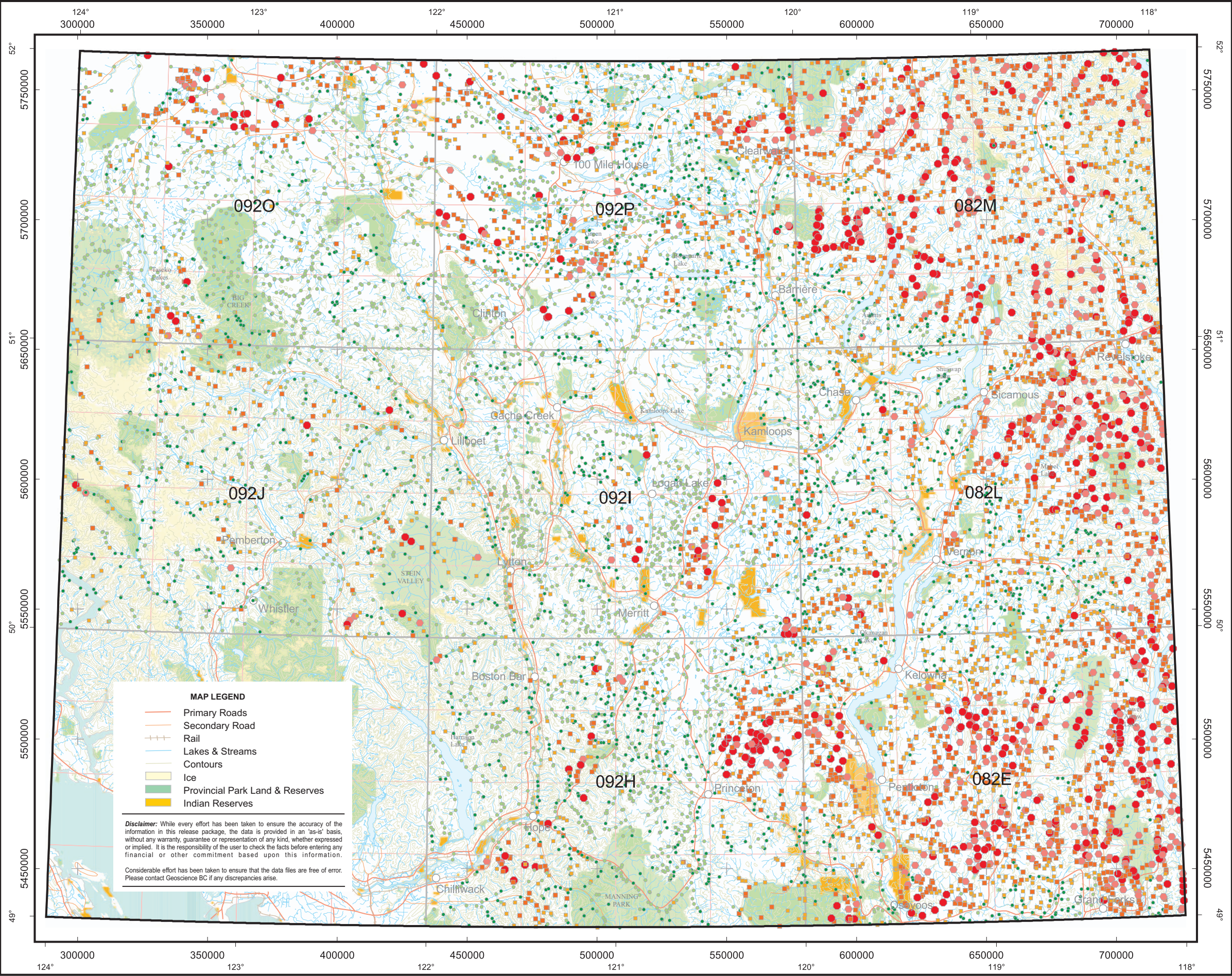
Variable -	U	Mean -	6.46
Units -	ppm	Median -	3.40
DL -	0.2	Mode -	1.50
Method -	INAA	Range -	352.8
N -	8637	StD -	10.26
N>DL -	8619	CV -	1.589

Lake Sediments

Variable -	U	Mean -	4.47
Units -	ppm	Median -	3.10
DL -	0.2	Mode -	1.40
Method -	INAA	Range -	30.9
N -	769	StD -	4.31
N>DL -	765	CV -	0.963

Basal Till Samples

Variable -	U	Mean -	2.00
Units -	ppm	Median -	1.90
DL -	0.2	Mode -	1.60
Method -	INAA	Range -	2.7
N -	190	StD -	0.53
N>DL -	190	CV -	0.265



QUEST South
Regional Geochemical Data

SOUTHERN
BRITISH COLUMBIA
(082E, L, M; 092H, I, J, O & P)



TRANSVERSE MERCATOR PROJECTION
NORTH AMERICAN DATUM 1983

Ytterbium (Yb)

Percentile	Concentrations		
	Stream	Lake	Till
MAX	-	4	4
95TH	-	2	3
90TH	-	2	3
70TH	-	2	3
50TH	-	2	2
30TH	-	2	2
MIN	-	2	2

Summary Statistics

Stream Sediments

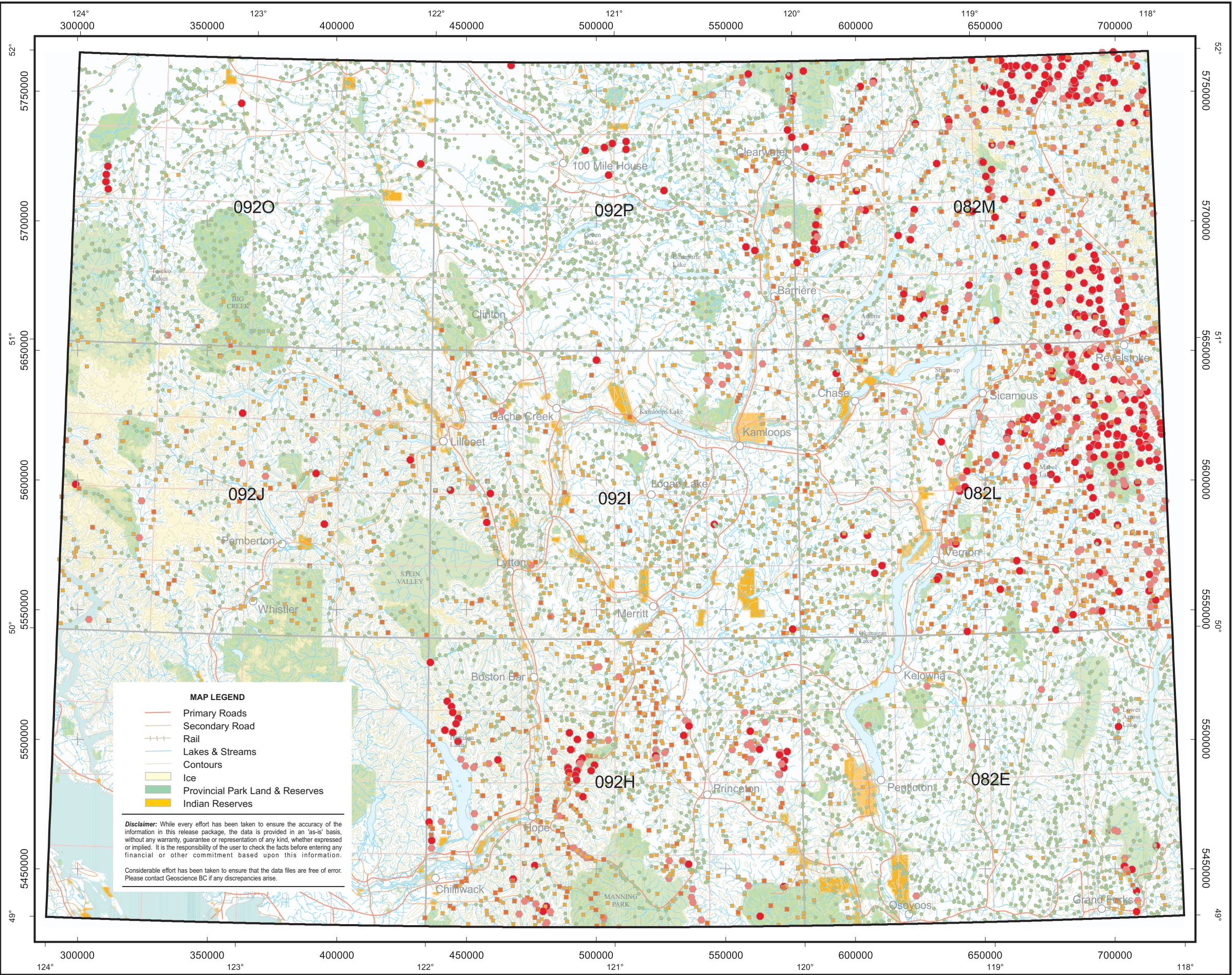
Variable -	Yb	Mean -	2.7
Units -	ppm	Median -	2.0
DL -	2	Mode -	2.0
Method -	INAA	Range -	57
N -	8637	StD -	1.79
N>DL -	3104	CV -	0.652

Lake Sediments

Variable -	Yb	Mean -	2.0
Units -	ppm	Median -	2.0
DL -	2	Mode -	2.0
Method -	INAA	Range -	2
N -	769	StD -	0.15
N>DL -	14	CV -	0.073

Basal Till Samples

Variable -	Yb	Mean -	2.3
Units -	ppm	Median -	2.0
DL -	2	Mode -	2.0
Method -	INAA	Range -	2
N -	190	StD -	0.48
N>DL -	62	CV -	0.207





Report 2010 - 13

QUEST South
Regional Geochemical Data

SOUTHERN
BRITISH COLUMBIA

(082E, L, M; 092H, I, J, O & P)



TRANSVERSE MERCATOR PROJECTION
NORTH AMERICAN DATUM 1983

Fluorine (F)

Percentile	Concentrations		
	Stream	Lake	Till
MAX	-	780	1270
95TH	-	410	750
90TH	-	360	650
70TH	-	290	450
50TH	-	250	290
30TH	-	220	190
MIN	-	110	10

Summary Statistics

Stream Sediments

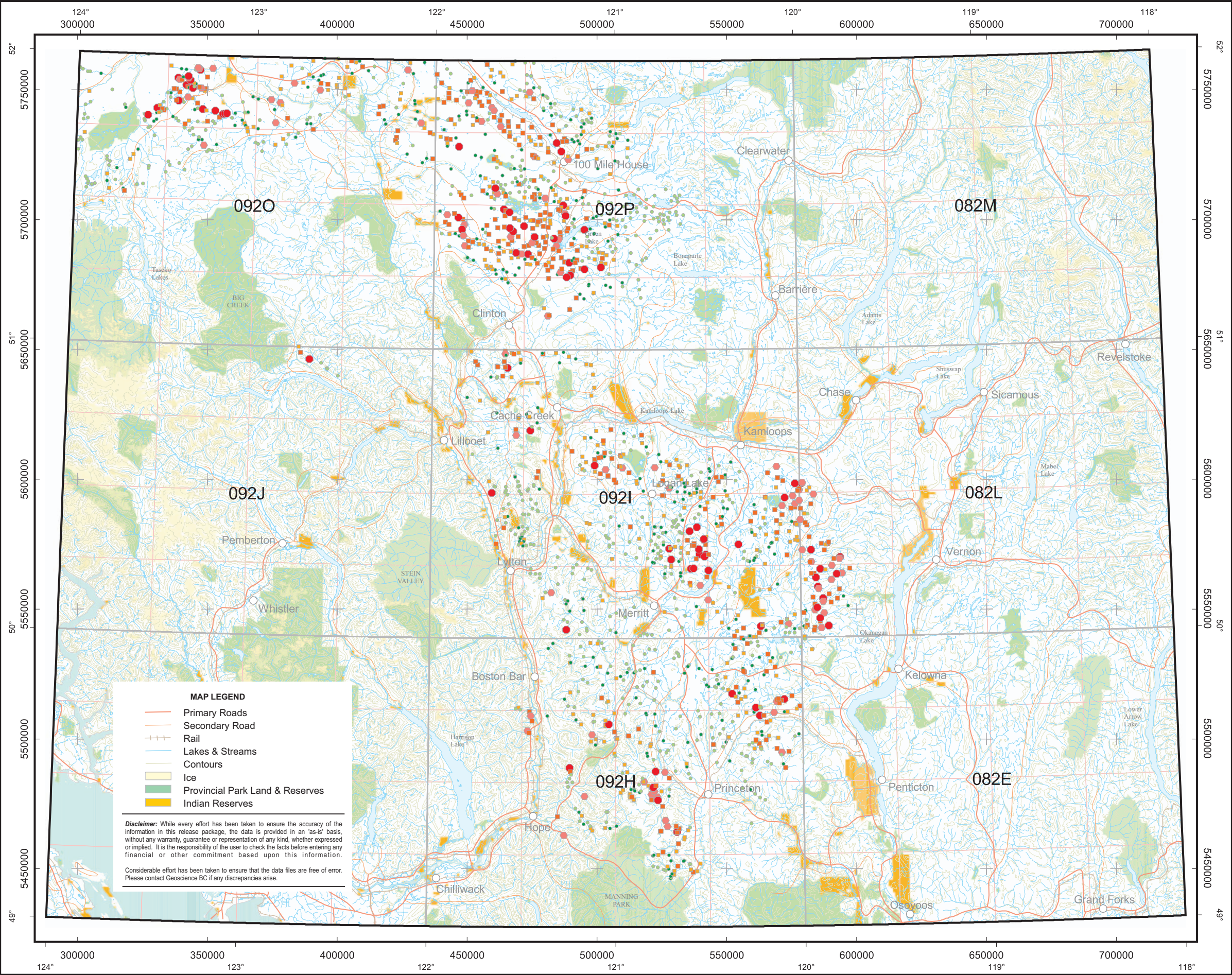
Variable -	F	Mean -	264.7
Units -	ppm	Median -	250.0
DL -	10	Mode -	220.0
Method -	ION	Range -	670
N -	742	StD -	78.35
N>DL -	742	CV -	0.296

Lake Sediments

Variable -	F	Mean -	340.9
Units -	ppm	Median -	290.0
DL -	10	Mode -	120.0
Method -	ION	Range -	1260
N -	769	StD -	223.55
N>DL -	764	CV -	0.656

Basal Till Samples

Variable -	F	Mean -	444.3
Units -	ppm	Median -	430.0
DL -	10	Mode -	410.0
Method -	ION	Range -	490
N -	190	StD -	79.68
N>DL -	190	CV -	0.179





Report 2010 - 13

QUEST South
Regional Geochemical Data

SOUTHERN
BRITISH COLUMBIA

(082E, L, M; 092H, I, J, O & P)



TRANSVERSE MERCATOR PROJECTION
NORTH AMERICAN DATUM 1983

Loss on Ignition (LOI)

Percentile	Concentrations		
	Stream	Lake	Till
MAX	54.2	90.5	12.8
95TH	27.2	73.4	9.5
90TH	20.0	65.4	8.4
70TH	13.5	49.7	5.9
50TH	10.6	41.9	5.0
30TH	8.1	34.6	4.3
MIN	1.8	6.7	1.3

Summary Statistics

Stream Sediments

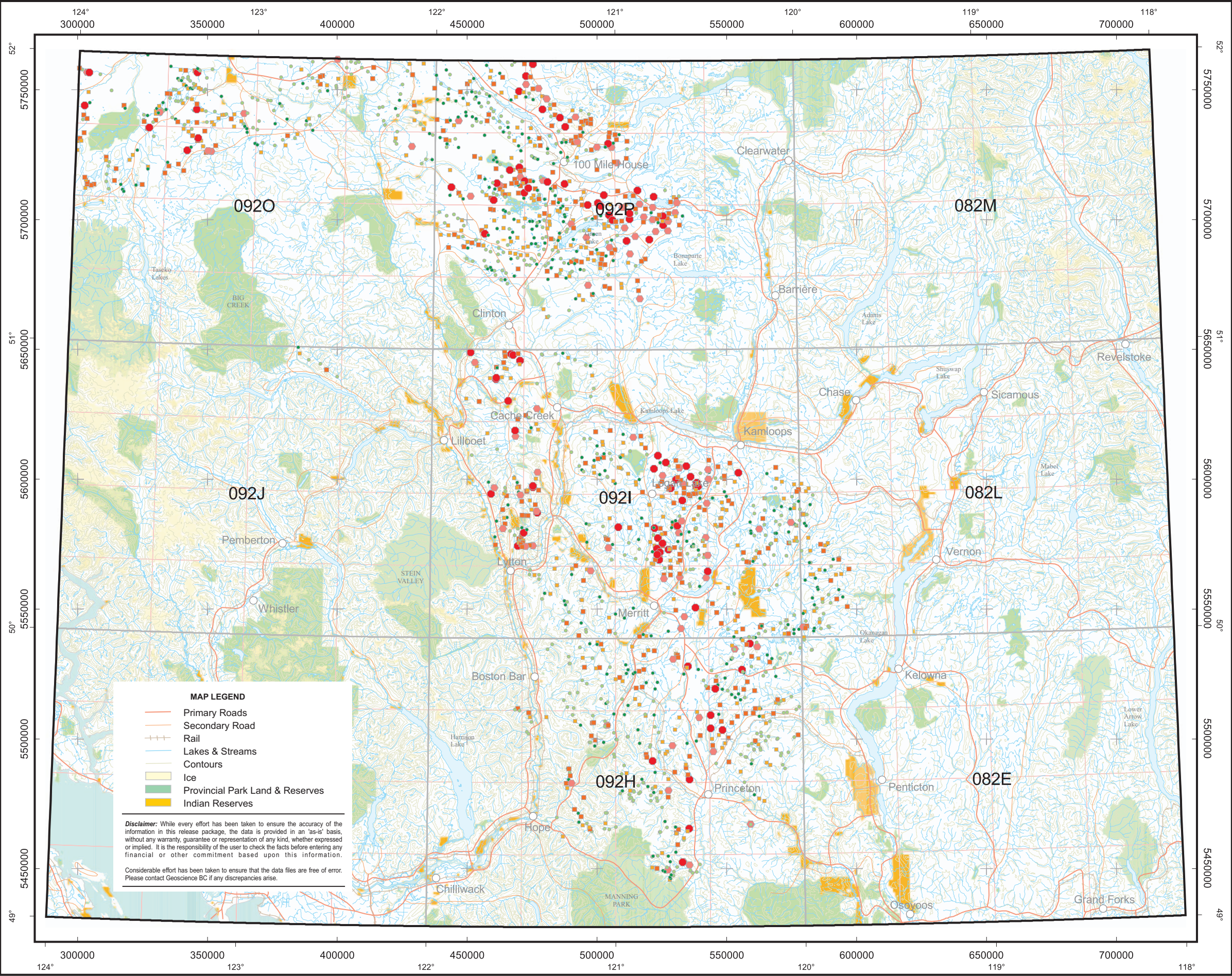
Variable -	LOI	Mean -	12.03
Units -	%	Median -	10.60
DL -	0.1	Mode -	11.90
Method -	GRAV	Range -	52.4
N -	742	StD -	7.30
N>DL -	742	CV -	0.606

Lake Sediments

Variable -	LOI	Mean -	43.63
Units -	%	Median -	41.90
DL -	0.1	Mode -	37.00
Method -	GRAV	Range -	83.8
N -	769	StD -	15.98
N>DL -	769	CV -	0.366

Basal Till Samples

Variable -	LOI	Mean -	5.31
Units -	%	Median -	5.00
DL -	0.1	Mode -	4.30
Method -	GRAV	Range -	11.5
N -	190	StD -	2.18
N>DL -	190	CV -	0.411





Report 2010 - 13

QUEST South
Regional Geochemical Data

SOUTHERN
BRITISH COLUMBIA

(082E, L, M; 092H, I, J, O & P)



TRANSVERSE MERCATOR PROJECTION
NORTH AMERICAN DATUM 1983

Fluoride (FW)

Percentile	Concentrations	
	Stream	Lake
MAX	3300	16000
95TH	260	630
90TH	190	440
70TH	80	270
50TH	48	200
30TH	30	150
MIN	5	20

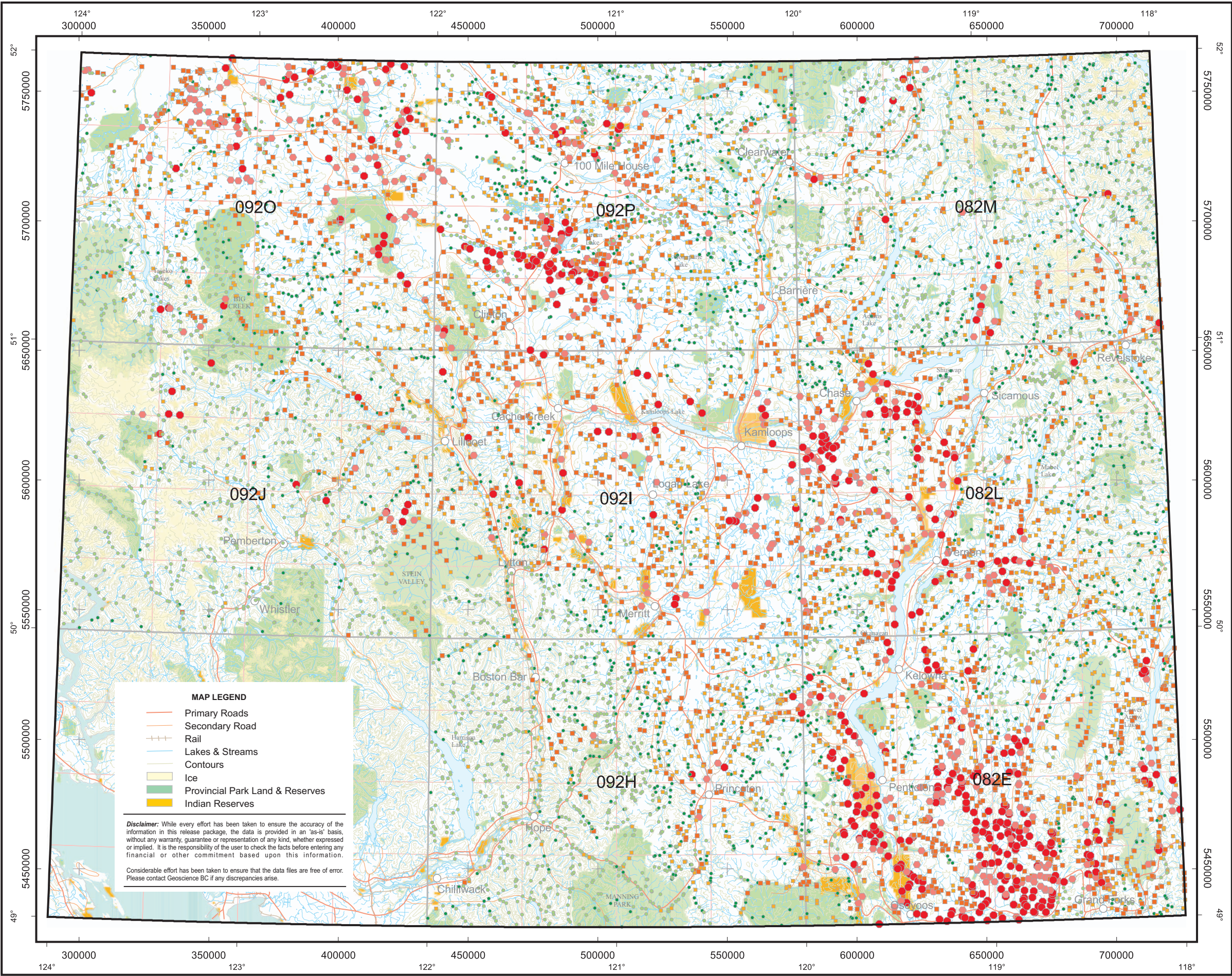
Summary Statistics

Stream Waters

Variable -	FW	Mean -	28.78
Units -	ppb	Median -	20.40
DL -	10	Mode -	20.30
Method -	ION	Range -	1789.55
N -	8416	StD -	44.39
N>DL -	7298	CV -	1.543

Lake Waters

Variable -	FW	Mean -	330.1
Units -	ppb	Median -	200.0
DL -	10	Mode -	150.0
Method -	ION	Range -	15980
N -	769	StD -	916.67
N>DL -	769	CV -	2.777





Report 2010 - 13

QUEST South
Regional Geochemical Data

SOUTHERN
BRITISH COLUMBIA
(082E, L, M; 092H, I, J, O & P)



TRANSVERSE MERCATOR PROJECTION
NORTH AMERICAN DATUM 1983

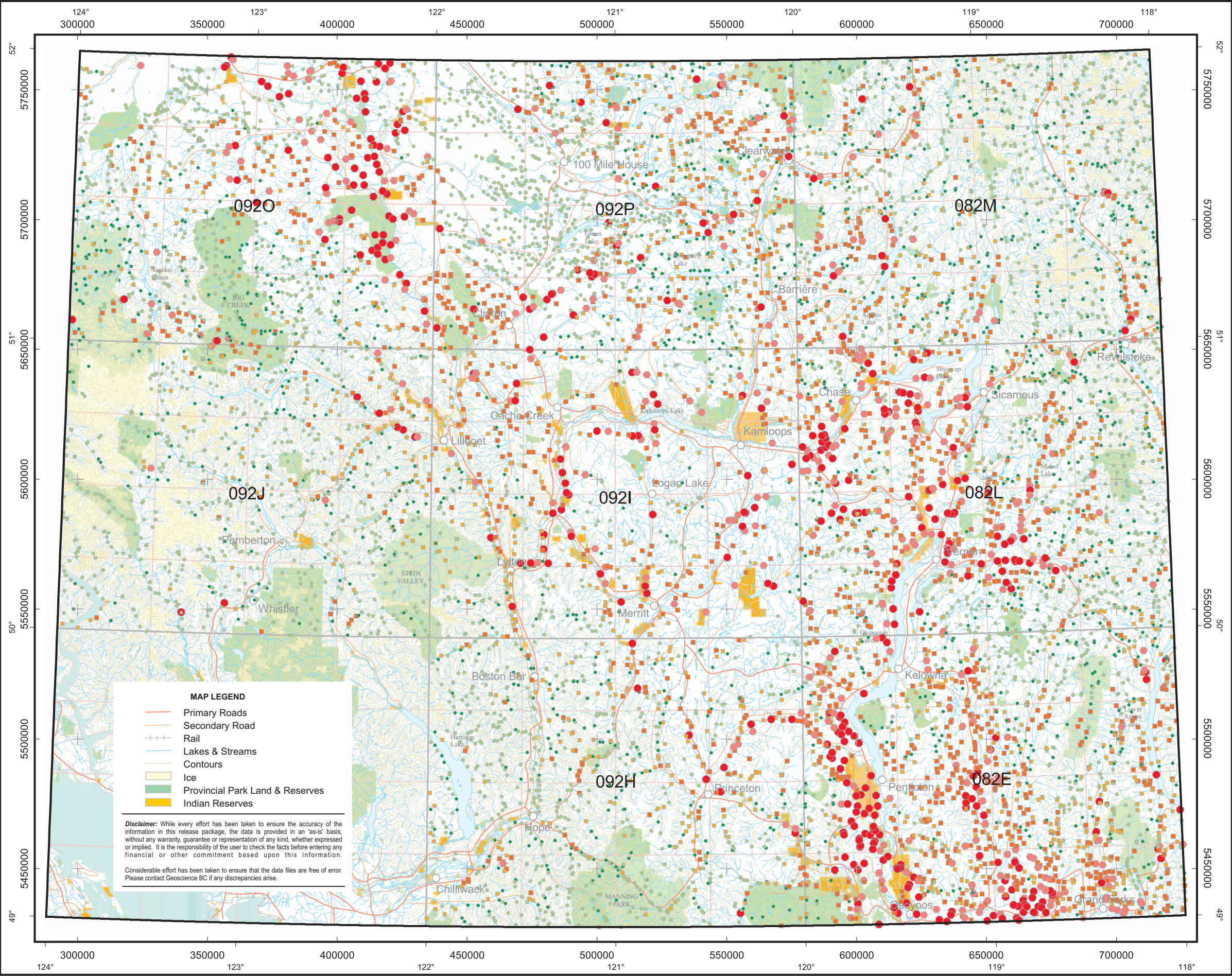
Uranium (UW)

Percentile		Concentrations	
		Stream	
MAX	-	43.80	
95TH	-	1.90	
90TH	-	1.00	
70TH	-	0.28	
50TH	-	0.12	
30TH	-	0.05	
MIN	-	0.02	

Summary Statistics

Stream Waters

Variable -	UW	Mean -	0.49
Units -	ppb	Median -	0.12
DL -	.02	Mode -	0.02
Method -	LIF	Range -	43.78
N -	7752	StD -	1.60
N>DL -	5989	CV -	3.265





Report 2010 - 13

QUEST South
Regional Geochemical Data

SOUTHERN
BRITISH COLUMBIA

(082E, L, M; 092H, I, J, O & P)



TRANSVERSE MERCATOR PROJECTION
NORTH AMERICAN DATUM 1983

Conductivity (CND)

Percentile	Concentrations	
	Stream	Lake
MAX	1043	20000
95TH	419	12100
90TH	363	5730
70TH	199	1136
50TH	115	648
30TH	61	409
MIN	1	26

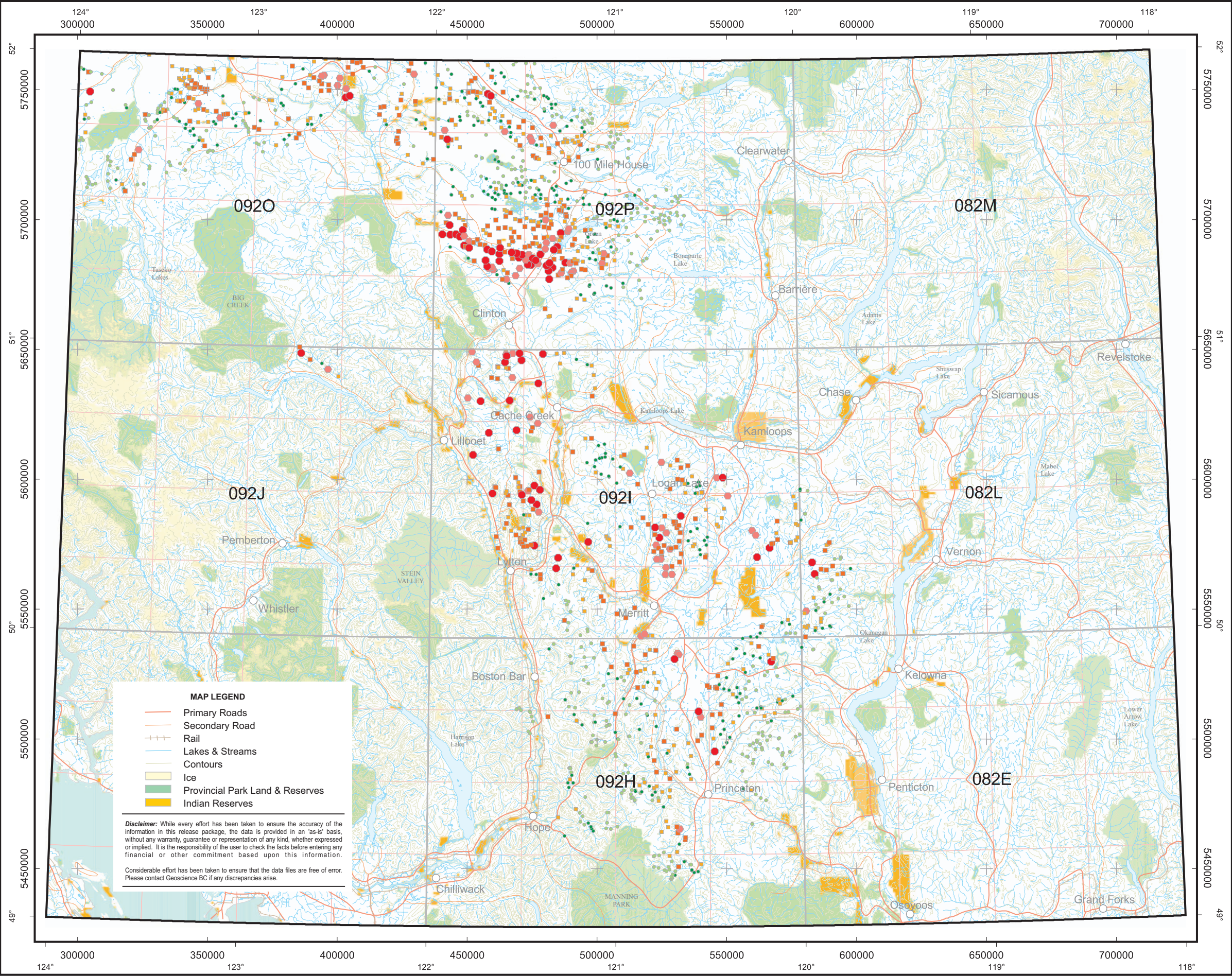
Summary Statistics

Stream Waters

Variable -	CND	Mean -	157.9
Units -	uS	Median -	115.0
DL -	1	Mode -	10.0
Method -	ISE	Range -	1042
N -	664	StD -	139.29
N>DL -	661	CV -	0.882

Lake Waters

Variable -	CND	Mean -	2147.5
Units -	uS	Median -	648.0
DL -	1	Mode -	410.0
Method -	ISE	Range -	19974
N -	769	StD -	4270.71
N>DL -	769	CV -	1.989





Report 2010 - 13

QUEST South
Regional Geochemical Data

SOUTHERN
BRITISH COLUMBIA

(082E, L, M; 092H, I, J, O & P)



TRANSVERSE MERCATOR PROJECTION
NORTH AMERICAN DATUM 1983

PH (pH)

Percentile	Concentrations	
	Stream	Lake
MAX	9.9	10.8
95TH	8.3	10.3
80TH	8.0	9.7
20TH	7.3	8.7
5 TH	6.2	8.1
MIN	3.2	6.5

Summary Statistics

Stream Waters

Variable -	PH	Mean -	7.55
Units -		Median -	7.60
DL -	0.1	Mode -	7.50
Method -	ISE	Range -	6.7
N -	8416	StD -	0.54
N>DL -	8416	CV -	0.071

Lake Waters

Variable -	PH	Mean -	9.04
Units -		Median -	8.90
DL -	0.1	Mode -	8.80
Method -	ISE	Range -	4.3
N -	769	StD -	0.68
N>DL -	769	CV -	0.075

