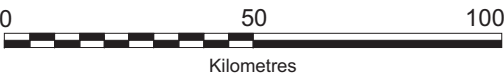


Report 2010 - 13

## QUEST South Regional Geochemical Data

### SOUTHERN BRITISH COLUMBIA

(082E, L, M; 092H, I, J, O & P)



TRANSVERSE MERCATOR PROJECTION  
NORTH AMERICAN DATUM 1983

## SAMPLE LOCATIONS

### 2009 STREAM & TILL SITES

- 1004 STREAM Sample Site and ID
- 9002 BASAL TILL Sample Site and ID

### Previous STREAM Surveys

- NTS 082E - 1976 RGS/NGR Penticton stream survey
- NTS 082L - 1976 RGS/NGR Vernon stream survey
- NTS 082M - 1976 RGS/NGR Seymour Arm stream survey
- NTS 092H - 1981 RGS/NGR Hope stream survey
- NTS 092I - 1981 RGS/NGR Ashcroft stream survey
- NTS 092J - 1981 RGS/NGR Pemberton stream survey
- NTS 092O - 1979 RGS/NGR Taseko Lakes stream survey
- NTS 092P - 1979 RGS/NGR Bonaparte Lake stream survey

### Previous LAKE Surveys

- GEOBC REPORT 2007-06 Cariboo lake survey

### Previous Detailed TILL Surveys (not included in report)

- EMPR Open File 1997-09
- EMPR Open File 1998-06
- EMPR Open File 2000-17
- EMPR Open File 2000-18
- GSC Open File 2909



QUEST South  
Regional Geochemical Data

SOUTHERN  
BRITISH COLUMBIA  
(082E, L, M; 092H, I, J, O & P)



TRANSVERSE MERCATOR PROJECTION  
NORTH AMERICAN DATUM 1983

BEDROCK GEOLOGY  
and  
MINERAL OCCURRENCES

Map Legend

GEOLOGY (after Massey *et al.*, 2005)

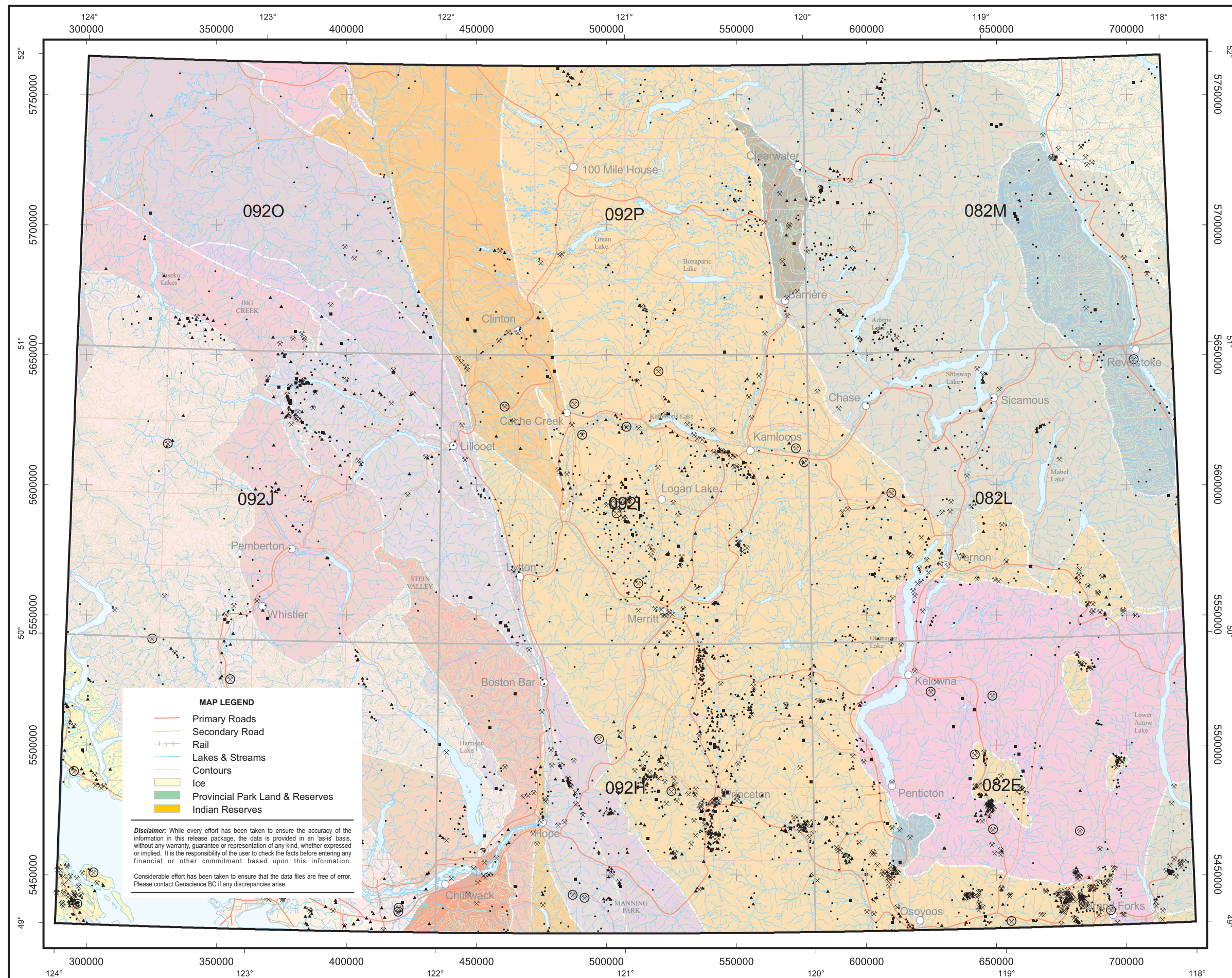
[http://www.em.gov.bc.ca/Mining/Geolsurv/  
Publications/GeoFiles/Gf2005-1/toc.htm](http://www.em.gov.bc.ca/Mining/Geolsurv/Publications/GeoFiles/Gf2005-1/toc.htm)

- Bridge River
- Cache Creek
- Cadwalleder
- Chilliwack
- Coast complex
- Harrison
- Kootenay
- Methow
- Monashee
- Post Accretionary
- Quesnellia
- Shuksan
- Slide Mountain
- Stikinia

MINFILE

[http://www.em.gov.bc.ca/Mining/Geolsurv/  
Minfile/products.htm](http://www.em.gov.bc.ca/Mining/Geolsurv/Minfile/products.htm)

- Producer
- Past Producer
- Developed Prospect
- Prospect
- Showing



**MAP LEGEND**

- Primary Roads
- Secondary Road
- Rail
- Lakes & Streams
- Contours
- Ice
- Provincial Park Land & Reserves
- Indian Reserves

**Disclaimer:** While every effort has been taken to ensure the accuracy of the information in this release package, the data is provided in an "as-is" basis, without any warranty, guarantee or representation of any kind, whether expressed or implied. It is the responsibility of the user to check the facts before entering any financial or other commitment based upon this information.

Considerable effort has been taken to ensure that the data files are free of error. Please contact Geoscience BC if any discrepancies arise.





Report 2010 - 13

QUEST South  
Regional Geochemical Data

SOUTHERN  
BRITISH COLUMBIA

(082E, L, M; 092H, I, J, O & P)



TRANSVERSE MERCATOR PROJECTION  
NORTH AMERICAN DATUM 1983

Aluminum (Al)

Percentile	Concentrations		
	Stream	Lake	Till
MAX	-	-	-
95TH	-	-	-
90TH	-	-	-
70TH	-	-	-
50TH	-	-	-
30TH	-	-	-
MIN	-	-	-

Summary Statistics

Stream Sediments

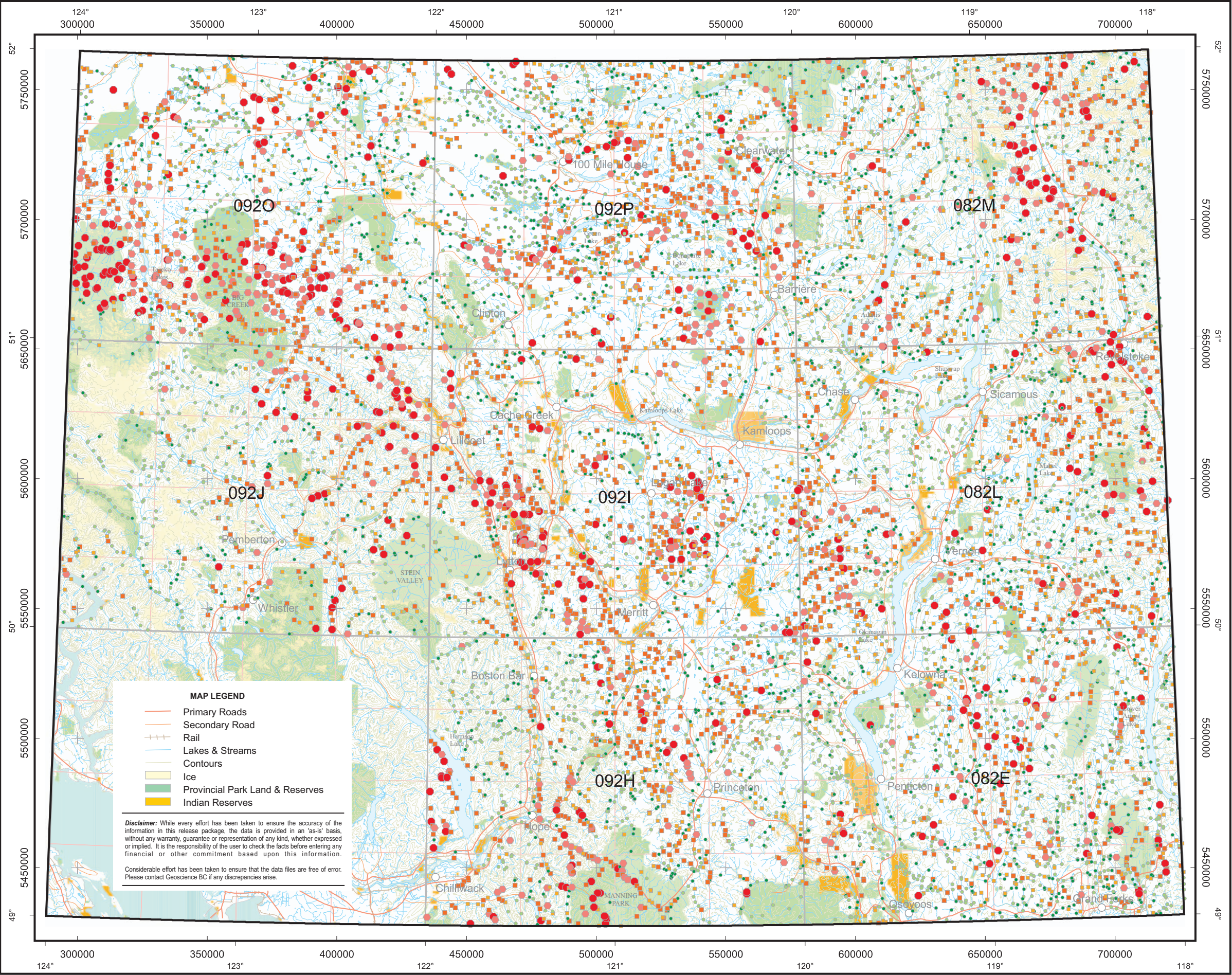
Variable -	Al	Mean -	1.28
Units -	%	Median -	1.16
DL -	0.01	Mode -	1.17
Method -	ICPMS	Range -	9.95
N -	8545	StD -	0.64
N>DL -	8545	CV -	0.502

Lake Sediments

Variable -	Al	Mean -	0.46
Units -	%	Median -	0.29
DL -	0.01	Mode -	0.11
Method -	ICPMS	Range -	3.32
N -	769	StD -	0.49
N>DL -	769	CV -	1.064

Basal Till Samples

Variable -	Al	Mean -	1.73
Units -	%	Median -	1.71
DL -	0.01	Mode -	1.90
Method -	ICPMS	Range -	2.68
N -	190	StD -	0.45
N>DL -	190	CV -	0.263





QUEST South  
Regional Geochemical Data

SOUTHERN  
BRITISH COLUMBIA

(082E, L, M; 092H, I, J, O & P)



TRANSVERSE MERCATOR PROJECTION  
NORTH AMERICAN DATUM 1983

Antimony (Sb)

Percentile	Concentrations		
	Stream	Lake	Till
MAX	-	103.50	4.29
95TH	-	1.03	0.87
90TH	-	0.65	0.72
70TH	-	0.26	0.44
50TH	-	0.14	0.32
30TH	-	0.08	0.24
MIN	-	0.02	0.04

Summary Statistics

Stream Sediments

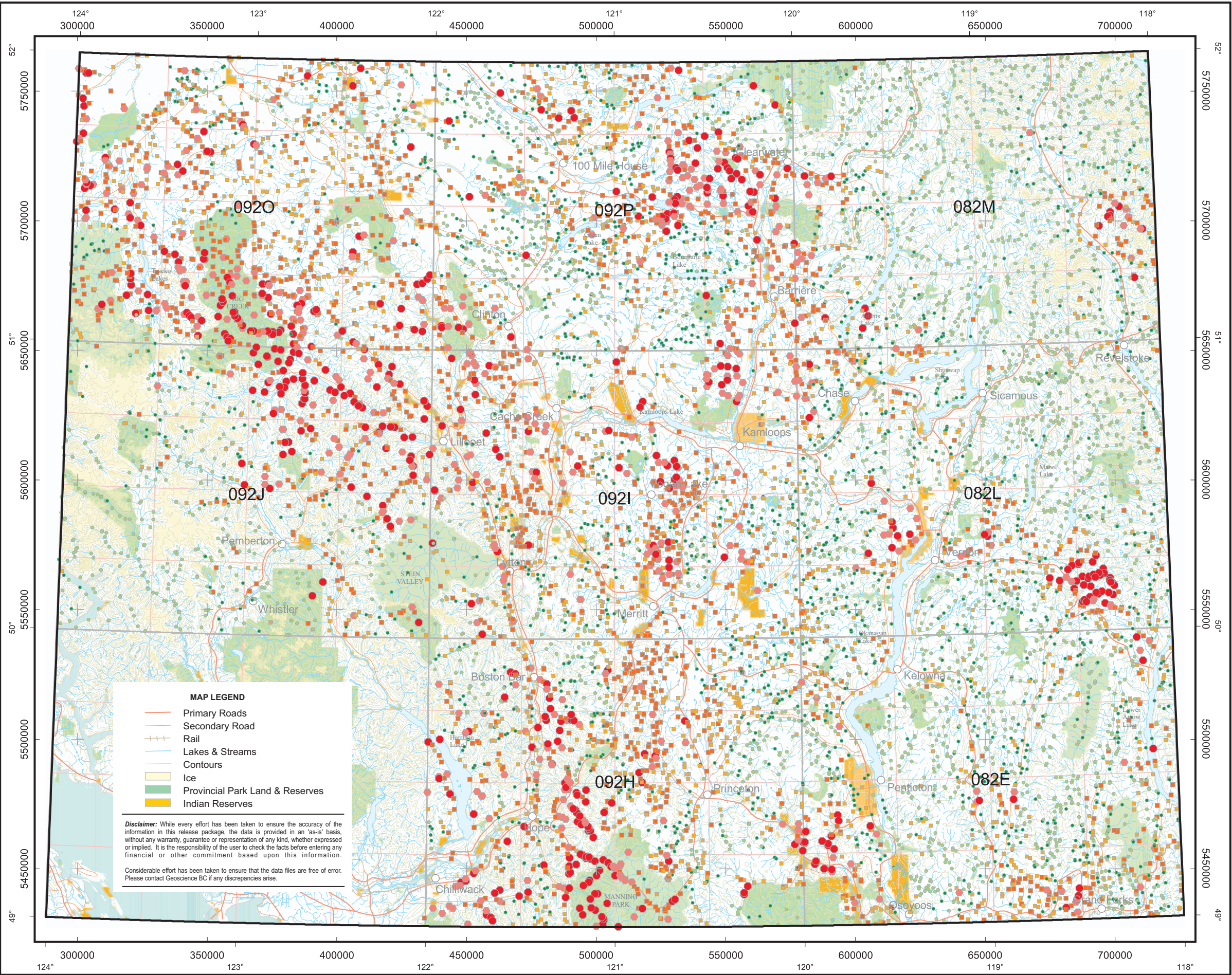
Variable -	Sb	Mean -	0.32
Units -	ppm	Median -	0.14
DL -	0.02	Mode -	0.02
Method -	ICPMS	Range -	103.48
N -	8545	StD -	1.34
N>DL -	7955	CV -	4.160

Lake Sediments

Variable -	Sb	Mean -	0.40
Units -	ppm	Median -	0.32
DL -	0.02	Mode -	0.25
Method -	ICPMS	Range -	4.25
N -	769	StD -	0.34
N>DL -	769	CV -	0.845

Basal Till Samples

Variable -	Sb	Mean -	0.55
Units -	ppm	Median -	0.42
DL -	0.02	Mode -	0.28
Method -	ICPMS	Range -	2.02
N -	190	StD -	0.40
N>DL -	190	CV -	0.715







Report 2010 - 13

QUEST South  
Regional Geochemical Data

SOUTHERN  
BRITISH COLUMBIA

(082E, L, M; 092H, I, J, O & P)



TRANSVERSE MERCATOR PROJECTION  
NORTH AMERICAN DATUM 1983

Arsenic (As)

Percentile	Concentrations		
	Stream	Lake	Till
MAX	-	1515.0	39.0
95TH	-	22.4	6.5
90TH	-	13.0	4.7
70TH	-	4.6	2.2
50TH	-	2.3	1.3
30TH	-	1.2	0.7
MIN	-	0.1	0.1

Summary Statistics

Stream Sediments

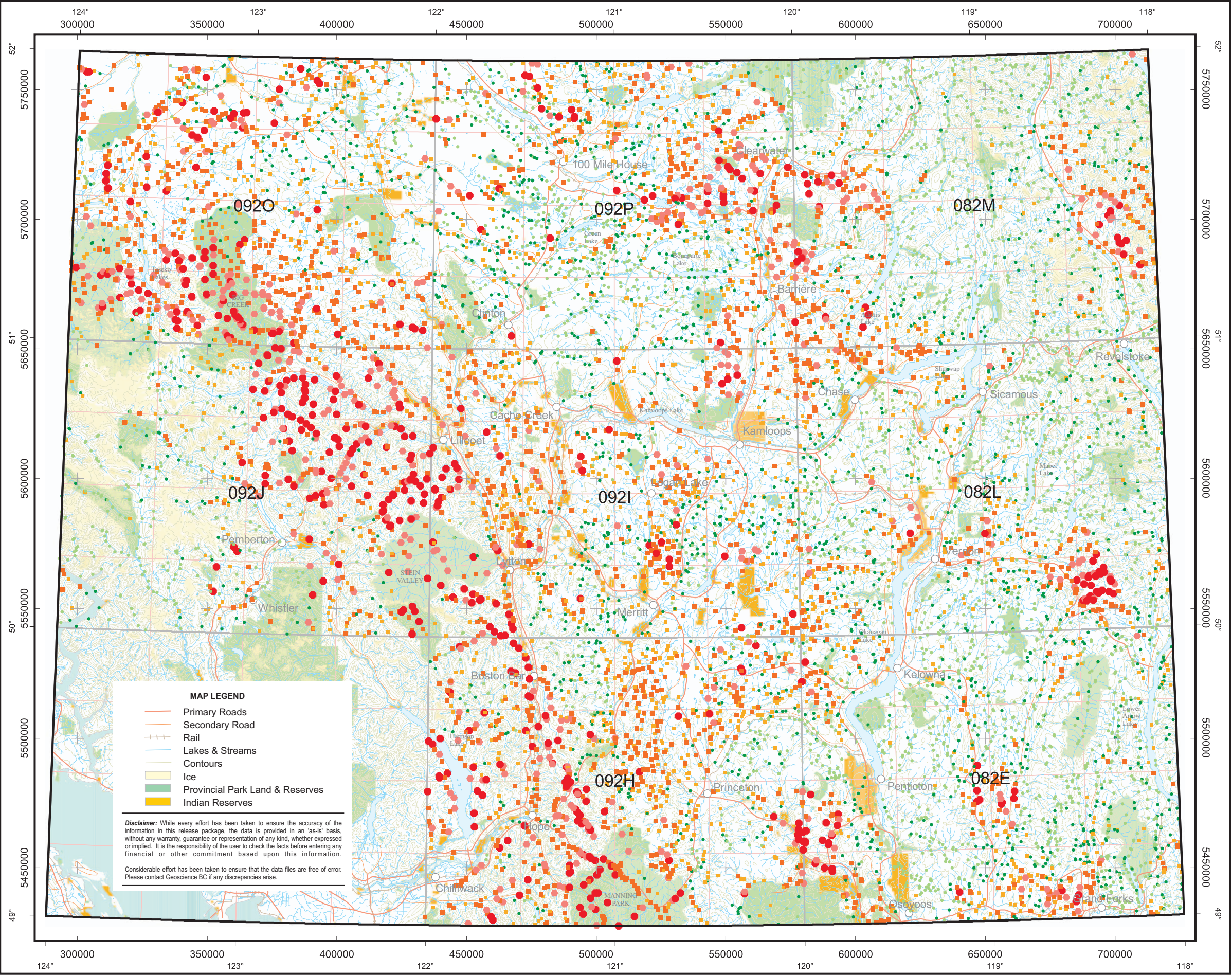
Variable -	As	Mean -	6.54
Units -	ppm	Median -	2.30
DL -	0.1	Mode -	0.60
Method -	ICPMS	Range -	1514.9
N -	8545	StD -	23.72
N>DL -	8425	CV -	3.625

Lake Sediments

Variable -	As	Mean -	2.09
Units -	ppm	Median -	1.30
DL -	0.1	Mode -	0.10
Method -	ICPMS	Range -	38.9
N -	769	StD -	2.68
N>DL -	722	CV -	1.279

Basal Till Samples

Variable -	As	Mean -	6.23
Units -	ppm	Median -	5.20
DL -	0.1	Mode -	1.60
Method -	ICPMS	Range -	29.6
N -	190	StD -	4.04
N>DL -	190	CV -	0.649





QUEST South  
Regional Geochemical Data

SOUTHERN  
BRITISH COLUMBIA

(082E, L, M; 092H, I, J, O & P)



TRANSVERSE MERCATOR PROJECTION  
NORTH AMERICAN DATUM 1983

Barium (Ba)

Percentile		Concentrations		
		Stream	Lake	Till
MAX	-	1263.0	529.5	494.5
95TH	-	253.0	153.1	300.0
90TH	-	203.0	129.4	276.0
70TH	-	126.5	89.5	219.5
50TH	-	93.3	62.1	186.5
30TH	-	69.2	43.2	150.5
MIN	-	5.3	8.6	50.5

Summary Statistics

Stream Sediments

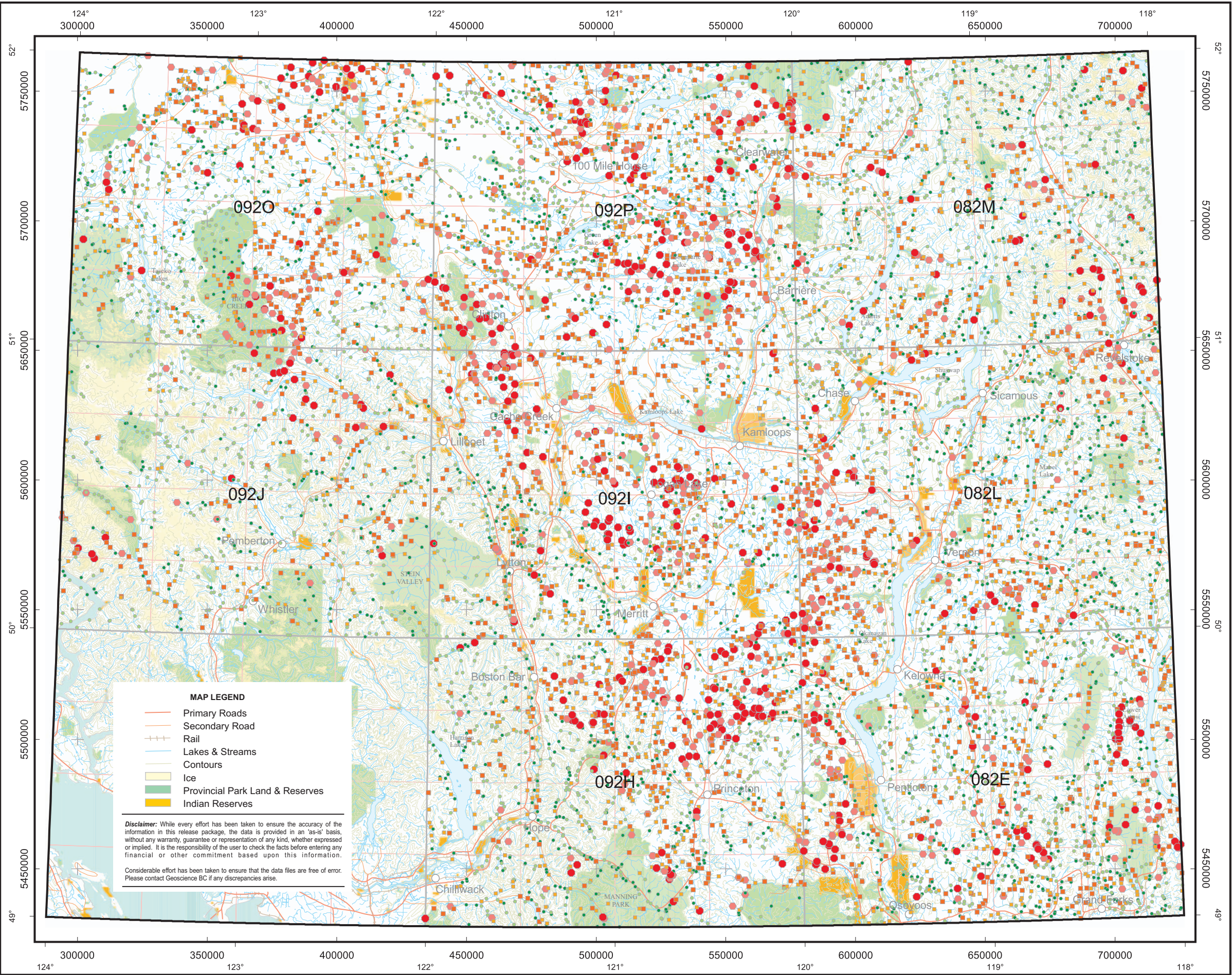
Variable -	Ba	Mean -	113.51
Units -	ppm	Median -	93.30
DL -	0.5	Mode -	107.50
Method -	ICPMS	Range -	1257.7
N -	8545	StD -	83.23
N>DL -	8545	CV -	0.733

Lake Sediments

Variable -	Ba	Mean -	72.70
Units -	ppm	Median -	62.10
DL -	0.5	Mode -	31.00
Method -	ICPMS	Range -	520.9
N -	769	StD -	45.31
N>DL -	769	CV -	0.623

Basal Till Samples

Variable -	Ba	Mean -	190.67
Units -	ppm	Median -	186.50
DL -	0.5	Mode -	152.50
Method -	ICPMS	Range -	444.0
N -	190	StD -	69.59
N>DL -	190	CV -	0.365



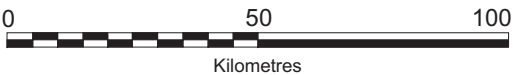




Report 2010 - 13

QUEST South  
Regional Geochemical Data

SOUTHERN  
BRITISH COLUMBIA  
(082E, L, M; 092H, I, J, O & P)



TRANSVERSE MERCATOR PROJECTION  
NORTH AMERICAN DATUM 1983

Bismuth (Bi)

Percentile	Concentrations		
	Stream	Lake	Till
MAX	-	34.18	0.29
95TH	-	0.39	0.09
90TH	-	0.27	0.07
70TH	-	0.14	0.04
50TH	-	0.09	0.03
30TH	-	0.06	0.02
MIN	-	0.01	0.02

Summary Statistics

Stream Sediments

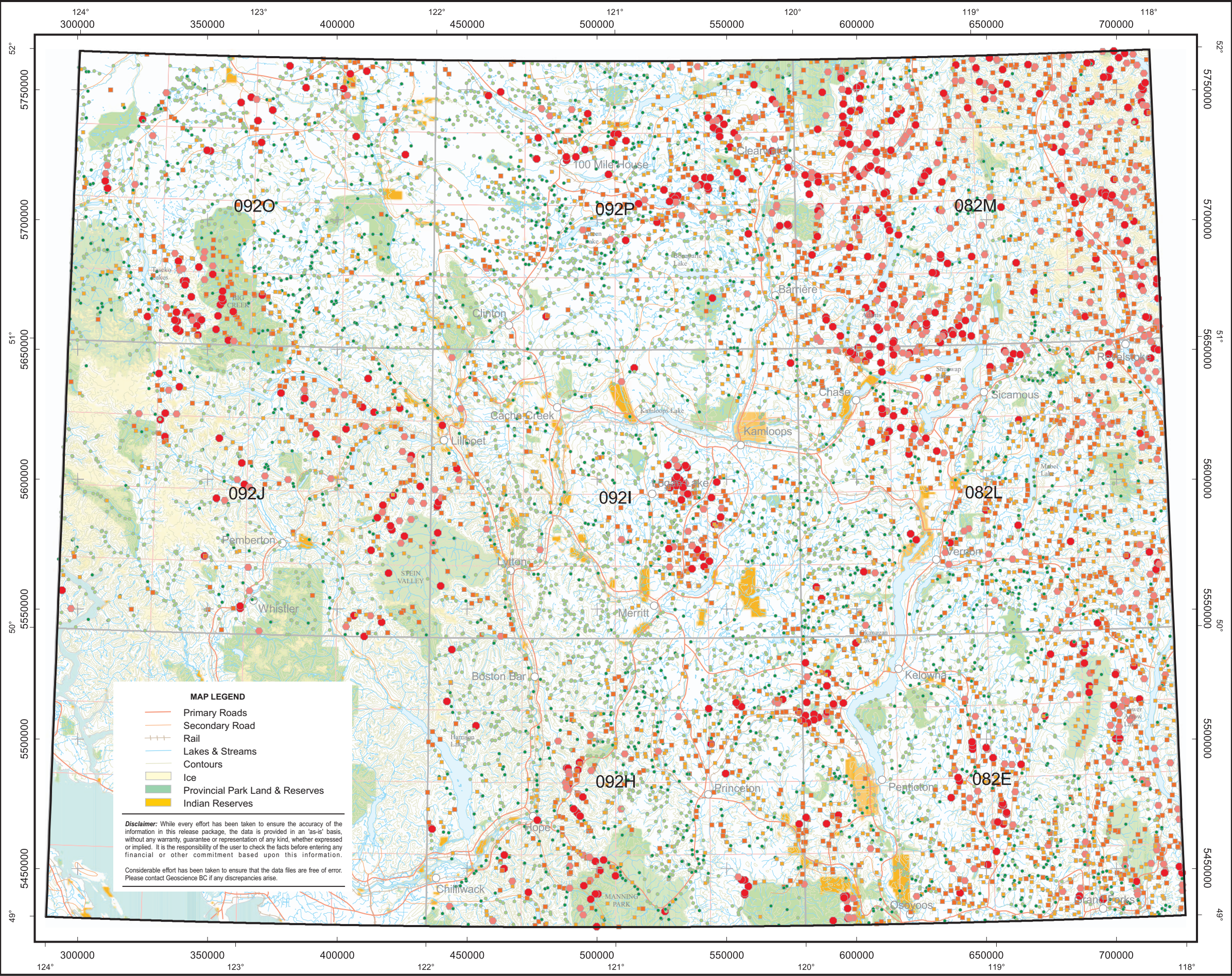
Variable -	Bi	Mean -	0.15
Units -	ppm	Median -	0.09
DL -	0.01	Mode -	0.06
Method -	ICPMS	Range -	34.17
N -	8545	StD -	0.48
N>DL -	8420	CV -	3.111

Lake Sediments

Variable -	Bi	Mean -	0.04
Units -	ppm	Median -	0.03
DL -	0.01	Mode -	0.02
Method -	ICPMS	Range -	0.27
N -	769	StD -	0.02
N>DL -	769	CV -	0.697

Basal Till Samples

Variable -	Bi	Mean -	0.16
Units -	ppm	Median -	0.10
DL -	0.01	Mode -	0.08
Method -	ICPMS	Range -	2.48
N -	190	StD -	0.23
N>DL -	190	CV -	1.399







Report 2010 - 13

QUEST South  
Regional Geochemical Data

SOUTHERN  
BRITISH COLUMBIA

(082E, L, M; 092H, I, J, O & P)



TRANSVERSE MERCATOR PROJECTION  
NORTH AMERICAN DATUM 1983

Cadmium (Cd)

Percentile	Concentrations		
	Stream	Lake	Till
MAX	-	29.80	1.29
95TH	-	0.81	0.35
90TH	-	0.49	0.28
70TH	-	0.19	0.16
50TH	-	0.12	0.10
30TH	-	0.07	0.07
MIN	-	0.01	0.01

Summary Statistics

Stream Sediments

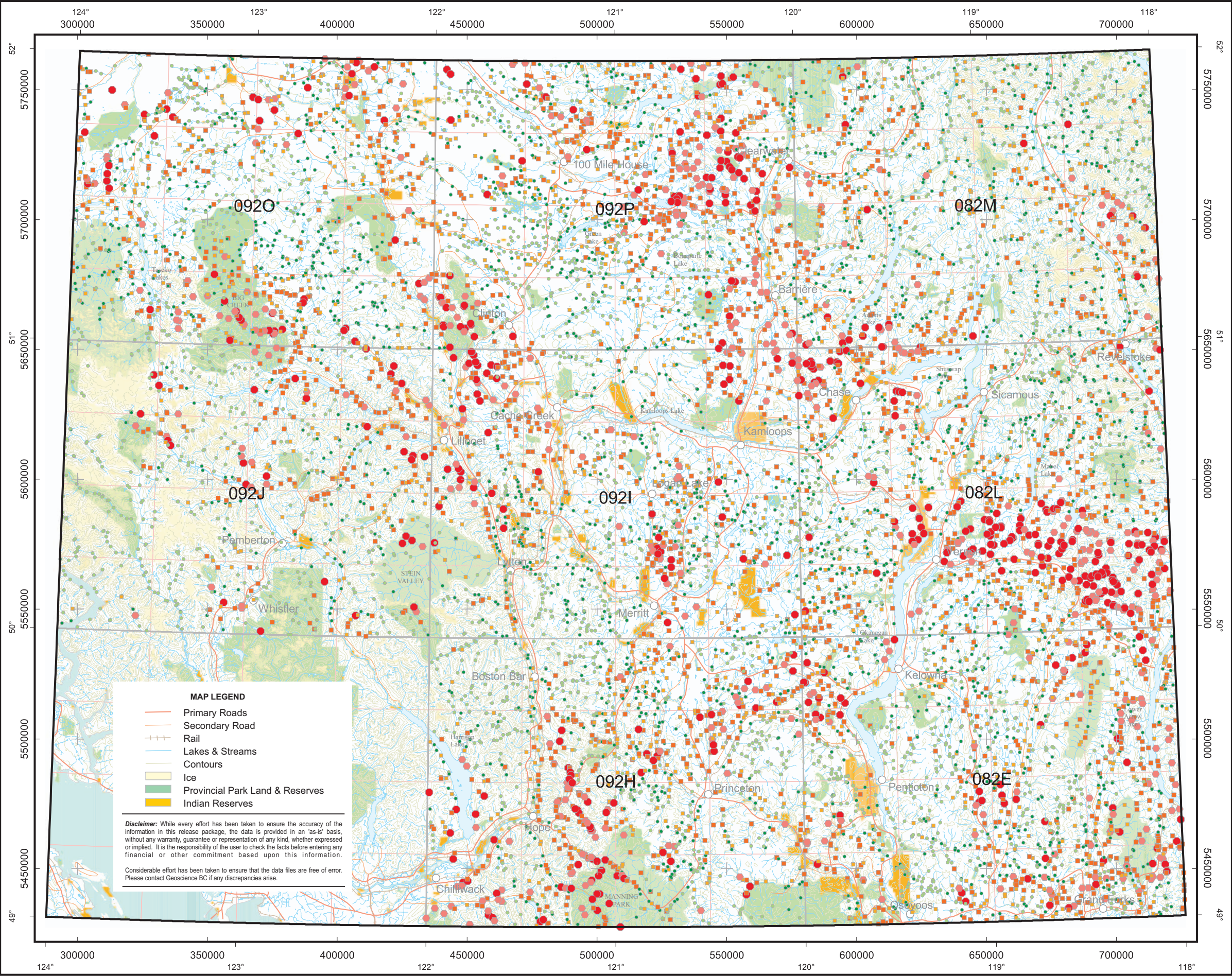
Variable -	Cd	Mean -	0.24
Units -	ppm	Median -	0.12
DL -	0.01	Mode -	0.07
Method -	ICPMS	Range -	29.79
N -	8545	StD -	0.60
N>DL -	8417	CV -	2.454

Lake Sediments

Variable -	Cd	Mean -	0.14
Units -	ppm	Median -	0.10
DL -	0.01	Mode -	0.05
Method -	ICPMS	Range -	1.28
N -	769	StD -	0.13
N>DL -	759	CV -	0.922

Basal Till Samples

Variable -	Cd	Mean -	0.15
Units -	ppm	Median -	0.13
DL -	0.01	Mode -	0.11
Method -	ICPMS	Range -	0.77
N -	190	StD -	0.11
N>DL -	190	CV -	0.748





QUEST South  
Regional Geochemical Data

SOUTHERN  
BRITISH COLUMBIA

(082E, L, M; 092H, I, J, O & P)



TRANSVERSE MERCATOR PROJECTION  
NORTH AMERICAN DATUM 1983

Calcium (Ca)

Percentile	Concentrations		
	Stream	Lake	Till
MAX	30.70	29.60	7.85
95TH	3.94	20.57	5.34
90TH	2.03	18.52	4.26
70TH	0.91	12.19	2.53
50TH	0.65	7.96	1.52
30TH	0.48	4.24	0.99
MIN	0.05	0.33	0.38

Summary Statistics

Stream Sediments

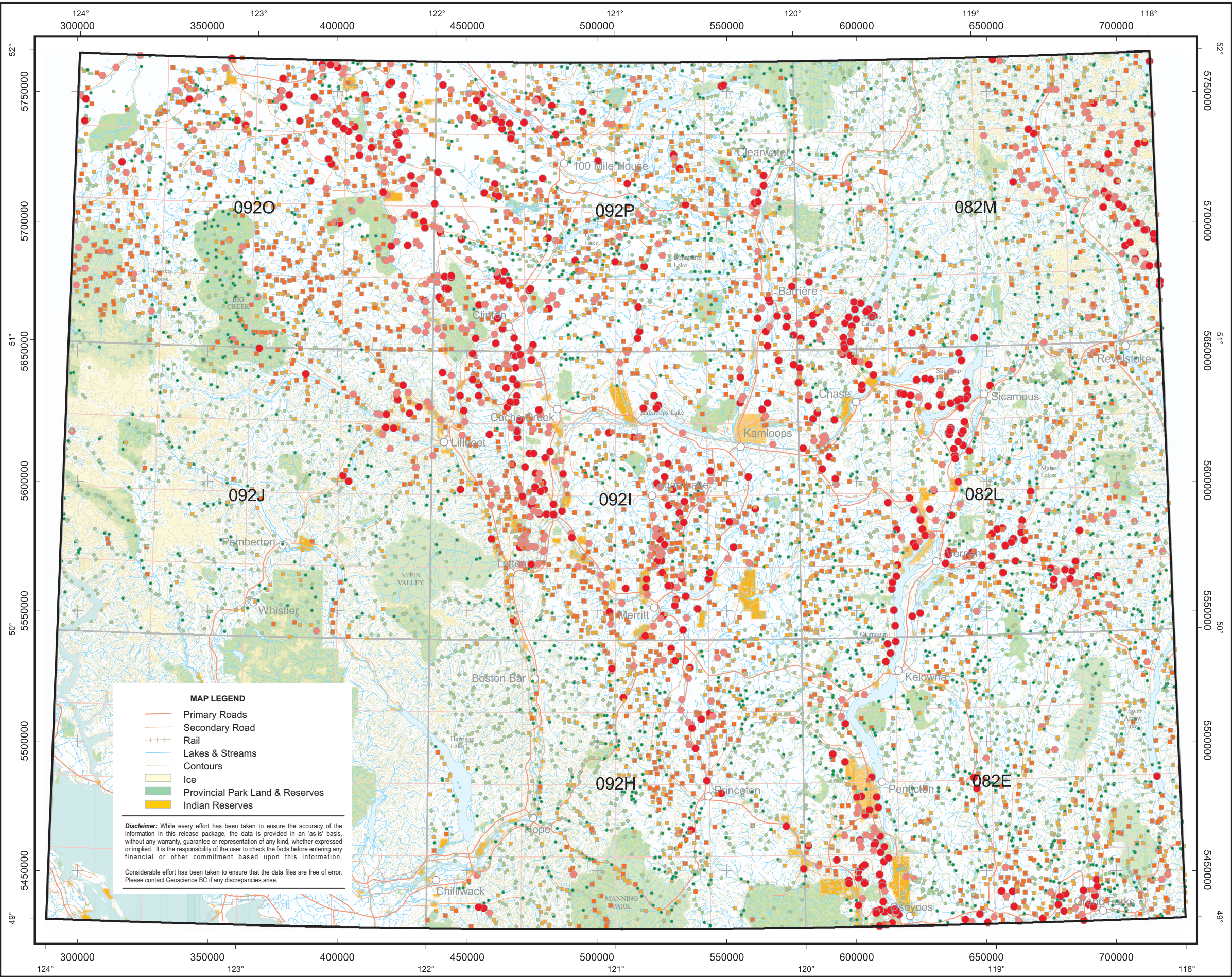
Variable -	Ca	Mean -	1.30
Units -	%	Median -	0.65
DL -	0.01	Mode -	0.41
Method -	ICPMS	Range -	30.65
N -	8545	StD -	2.72
N>DL -	8545	CV -	2.094

Lake Sediments

Variable -	Ca	Mean -	8.84
Units -	%	Median -	7.96
DL -	0.01	Mode -	0.68
Method -	ICPMS	Range -	29.27
N -	769	StD -	6.53
N>DL -	769	CV -	0.738

Basal Till Samples

Variable -	Ca	Mean -	2.05
Units -	%	Median -	1.52
DL -	0.01	Mode -	0.79
Method -	ICPMS	Range -	7.47
N -	190	StD -	1.49
N>DL -	190	CV -	0.728







Report 2010 - 13

QUEST South  
Regional Geochemical Data

SOUTHERN  
BRITISH COLUMBIA  
(082E, L, M; 092H, I, J, O & P)



TRANSVERSE MERCATOR PROJECTION  
NORTH AMERICAN DATUM 1983

Chromium (Cr)

Percentile		Concentrations		
		Stream	Lake	Till
MAX	-	960.0	917.8	279.5
95TH	-	85.5	46.4	77.0
90TH	-	60.1	34.3	67.5
70TH	-	36.8	16.4	53.0
50TH	-	26.6	10.7	46.0
30TH	-	18.0	6.9	38.5
MIN	-	0.5	0.9	10.0

Summary Statistics

Stream Sediments

Variable -	Cr	Mean -	35.87
Units -	ppm	Median -	26.60
DL -	0.5	Mode -	11.50
Method -	ICPMS	Range -	959.5
N -	8545	StD -	49.41
N>DL -	8543	CV -	1.378

Lake Sediments

Variable -	Cr	Mean -	17.68
Units -	ppm	Median -	10.70
DL -	0.5	Mode -	4.20
Method -	ICPMS	Range -	916.9
N -	769	StD -	39.43
N>DL -	769	CV -	2.231

Basal Till Samples

Variable -	Cr	Mean -	49.17
Units -	ppm	Median -	46.00
DL -	0.5	Mode -	34.50
Method -	ICPMS	Range -	269.5
N -	190	StD -	27.35
N>DL -	190	CV -	0.556

