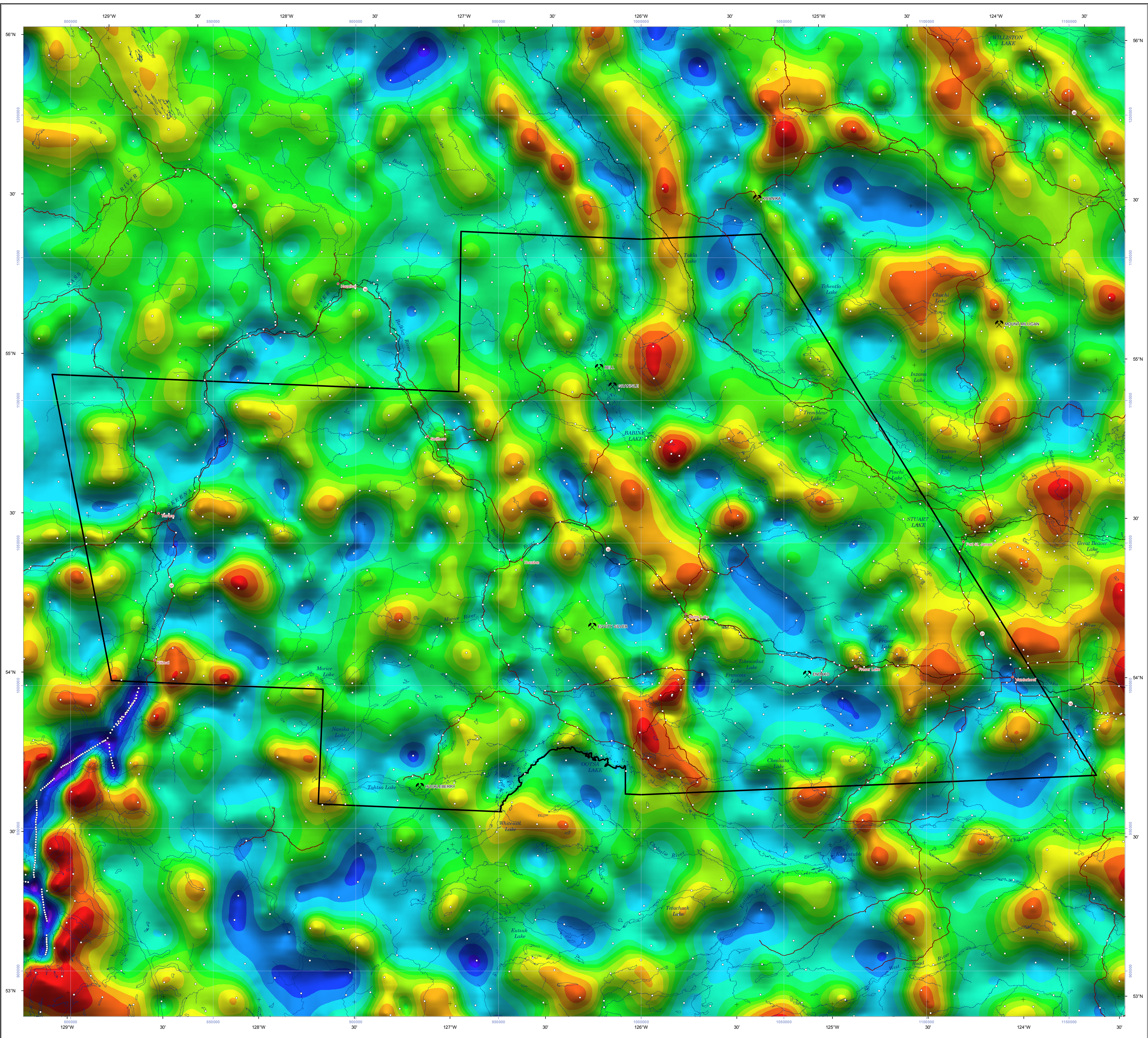


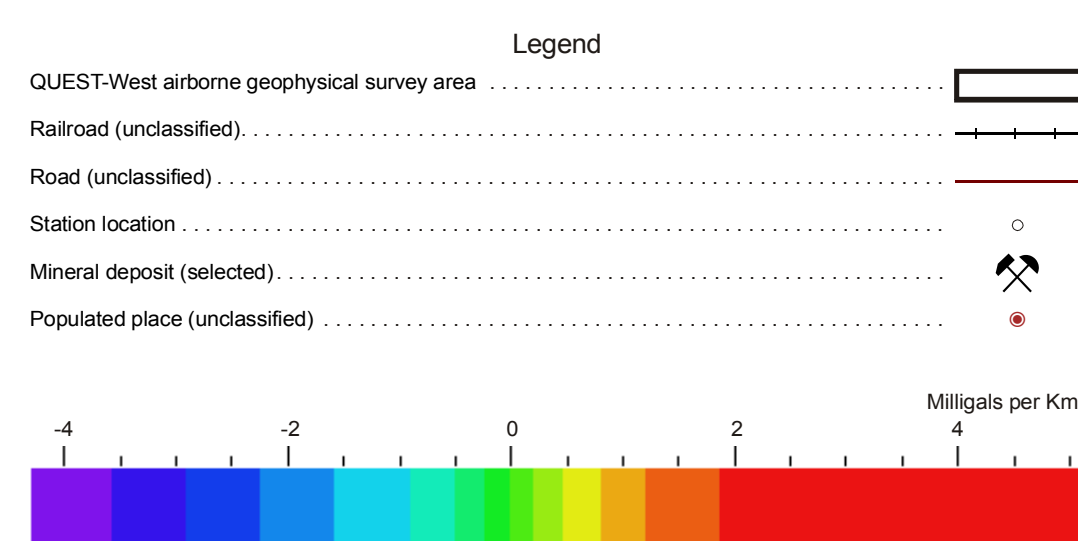
Disclaimer: While every effort has been taken to ensure the accuracy of the information in this map, the data are provided on an "as-is" basis, without any warranty, guarantee or representation of any kind, whether expressed or implied. It is the responsibility of the user to check the facts before entering any financial or other commitment based upon this information.

1:500 000 NRCAN GRAVITY - FIRST VERTICAL DERIVATIVE



National Topographic Sheet Index

104A BOWSER LAKE	094D MCCONNELL CREEK	094C MUSKOKA RIVER	094B HALFWAY RIVER
103P PASS RIVER	093M HAZELTON	093N MANSION RIVER	093O PINE PASS
103I TERRACE	093L SMITHERS	093K FOX FRASER	093J MILLICO LAKE
103H DOUGLAS CHANNEL	093E WHITESMITH LAKE	093F MICHIGAN RIVER	093G PRINCE GEORGE
103A LAKESOUND	093D BELLA COOLA	093C ANAMIM LAKE	093B QUESNEL



* The geophysical data on this map is from Natural Resources Canada (NRCAN) and has been cartographically prepared by Geoscience BC as part of a suite of maps for the QUEST-West Project.

Mineral Deposit Data
MINFILE (2010); MINFILE B.C. mineral deposits database; B.C. Ministry of Energy, Mines and Petroleum Resources, URL: <http://minfile.ca> (September 2010).

Gravity Data
Natural Resources Canada (2009); Canadian Geodetic Information System; Geoscience Data Repository, Geodetic Survey Division, Earth Sciences Sector, Natural Resources Canada, Government of Canada, URL: <http://minfile.nrcan.gc.ca/gravity/index_e.php> (January 2009).

Topographic Data
Massey, N.W.D., MacIntyre, D.G., Desjardins, P.J. and Cooney, R.T. (2005); Digital Geology Map of British Columbia: White Province; B.C. Ministry of Energy and Mines, Geofiles 2005-1, URL: <http://www.miner.geosciencebc.ca/Miner/GeosciencePublicationsCatalogue/Geofiles/2005-1.aspx> (November 2007).

Acknowledgments
Cartography by Stephen P. Williams and Fionn Ma, Geoscience BC
Image processing by BW Mining, Boulder, Colorado - www.bwmining.com
Geoscience BC is funded through grants from the Provincial Government of British Columbia.
QUEST-West is funded in partnership with the Northern Development Initiative Trust - www.nditrust.ca and the Regional District of Bulkley-Nechako - www.rdnbc.ca

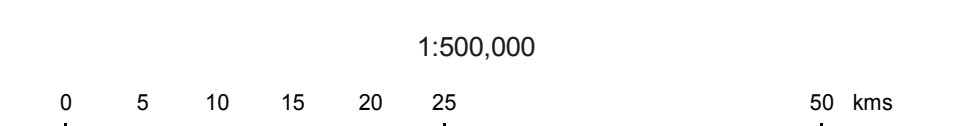


Geoscience BC is an industry-led, industry-focused not for profit society that works to attract mineral and oil and gas investment to British Columbia through collection and marketing of geoscience data.

www.geosciencebc.com

MAP 2010-12-9

NRCAN GRAVITY - FIRST VERTICAL DERIVATIVE
QUEST-WEST PROJECT
NTS SHEETS 93E,F,K,L,M,N
PART OF NTS SHEETS 93B,C,D,G,J,O; 94B,C,D; 103A,H,I,P; 104A



Albers Projection, Central Meridian 126° W, Latitude of origin 45° N, First standard parallel 50° N, Second standard parallel 58.5° N, False easting 1,000,000, North American Datum 1983
Mean magnetic declination 2010, 19°46' E, decreasing 15.7' annually. Readings vary from 18°45' E in the southeast corner to 20°36' E in the northwest corner of the map.
December 2010

Citation:
Geoscience BC (2010); QUEST-West Project - NRCAN Gravity - First Vertical Derivative; Geoscience BC, Map 2010-12-9; Scale 1:500,000.