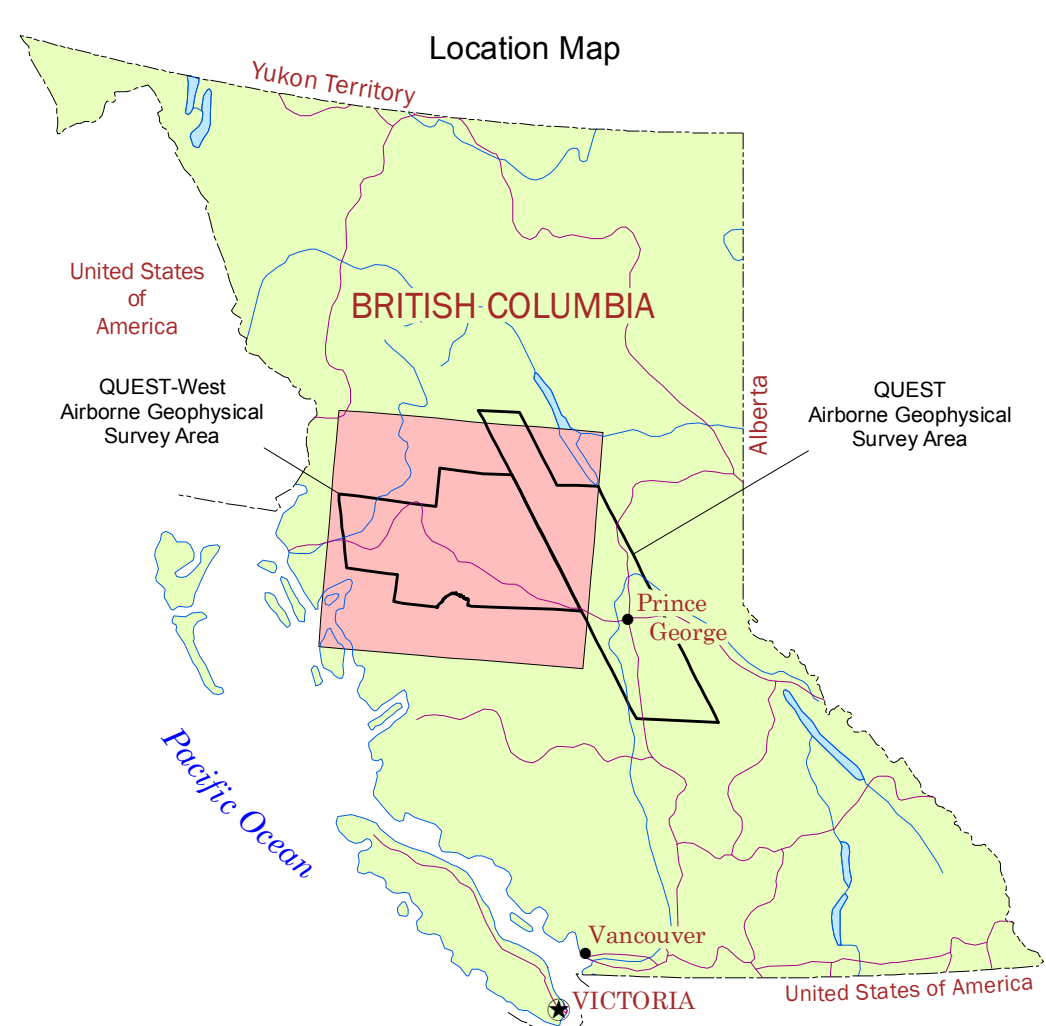
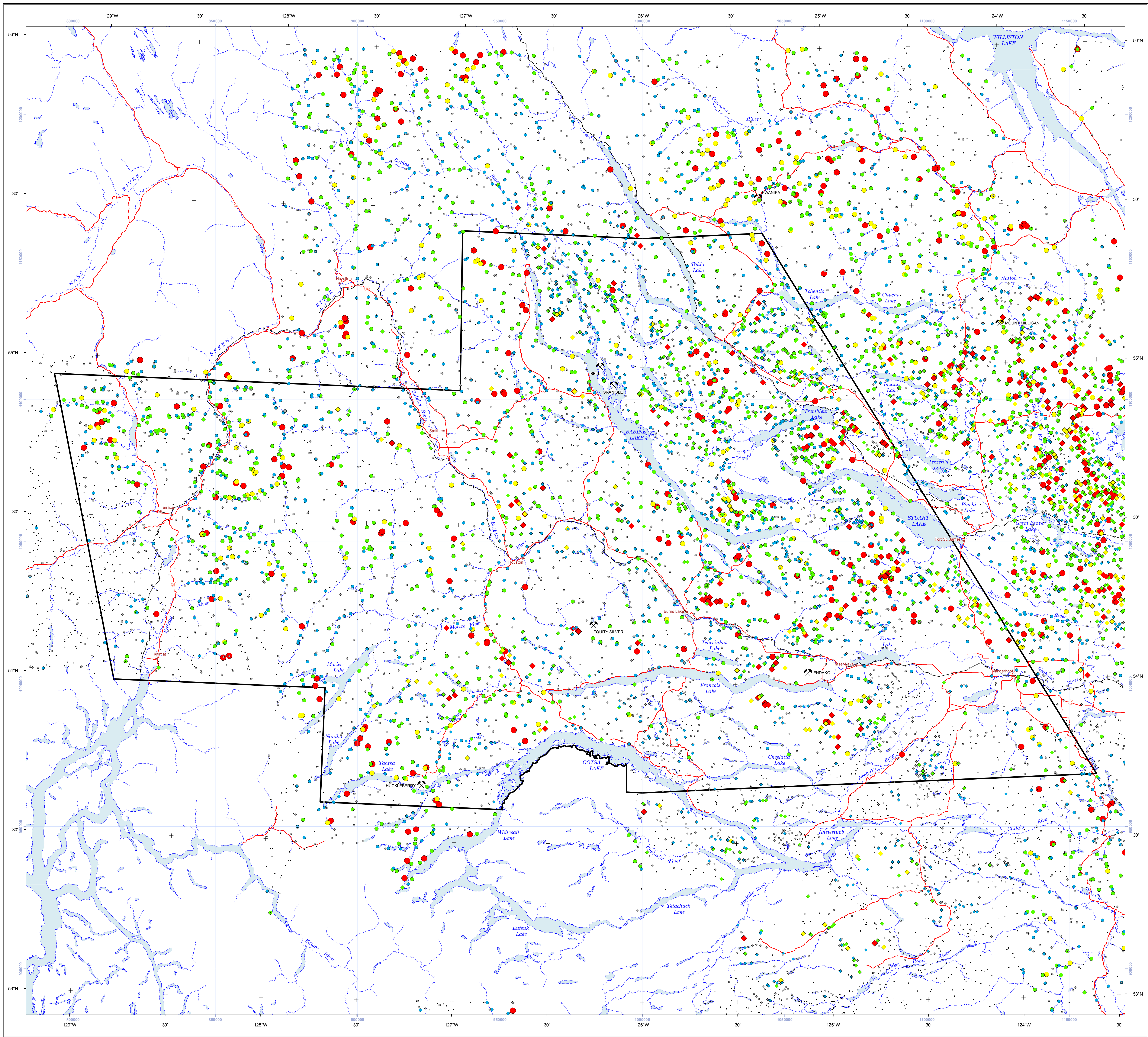


Disclaimer: While every effort has been taken to ensure the accuracy of the information in this map, the data are provided on an "as is" basis, without any warranty, guarantee or representation of any kind, whether expressed or implied. It is the responsibility of the user to check the facts before entering any financial or other commitment based upon this information.

1:500 000 LAKE AND STREAM SEDIMENT GEOCHEMISTRY - SILVER



National Topographic Sheet Index

104A DOWDER LAKE	094D MCCONNELL CREEK	094C MELNIWA RIVER	094B HALFRAY RIVER
103P NASS RIVER	093M HAMILTON	093N MANSON RIVER	093O PINE PINE
103I TERRACE	093L SMITHERS	093K FORT FRASER	093J NICOLO LAKE
103H DOUGLASS CHANNEL	093E WHITESAIL LAKE	093I NICHOKO RIVER	093G PROVOC GEORGE
103A LAREDO SOUND	093D BELLA COOLA	093C ANAHM LAKE	093B QUEENSLAND

Legend

QUEST-West airborne geophysical survey area	[Dotted line]
Railroad (undesignated)	[Dashed line]
Road (undesignated)	[Thin solid line]
Mineral deposit (selected)	[Red diamond]
Populated place (undesignated)	[Black dot]

Stream Sediment Geochemistry Silver (CP-MS)		Lake Sediment Geochemistry Silver (CP-MS)	
Concentration (ppb)	Percentile	Concentration (ppb)	Percentile
< 50	< 25th	< 124	< 25th
50 - 84	50th	124 - 221	50th
84 - 129	70th	221 - 339	70th
129 - 255	90th	339 - 542.4	90th
255 - 355.5	95th	542.4 - 677.8	95th
> 355.5	> 95th	> 677.8	> 95th

**Acknowledgments**  
Cartography by Stephen P. Williams and Flon Ma, Geoscience BC.  
Geoscience BC is funded through grants from the Provincial Government of British Columbia.  
QUEST-West is funded in partnership with the Northern Development Initiative Trust - www.nditrust.ca and the Regional District of Bulkley-Nechako - www.rdn.bc.ca

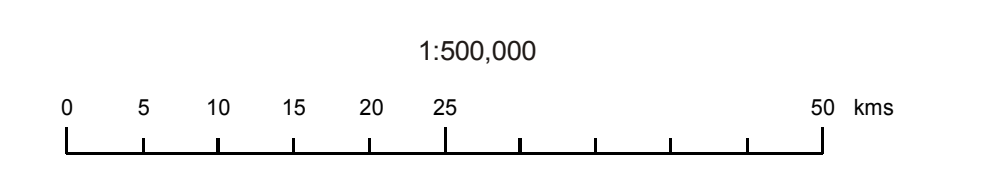


**Geochemistry Data**  
QUEST-West data  
Jackman, W. (2009). Regional drainage sediment and water geochemical data, central British Columbia (parts of NTS 93E, F, G, J, K, L, M, N & O). Geoscience BC, Report 2009-11, 347 p., URL <http://www.geosciencebc.com/2009-11.asp> (May 2009).  
Jackman, W. (2009). QUEST-West Project sample reanalysis. Geoscience BC, Report 2009-5, 4 p., URL <http://www.geosciencebc.com/2009-05.asp> (January 2009).  
Other data included on this map  
Jackman, W. (2008). Regional stream sediment and water geochemical data: Terrace & Prince Rupert (NTS 103 & 103J). British Columbia: Geoscience BC, Report 2008-11, 347 p., URL <http://www.geosciencebc.com/2008-11.asp> (December 2008).  
Jackman, W. (2008). Regional stream sediment and water geochemical data: Pine Pass, British Columbia (NTS 93O). Geoscience BC, Report 2008-7, 262 p., URL <http://www.geosciencebc.com/2008-07.asp> (May 2008).  
Jackman, W. (2008). Regional lake sediment and water geochemical data, northern Fraser Basin, central British Columbia (parts of NTS 93G, H, J, K, M & O). Geoscience BC, Report 2008-5, 448 p., URL <http://www.geosciencebc.com/2008-05.asp> (April 2008).  
Jackman, W. (2008). QUEST Project sample reanalysis. Geoscience BC, Report 2008-3, 4 p., URL <http://www.geosciencebc.com/2008-03.asp> (January 2008).  
Lett, R.E.W. and Blumel, B. (2006). Re-analysis of regional geochemical survey stream sediment samples from the McLeod Lake area (NTS map sheet 093J). BC Ministry of Energy, Mines and Petroleum Resources, Geofiles 2006-09, 20 pp., URL <http://www.empr.gov.bc.ca/Mining/Geoscience/Publications/Catalogue/GeoFiles/Pages/2006-09.asp> (August 2009).  
Jackman, W. (2006). Regional drainage sediment and water geochemical data, Anahim Lake and Nechako River, central British Columbia (NTS 93C & 93F). Geoscience BC, Report 2006-4, 463 p., URL <http://www.geosciencebc.com/2006-04.asp> (January 2006).  
Lett, R.E.W. (2005). Regional Geochemical Survey Database on CD. BC Ministry of Energy, Mines and Petroleum Resources, Geofiles 2005-17, URL <http://www.empr.gov.bc.ca/Mining/Geoscience/Publications/Catalogue/GeoFiles/Pages/2005-17.asp> (August 2009).

**Mineral Deposit Data**  
MINFILE (2010). MINFILE B.C. mineral deposits database. B.C. Ministry of Energy, Mines and Petroleum Resources, URL <http://minfile.ca> (September 2010).  
**Topographic Data**  
Massey, N.W.D., MacInyre, D.G., Desjardins, P.J. and Cooney, R.T. (2005). Digital Geology Map of British Columbia: Whole Province; B.C. Ministry of Energy and Mines, Geofiles 2005-1, URL <http://www.empr.gov.bc.ca/Mining/Geoscience/Publications/Catalogue/GeoFiles/Pages/2005-1.asp> (November 2007).



LAKE AND STREAM SEDIMENT GEOCHEMISTRY - SILVER  
**QUEST-WEST PROJECT**  
NTS SHEETS 93E, F, K, L, M, N  
PART OF NTS SHEETS 93B, C, D, G, J, O; 94B, C, D; 103A, H, I, P; 104A



Albers Projection, Central Meridian 126° W, Latitude of origin 45° N, First standard parallel 50° N, Second standard parallel 58° 5' N, False easting 1,000,000, North American Datum 1983  
Mean magnetic declination 2010, 19° 46' E, decreasing 15.7" annually. Readings vary from 19° 45' E in the southeast corner to 20° 36' E in the northwest corner of the map.

December 2010  
Citation:  
Geoscience BC (2010). QUEST-West Project - Lake and Stream Sediment Geochemistry - Silver. Geoscience BC, Map 2010-12-18, scale 1:500,000.