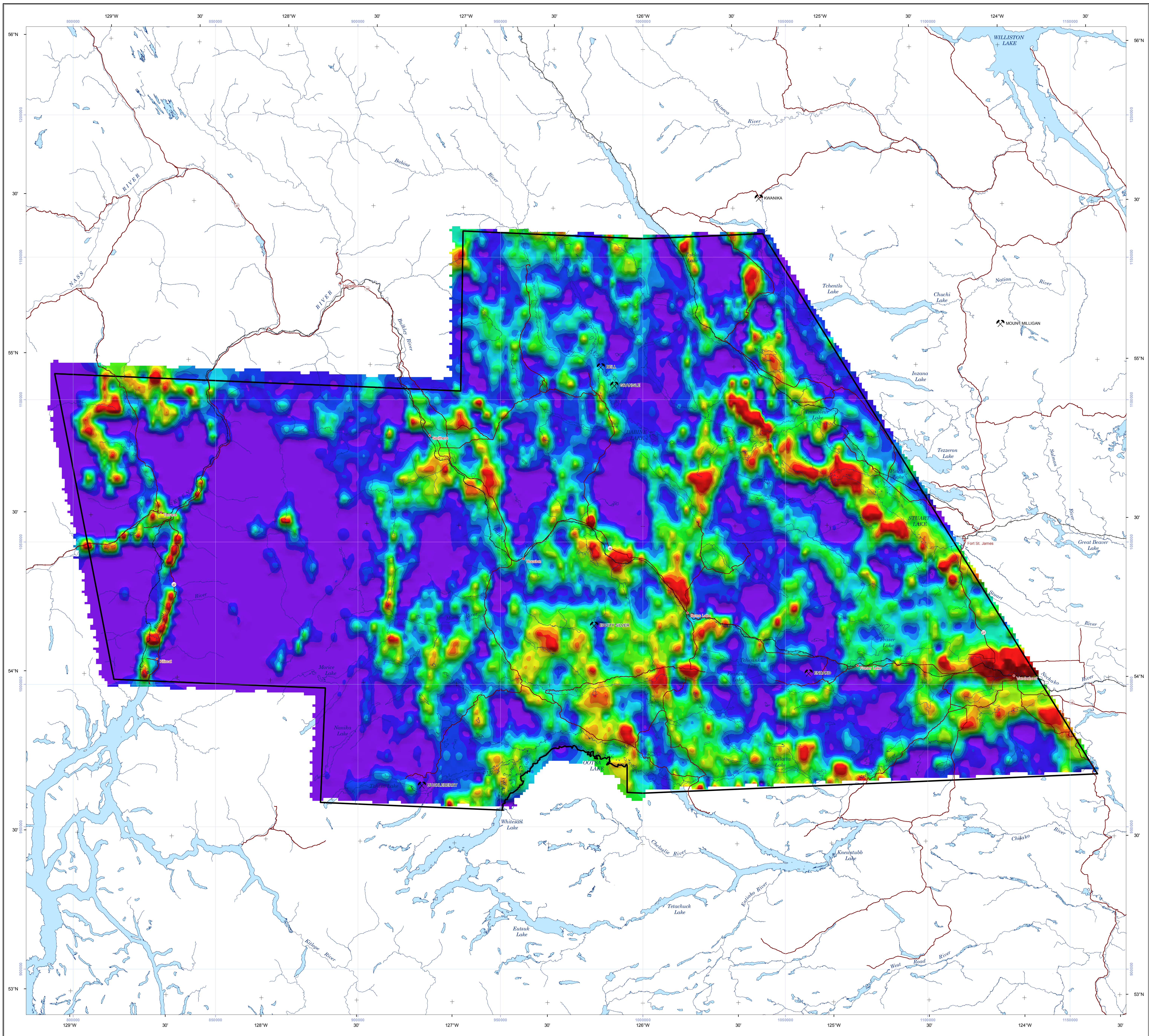


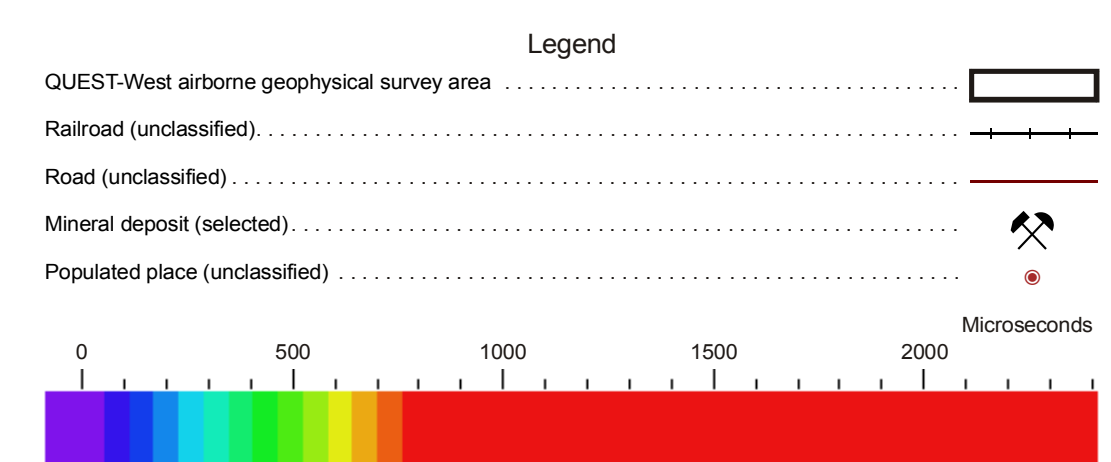
Disclaimer: While every effort has been taken to ensure the accuracy of the information in this map, the data are provided on an "as-is" basis, without any warranty, guarantee or representation of any kind, whether expressed or implied. It is the responsibility of the user to check the facts before entering any financial or other commitment based upon this information.

1:500 000 AeroTEM - TIME CONSTANT TAU



National Topographic Sheet Index

104A BOWSER LAKE	094D MCCONNELL CREEK	094C MISILINKA RIVER	094B HALFWAY RIVER
103P PASS RIVER	093M HAZELTON	093N MANSION RIVER	093O PINE PASS
103I TERRACE	093L SMITHERS	093K FOOT FRASER	093J MILLICO LAKE
103H DOUGLAS CHANNEL	093E WHITESIL LAKE	093F MICHUKO RIVER	093G PRINCE GEORGE
103A LAKEO SOUND	093D BELLA COOLA	093C ANANIM LAKE	093B QUESNEL



Mineral Deposit Data
MINFILE (2010). MINFILE B.C. mineral deposits database. B.C. Ministry of Energy, Mines and Petroleum Resources. URL <http://minfile.ca> [September 2010].

AerTEM Data
Aerquest Surveys (2009). Report on a helicopter-borne AeroTEM system electromagnetic & magnetic survey. Geoscience BC, Report 2009-6, 28 p. URL <http://www.geosciencebc.com/2009-06.asp> [January 2009].

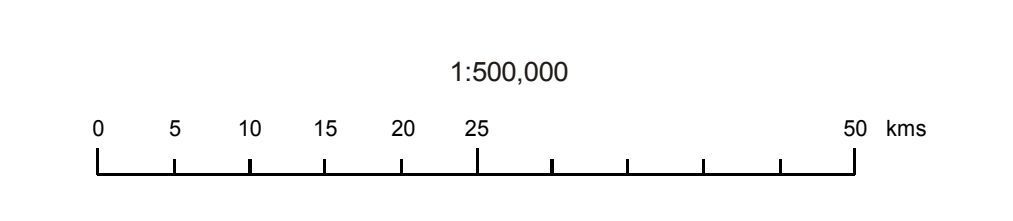
Topographic Data
Massey, N.W.D., MacIntyre, D.G., Desjardins, P.J. and Cooney, R.T. (2005). Digital Geology Map of British Columbia: Whole Province. B.C. Ministry of Energy and Mines, Geofiles 2005-1, URL <http://www.empr.gov.bc.ca/Mining/Geoscience/Publications/Catalogue/Geofiles/Pages/2005-1.aspx> [November 2007].

Acknowledgments
Cartography by Stephen P. Williams and Fion Ma, Geoscience BC
Image processing by BW Mining, Boulder, Colorado - www.bwmining.com
Geoscience BC is funded through grants from the Provincial Government of British Columbia.
QUEST-West is funded in partnership with the Northern Development Initiative Trust - www.nditrust.ca and the Regional District of Bulkley-Nechako - www.ndbhn.bc.ca



Geoscience BC is an industry-led, industry-focused not for profit society that works to attract mineral and oil and gas investment to British Columbia through collection and marketing of geoscience data.
www.geosciencebc.com

MAP 2010-12-14
AerTEM - TIME CONSTANT TAU
QUEST-WEST PROJECT
NTS SHEETS 93E,F,K,L,M,N
PART OF NTS SHEETS 93B,C,D,G,J,O; 94B,C,D; 103A,H,I,P; 104A



Albers Projection, Central Meridian 126° W, Latitude of origin 45° N, First standard parallel 50° N, Second standard parallel 58.5° N, False easting 1,000,000; North American Datum 1983
Mean magnetic declination 2010, 19°48' E, decreasing 15.7' annually. Readings vary from 18°45' E in the southeast corner to 20°36' E in the northwest corner of the map.
December 2010

Citation:
Geoscience BC (2010). QUEST-West Project - AerTEM - Time Constant Tau; Geoscience BC, Map 2010-12-14, scale 1:500 000.