

Characterization of The Blackwater Gold Deposit,

newgold

Central B.C.

E. Looby⁽¹⁾, C. Hart⁽¹⁾ and Michele Della Libera⁽²⁾

(1) Mineral Deposit Research Unit, Department of Earth and Ocean Sciences, University of British Columbia, Vancouver, B.C.
 (2) New Gold Inc., Vancouver, B.C.

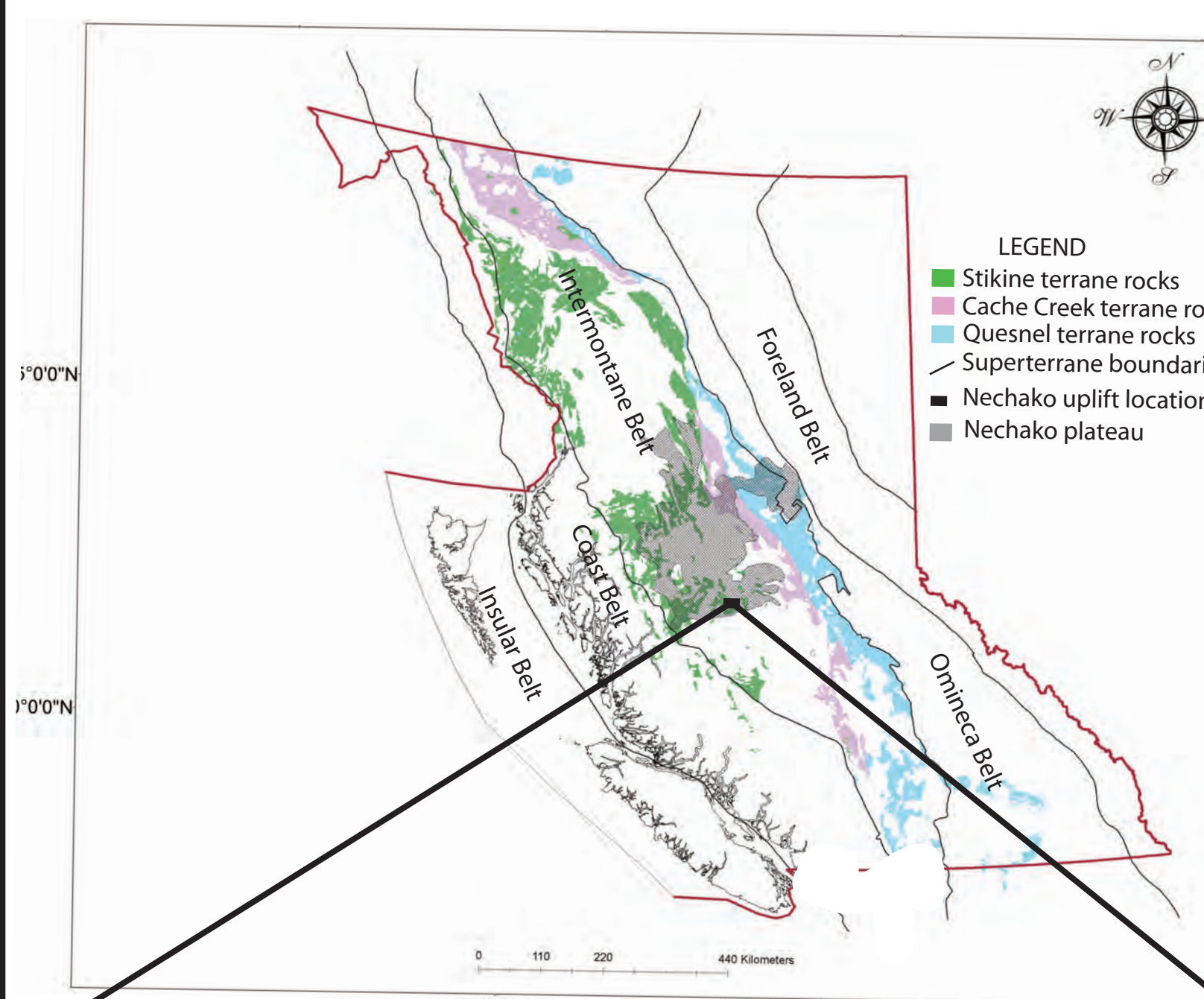


Introduction

The Blackwater Gold project is a low to intermediate sulfidation epithermal style gold deposit. It is characterized by mineralization hosted in felsic to intermediate, chaotic volcanic and volcanoclastic rocks, as well as local pervasive silica and sericite alteration. The hosting volcanic package is thought to range from Jurassic to Cretaceous in age (Lane and Shroeter, 1997)

This research aims to characterize the controls to high grade gold and silver mineralization of the Blackwater Gold project. This will be achieved through the identification of hydrothermal alteration zonation and its association with ore zones in the Blackwater deposit. Preliminary petrographical work has aided in the identification of lithologies, sulfide mineral assemblages and alteration type and will guide future research. In addition to detailed core logging, petrography will be accompanied by SEM work, x-ray diffraction and SWIR reflectance spectroscopy to further characterize the nature of mineralization.

Geological Setting



Location

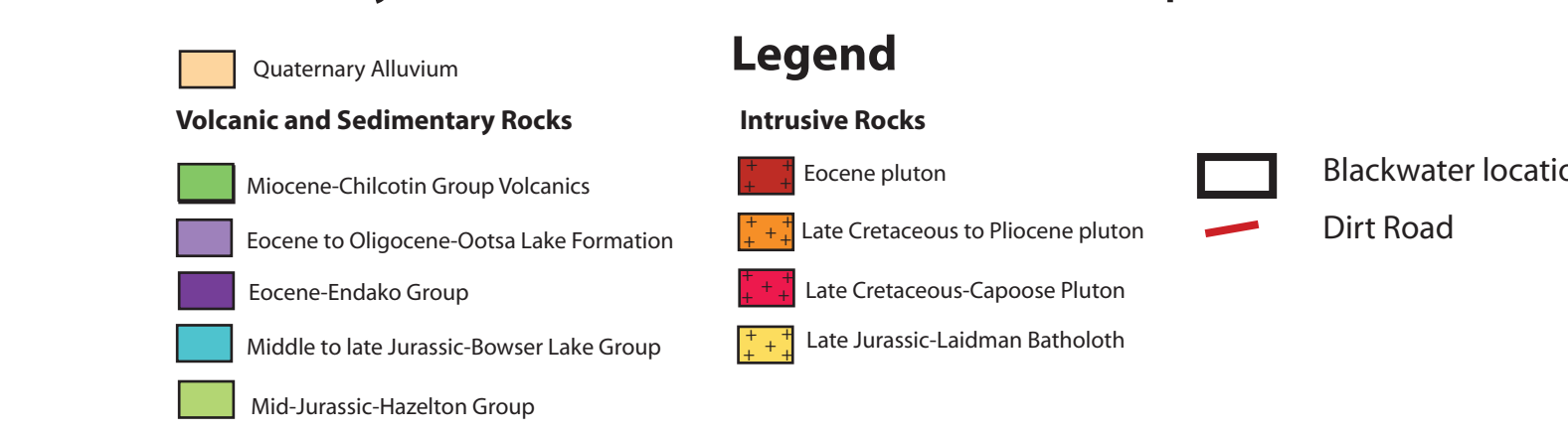
Blackwater is located 110 km southwest of Vanderhoof, BC in the Stikine subdivision of the Intermontane Belt. The deposit lies in the southern portion of Stikinia known as the Nechako Plateau. Major Structures in the area are the Fraser and Yalakom faults which border the plateau on the east and west. Physiographic terrane map adapted from Holland, 1974.

Structures of the Nechako Uplift

The region is bound by the northeast trending Natakuz and Blackwater faults to the north and south. The location of the northwest trending Chedakuz fault is assumed.

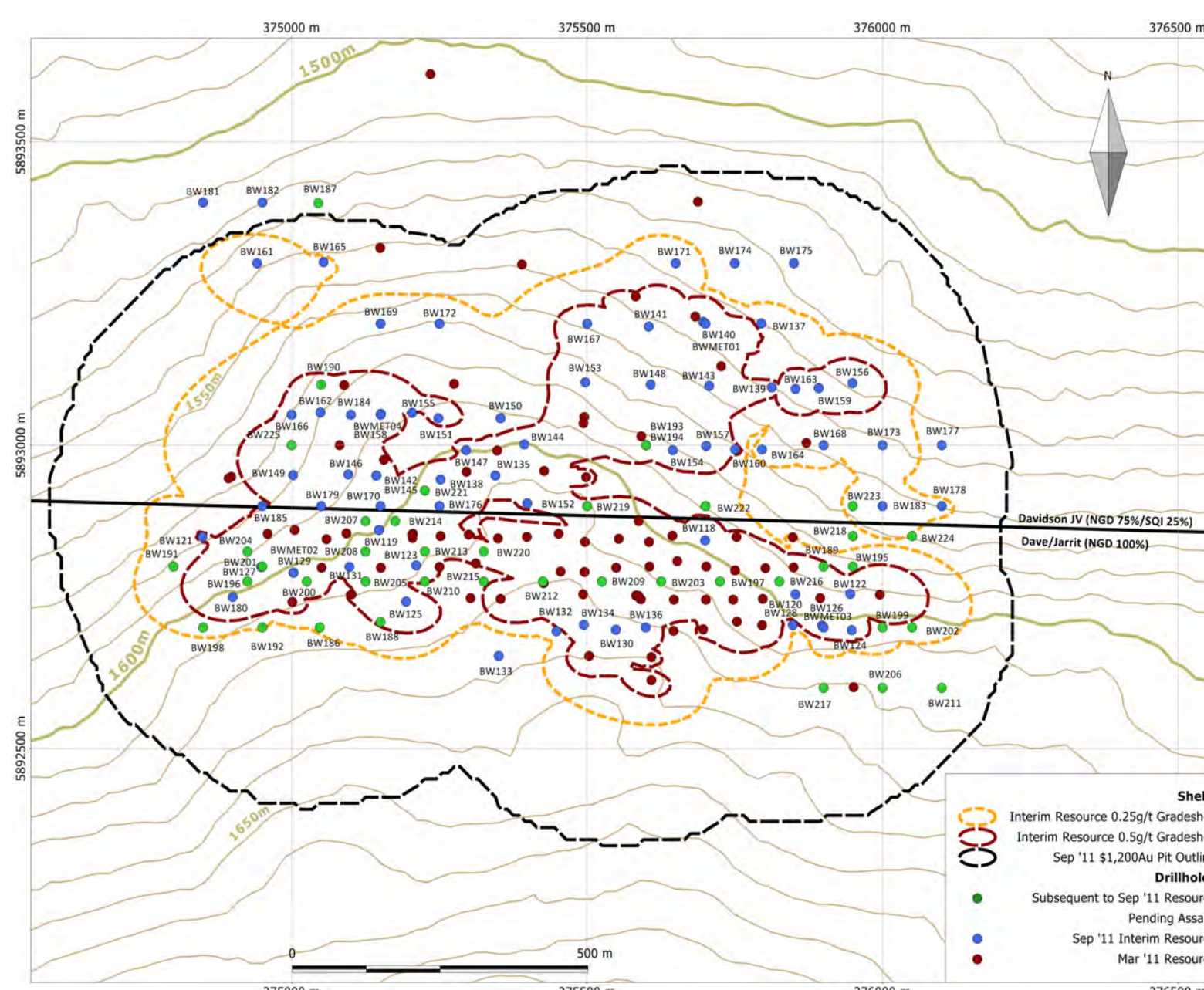
Geology

Lithologies consist of volcanic flows, pyroclastic deposits and reworked volcanics, with compositions ranging from rhyolite to andesite. This simplified map of exposed bedrock geology (adapted from Massey et al., 2005), shows the deposit lying under extensive quaternary cover, but within the Jurassic Hazelton group volcanics, and bound by the Eocene Ootsa Lake Group.



The Resource

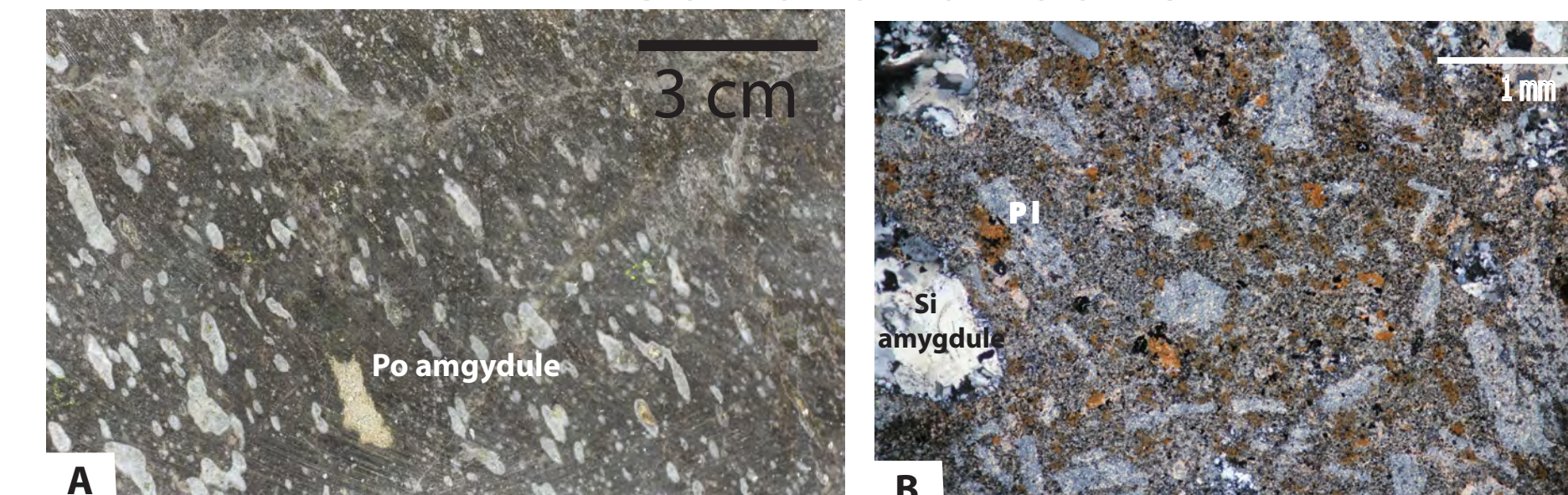
The drill hole map to the left shows a primarily east west trending gold resource. As of September, 2011 the Blackwater mineral resource is estimated to contain 165 million tonnes averaging 1.01 g/t and containing 5.4 million ounces of gold in the Indicated category. The resource contains an additional 39 million tonnes averaging 0.94 g/t to total 1.2 million ounces of gold in the Inferred category. The mineral resource remains open to the north, east, west and at depth. (New Gold Inc. press release, September, 2011)



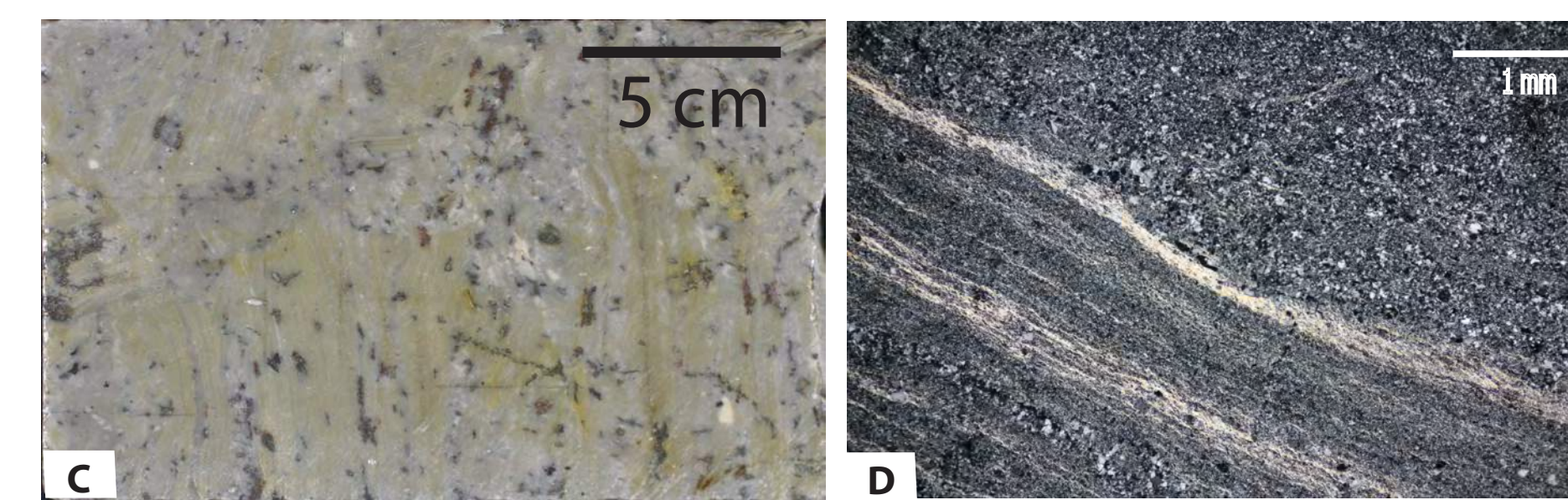
Observations From Petrographic Work

Lithologies

Coherent rocks

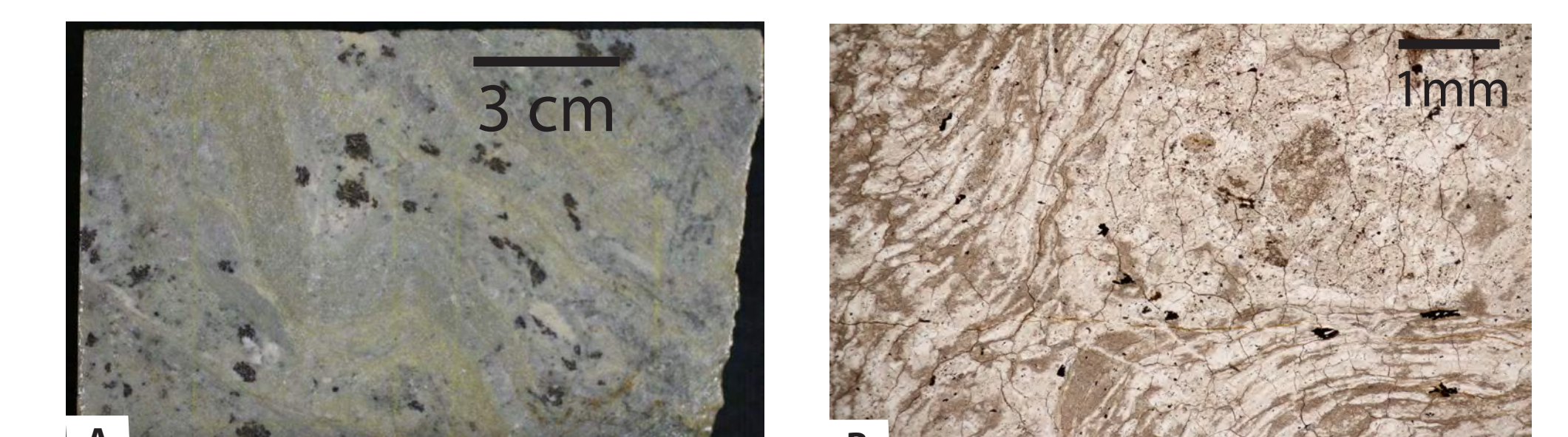


a) Black, plagioclase crystal phyrics, vesicle rich andesite. Vesicles show alignment in flow direction and are infilled with silica and sulfides. b) Thin section showing plagioclase phenocrysts (Pl) with silica amygdules (Si).

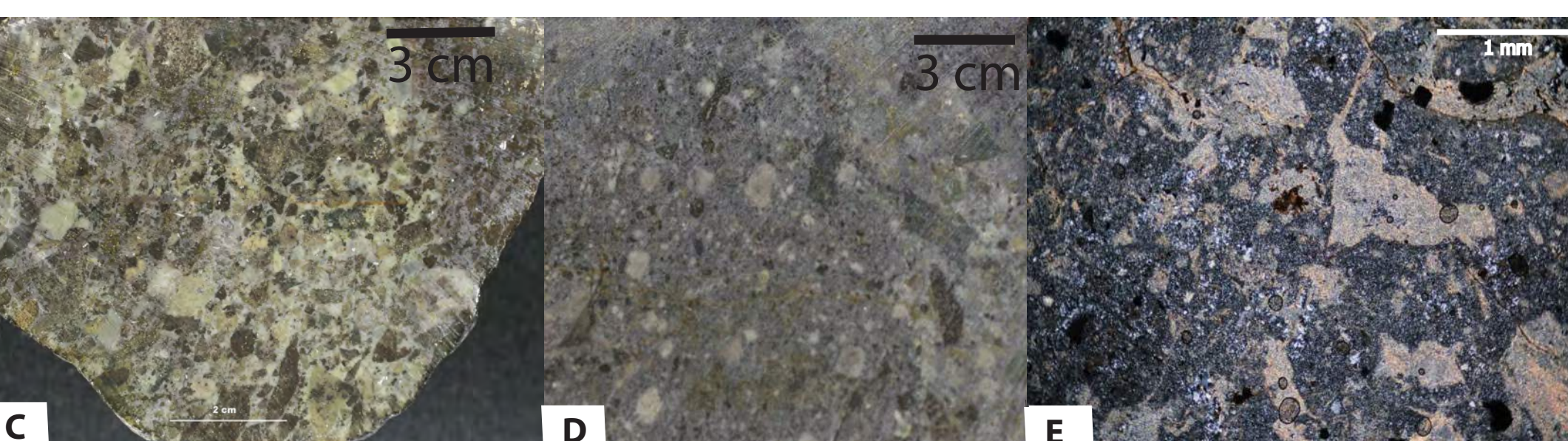


c) Clasts of potentially autobrecciated rhyolite exhibit fine flow banding both in hand sample and d) thin section.

Volcaniclastics

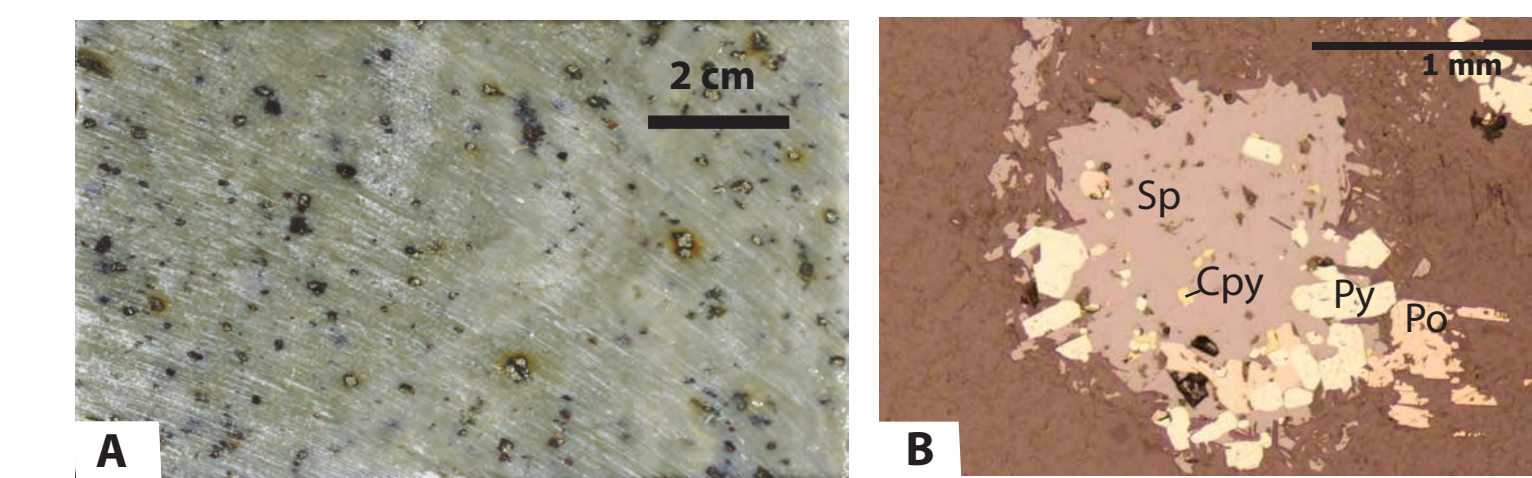


a) Flow banded, siliceous clast bearing rhyolite. b) In thin section, textures resemble those of a welded tuff with flow textures wrapping around a lapilli clast.

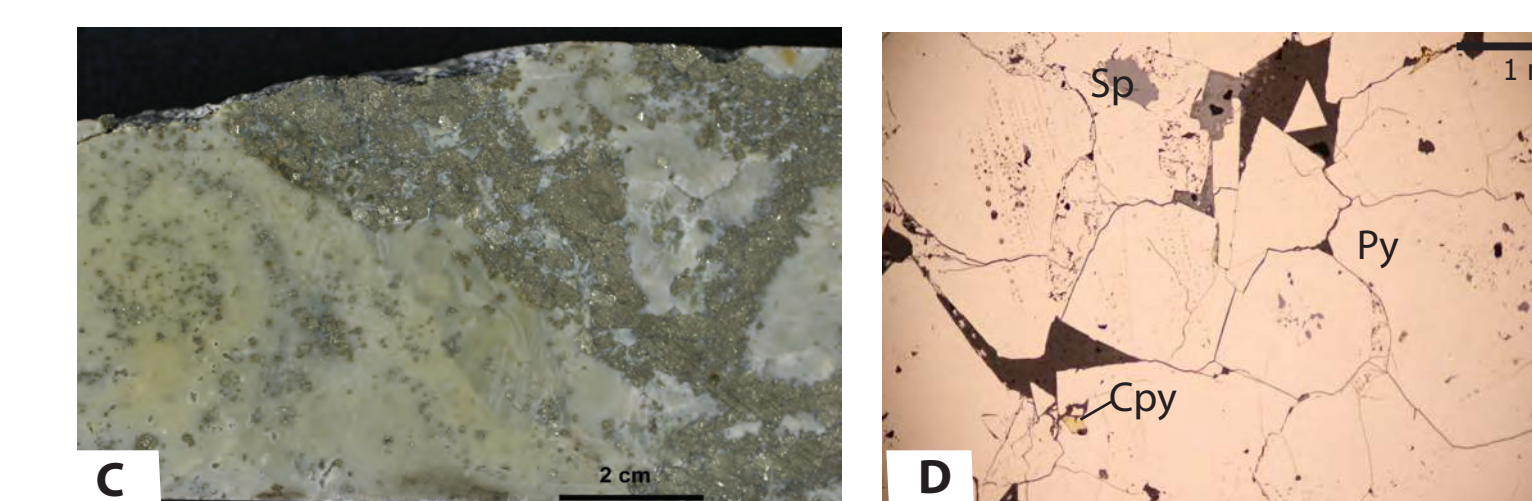


c) Sub-angular to subrounded, clast dominant, moderately sorted polyolithic volcanic breccia. Most likely of epiclastic origin. d) Sub-angular to subrounded, moderately sorted polyolithic breccia. In thin section, (e) textures resemble a welded lapilli tuff.

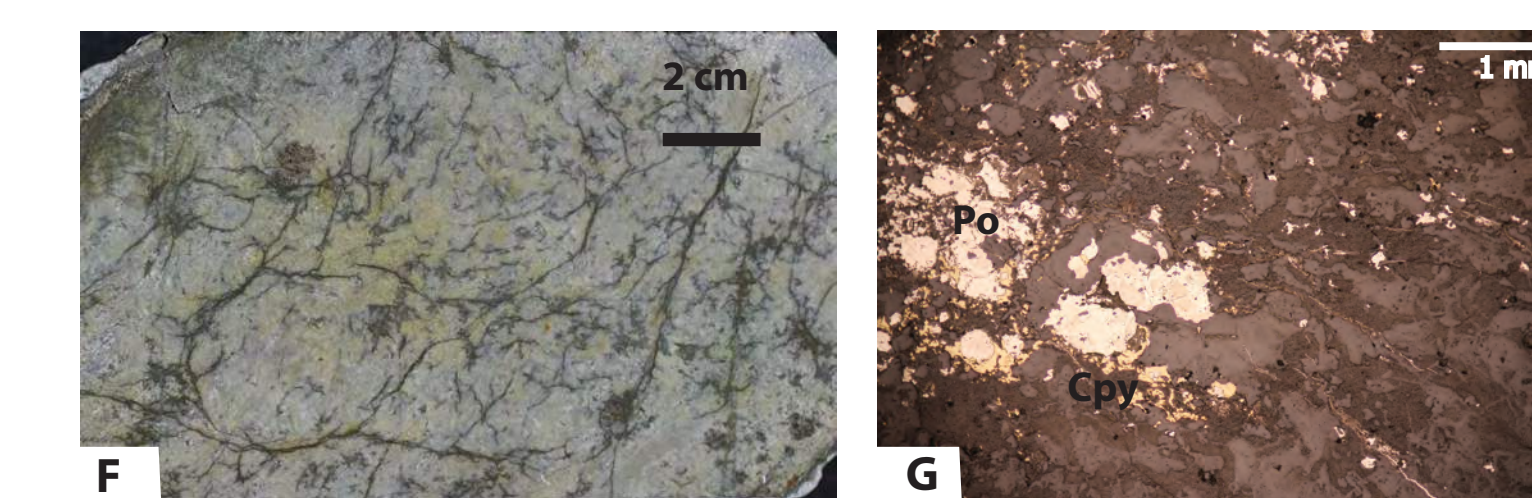
Mineralization



A) Fine grained disseminated and intergrown sulfides in rhyolite B) Polished section reveals sulfides are a mixture of intergrown sphalerite (sp), pyrite (py), pyrrhotite (po) and chalcopyrite (cpy).

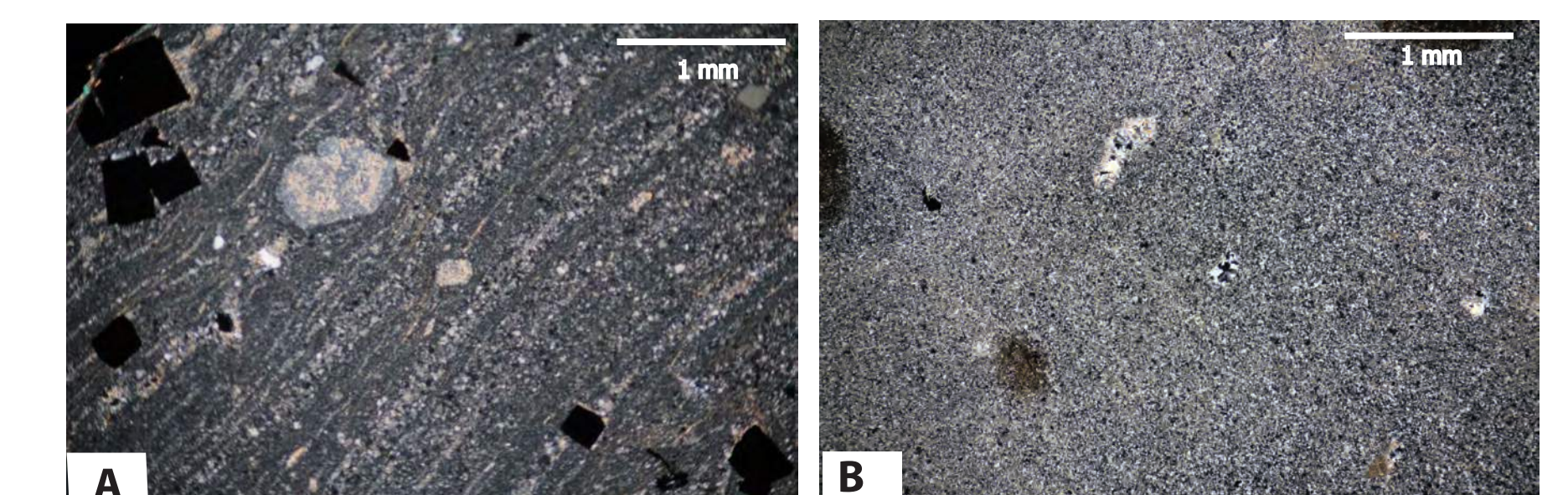


C) A massive pyrite vein in pervasively altered rhyolite. D) Polished section shows minor sphalerite (sp) and trace chalcoprite (cpy) in the pyrite (py) vein.

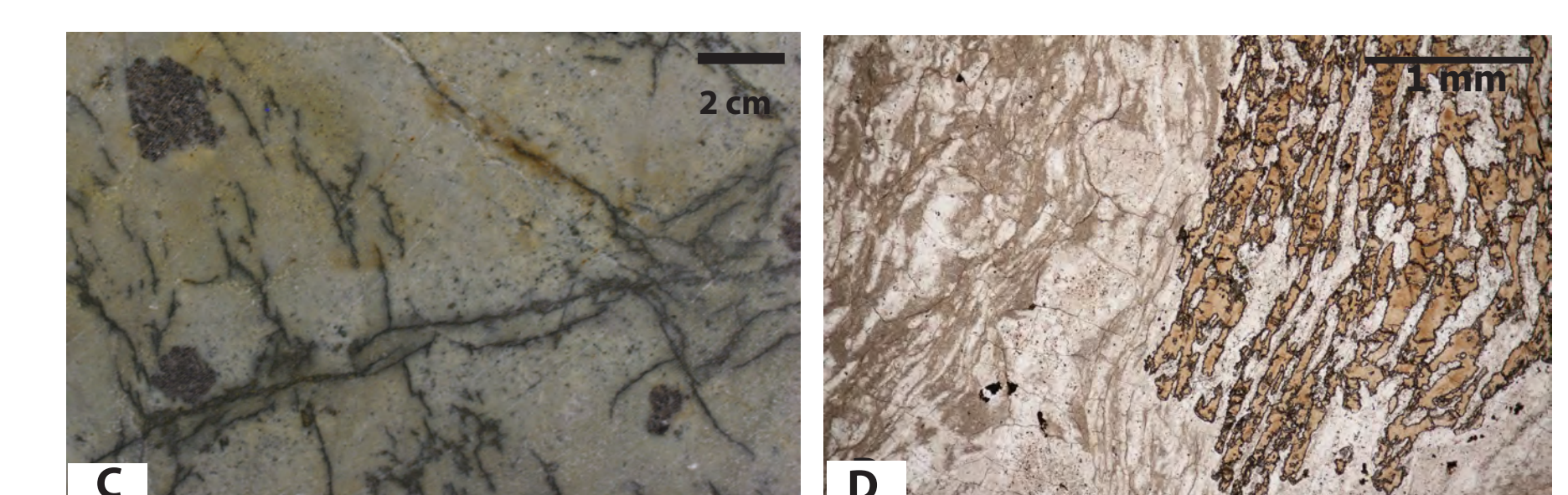


F) Very fine grained dendritic sulfides cross cutting garnets G) Polished section shows chalcopyrite (cpy) growing around coarse grained and dendritic pyrrhotite (po).

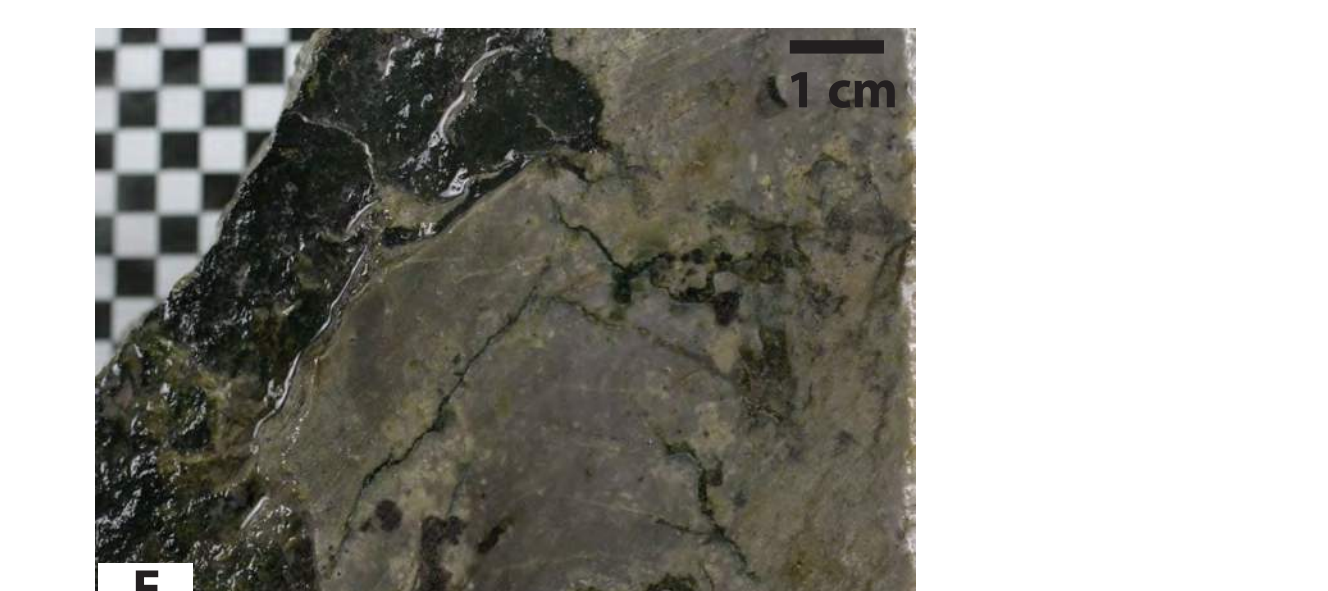
Alteration



The dominant alteration at Blackwater is silica and sericite. The above microphotographs are from the same drill hole, and spaced twenty meters apart. They potentially show the progression from less (a) to more pervasive (b) silica and sericite alteration within a lithology.



Euhedral-anhedral garnets are present in all mineralized volcanic lithologies at Blackwater, however, they are most prevalent in volcanoclastics (C and D) and rhyolites. Garnets are thought to be spessartine, a manganese rich garnet.



E) Chlorite coats fractures throughout the deposit.

Future Work

Preliminary petrographic work has enabled more accurate descriptions of rocks from the Blackwater project area and may help to establish any associations of lithologies and sulfide assemblages with mineralization. Gold has been identified at Blackwater as grains ranging from 5-50 um in diameter, which are associated with sulfides (Simpson, 2011). Further work includes the following:

-SEM work will help to determine if finer grain sizes of gold are present.

-X-ray diffraction and SWIR reflectance spectroscopy will allow for characterization of hydrothermal alteration, and determine its spatial relationship to high grade gold and silver zones

-Creation of a detailed cross section portraying relationships between high grade regions and lithology, structure, alteration and sulfide assemblages.

References

- Holland, S.S., 1974 Bulletin 48: Landforms of British Columbia, A Physiographic Outline (Digitization by M.G. Mihalynuk 2009)
- Lane, R.E., and Shroeter, T.G., A Review of Mineralization In The Interior Plateau, Central British Columbia (Parts of 93B, C and F), British Columbia Geoscience Project, Paper 1997-2, pages 237-256.
- Massey, N.W.D., MacIntyre, D.G., Desjardins, P.J. and Cooney, R.T., 2005: Digital Geology Map of British Columbia: Tile NN10 Central B.C., B.C. Ministry of Energy and Mines, Geofile 2005-6, scale 1:250,000.
- New Gold Inc., "New Gold Announces Significant Increase in Gold Resources at Blackwater Project", September 19, 2011, retrieved from www.newgold.com/MediaCentre/NewGoldNews/2011/default.aspx
- Simpson, R.G., Technical Report - Blackwater Gold Project, prepared for Ritchfield Ventures Corp. and Silver Quest Resources Ltd., 72p, 2011

Acknowledgements

This study is being conducted under a sponsorship agreement between MDRU and New Gold Inc. This project has also been funded by a grant from Geoscience BC. E.Looby acknowledges L. Porritt for helpful discussions regarding volcanic textures, and M. Petersen for his revisions of this poster.