



## QUEST-NORTHWEST

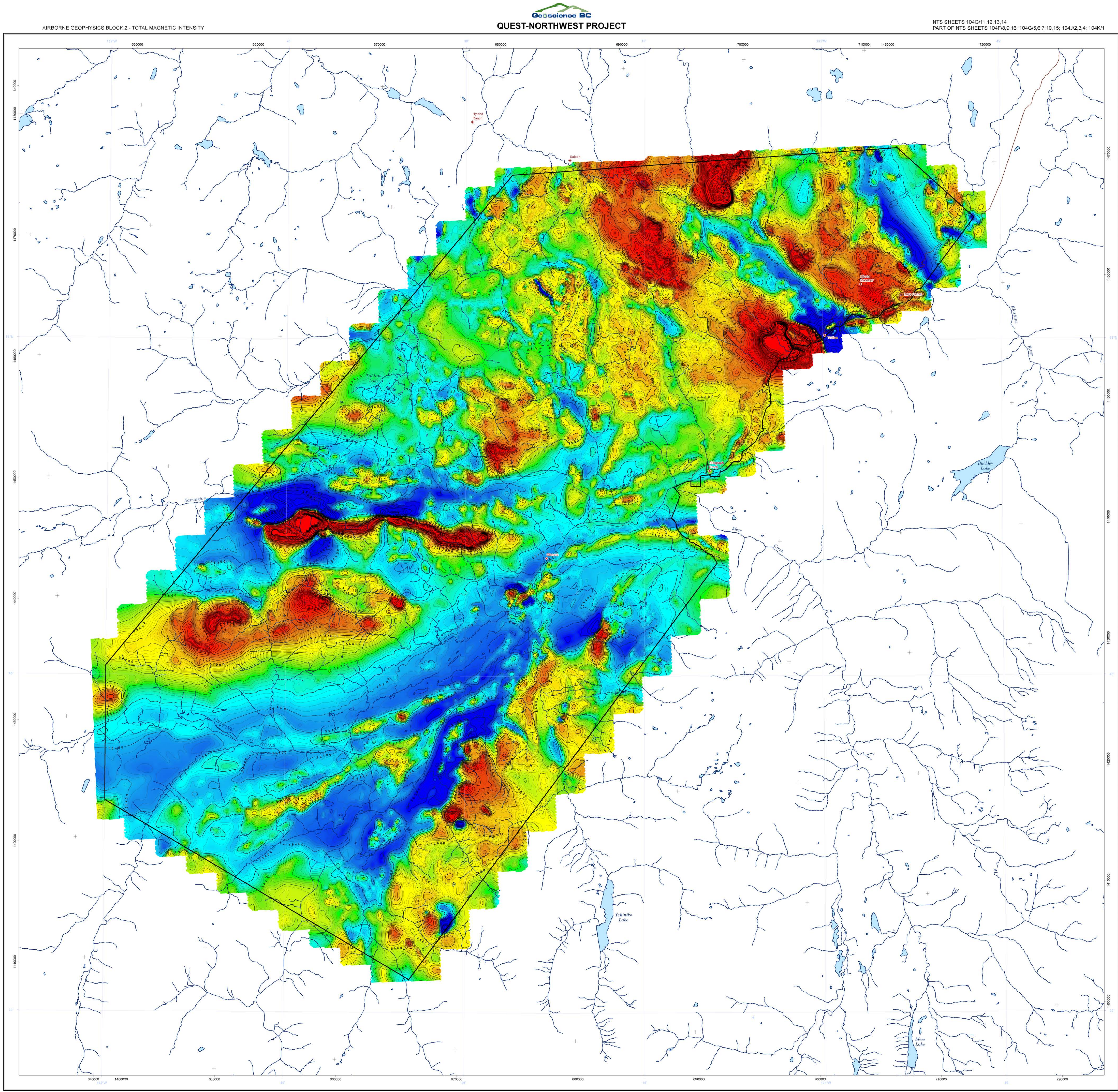
Geoscience BC launched its latest regional project, QUEST-Northwest, in April 2011. The QUEST-Northwest area is host to a number of known mineral deposits and remains a highly prospective area for the discovery of new copper, gold, silver and molybdenum resources. The project aims to compile and update existing datasets as well as provide new geoscience data to help focus exploration.

## NEW HIGH RESOLUTION AIRBORNE MAGNETIC DATA

The QUEST-Northwest geophysical program includes two airborne magnetic surveys, in the Dease Lake and Telegraph Creek areas (Block 1 and Block 2). Both surveys were flown at a line spacing of 250 m, in an east-west orientation with 2500 m spaced tie lines. The flights were flown at a nominal height of 80 m above ground level.

The terrain in both survey areas is rugged and varied, ranging from 400 m to more than 2000 m elevation. Block 1 was flown by Aeroquest Airborne (Mississauga, Ontario) using a HeliMAGstinger system. The survey covered approximately 5755 km<sup>2</sup> with a total of 25 357 line km flown. Block 2 was flown by Geo Data Solutions Inc. (Laval, Quebec), also using a HeliMAG stinger system. The survey covered approximately 2361 km<sup>2</sup> with a total of 11 337 line km flown.

Both datasets are available for download from Geoscience BC's website ([www.geosciencebc.com](http://www.geosciencebc.com)) or stop by Booth F27 on Wednesday and Thursday to pick up a USB drive.



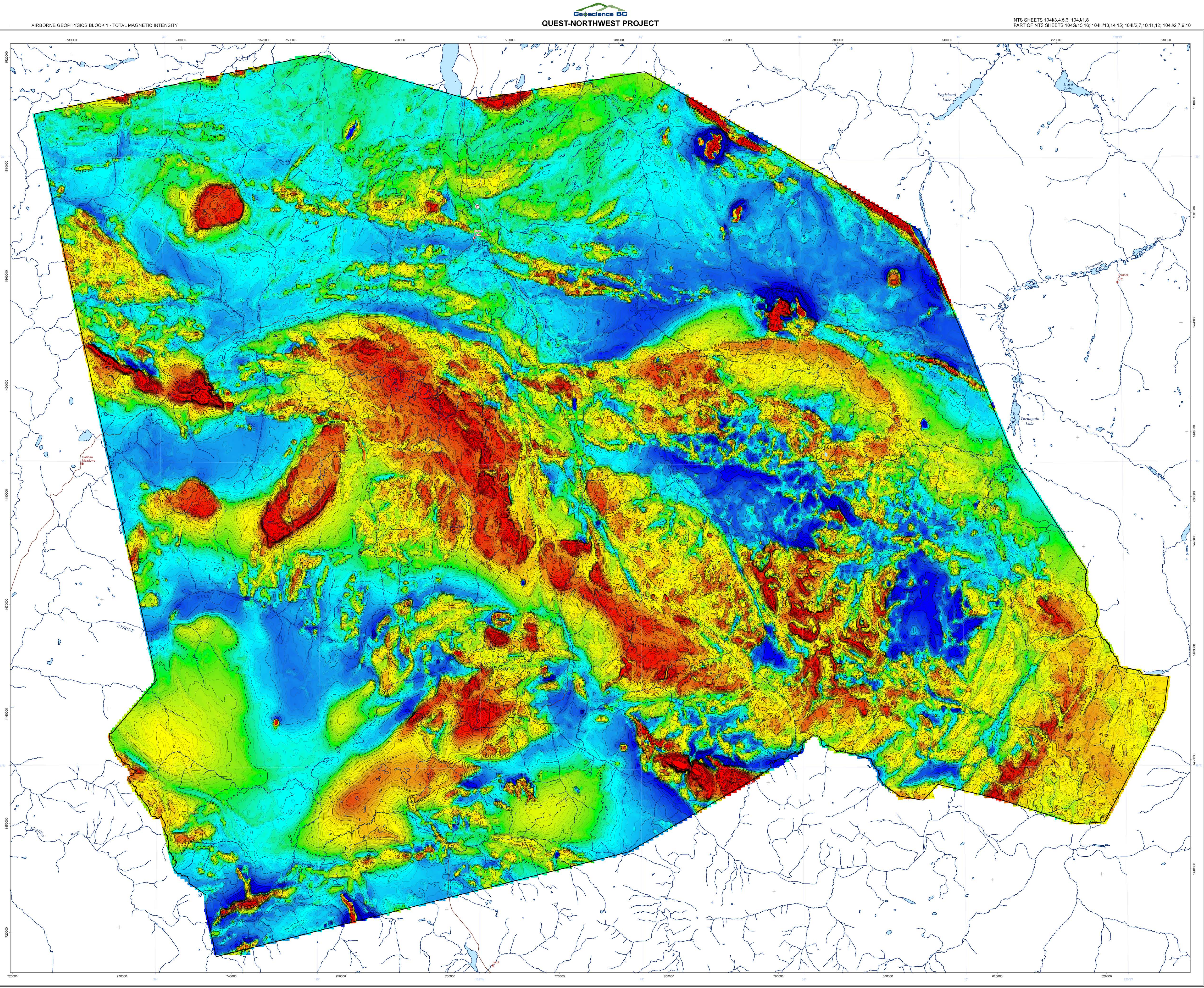
National Topographic System			
Series	Scale	Projection	Zone
NAD83	1:50,000	UTM	18N
NAD83	1:250,000	UTM	18N
NAD83	1:500,000	UTM	18N
NAD83	1:1,000,000	UTM	18N
NAD83	1:2,500,000	UTM	18N
NAD83	1:5,000,000	UTM	18N
NAD83	1:10,000,000	UTM	18N
NAD83	1:25,000,000	UTM	18N
NAD83	1:50,000,000	UTM	18N
NAD83	1:100,000,000	UTM	18N

Legend	
Population (line)	1:50,000
Population (area)	1:50,000
Population (point)	1:50,000
Population (line)	1:50,000
Population (area)	1:50,000
Population (point)	1:50,000

QUEST-NORTHWEST PROJECT  
Aitonne Geophysics - Block 2  
PART OF NTS SHEETS 1046/15, 16, 1046/13, 14, 15, 1046/2, 3, 4, 1046/1  
1046/2, 3, 4, 1046/1

Geoscience BC  
QUEST-NORTHWEST PROJECT  
Aitonne Geophysics - Block 2  
PART OF NTS SHEETS 1046/15, 16, 1046/13, 14, 15, 1046/2, 3, 4, 1046/1  
1046/2, 3, 4, 1046/1

GEOSCIENCE BC - QUEST-NORTHWEST - GEOPHYSICS



National Topographic System			
Series	Scale	Projection	Zone
NAD83	1:50,000	UTM	18N
NAD83	1:250,000	UTM	18N
NAD83	1:500,000	UTM	18N
NAD83	1:1,000,000	UTM	18N
NAD83	1:2,500,000	UTM	18N
NAD83	1:5,000,000	UTM	18N
NAD83	1:10,000,000	UTM	18N
NAD83	1:25,000,000	UTM	18N
NAD83	1:50,000,000	UTM	18N
NAD83	1:100,000,000	UTM	18N

Legend	
Population (line)	1:50,000
Population (area)	1:50,000
Population (point)	1:50,000
Population (line)	1:50,000
Population (area)	1:50,000
Population (point)	1:50,000

QUEST-NORTHWEST PROJECT  
Aitonne Geophysics - Block 1  
PART OF NTS SHEETS 1046/15, 16, 1046/13, 14, 15, 1046/2, 3, 4, 1046/1  
1046/2, 3, 4, 1046/1

Geoscience BC  
QUEST-NORTHWEST PROJECT  
Aitonne Geophysics - Block 1  
PART OF NTS SHEETS 1046/15, 16, 1046/13, 14, 15, 1046/2, 3, 4, 1046/1  
1046/2, 3, 4, 1046/1

GEOSCIENCE BC - QUEST-NORTHWEST - GEOPHYSICS