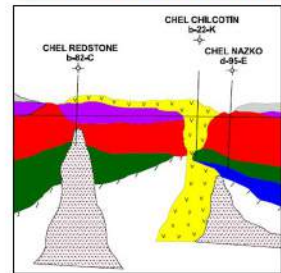
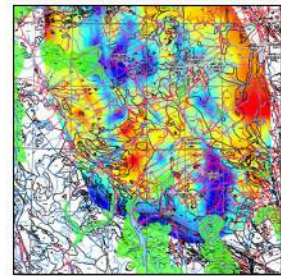
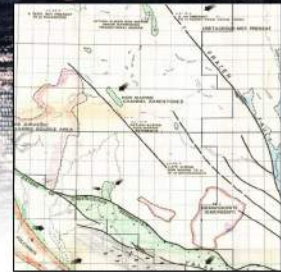
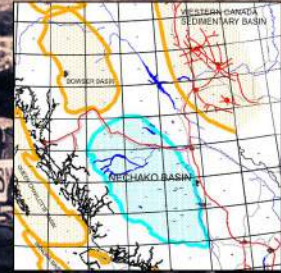
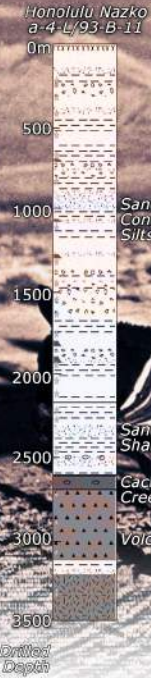


# New Frontier Nechako Basin



## New Geotechnical Study Available through Arcis in Partnership with Geoscience B.C.

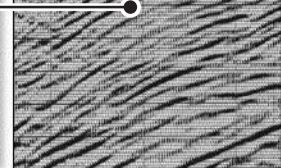
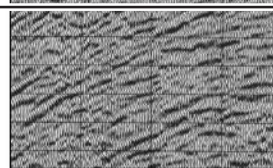
The Nechako Basin represents one of the intermontaine basins of central B.C. which has seen limited activity since the early 80's. Past activity included acquisition of an estimated 1300 km of regional 2D vibroseis data, complementary gravity data, and subsequent drilling of exploratory wells. Previous to this, a number of wells in the 50's and 60's had been drilled to evaluate basin potential. Recently the Geological Survey of Canada (GSC) in cooperation with the British Columbia Ministry of Energy & Mines (BCMÉM) has conducted updated mapping and field work to further define the potential of this Basin. A new geotechnical study is now available that helps to define the prospectivity of the basin.

### Geotechnical study includes:

1. Reprocessing and interpretation of ~1300 km of 1980's vintage vibroseis 2D data (exclusive data)
  - regional interpretation of seismic data
  - identification of areas with near surface volcanic / volcano clastic problems
  - petroleum & mineral prospectivity mapping
  - interpretation of structural and depositional style
  - final report and presentation for subscribers
2. Copies of original mapping and reports from Canadian Hunter (exclusive data)
3. Incorporation of current geotechnical data (public domain data)
  - airborne geophysical data
  - surface geological data
  - gravity data
  - reinterpretation of well information
  - new work by GSC / BC MEM
  - regional tectonic models

ORIGINAL DATA

REPROCESSED DATA



the answer lies within

2600, 111 - 5th Avenue S.W.  
Calgary, Alberta T2P 3Y6  
403.781.1700 www.arcis.com

For further information please contact: Mark Watson 403.781.1724 or Mike Kary 403.781.1723