

**QUEST South
Regional Geochemical Data**

**SOUTHERN
BRITISH COLUMBIA**
(082E, L, M; 092H, I, J, O & P)



TRANSVERSE MERCATOR PROJECTION
NORTH AMERICAN DATUM 1983

Molybdenum (Mo)

Percentile	Concentrations		
	Stream	Lake	Till
MAX	107.00	40.50	19.03
95TH	3.61	11.76	2.15
90TH	2.40	8.34	1.56
70TH	1.12	5.03	0.98
50TH	0.73	3.52	0.78
30TH	0.51	2.60	0.63
MIN	0.03	0.19	0.34

Summary Statistics

Stream Sediments

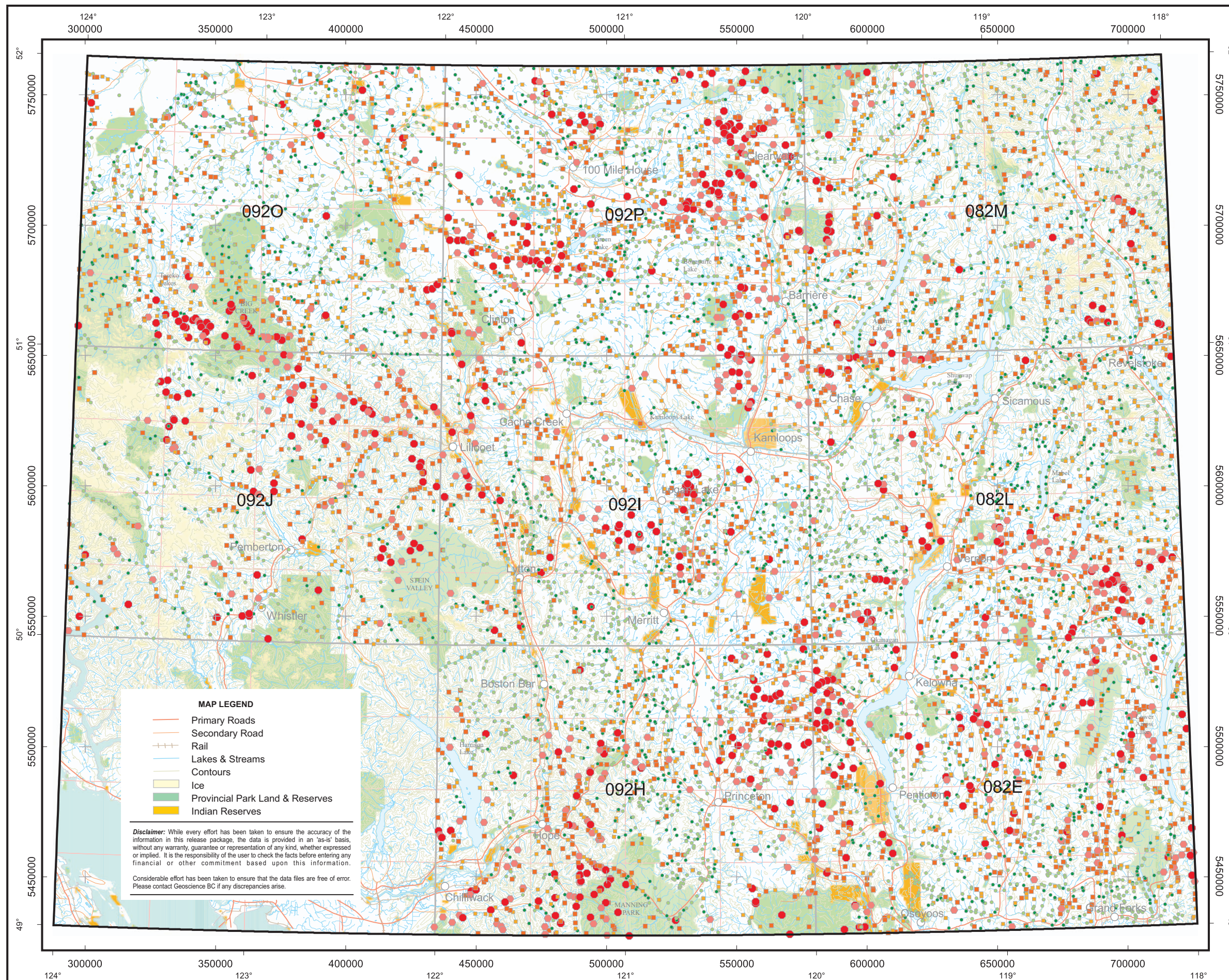
Variable -	Mo	Mean -	1.31
Units -	ppm	Median -	0.73
DL -	0.01	Mode -	0.47
Method -	ICPMS	Range -	106.97
N -	8545	StD -	3.15
N>DL -	8545	CV -	2.400

Lake Sediments

Variable -	Mo	Mean -	4.67
Units -	ppm	Median -	3.52
DL -	0.01	Mode -	2.28
Method -	ICPMS	Range -	40.31
N -	769	StD -	4.19
N>DL -	769	CV -	0.899

Basal Till Samples

Variable -	Mo	Mean -	1.04
Units -	ppm	Median -	0.78
DL -	0.01	Mode -	0.41
Method -	ICPMS	Range -	18.69
N -	190	StD -	1.43
N>DL -	190	CV -	1.382



MAP LEGEND

- Primary Roads
- Secondary Road
- Rail
- Lakes & Streams
- Contours
- Ice
- Provincial Park Land & Reserves
- Indian Reserves

Disclaimer: While every effort has been taken to ensure the accuracy of the information in this release package, the data is provided in an "as-is" basis, without any warranty, guarantee or representation of any kind, whether expressed or implied. It is the responsibility of the user to check the facts before entering any financial or other commitment based upon this information.

Considerable effort has been taken to ensure that the data files are free of error. Please contact Geoscience BC if any discrepancies arise.

**QUEST South
Regional Geochemical Data**

**SOUTHERN
BRITISH COLUMBIA**
(082E, L, M; 092H, I, J, O & P)



TRANSVERSE MERCATOR PROJECTION
NORTH AMERICAN DATUM 1983

Nickel (Ni)

Percentile	Concentrations		
	Stream	Lake	Till
MAX	1710.0	456.1	174.1
95TH	79.2	51.9	71.8
90TH	54.6	41.5	59.4
70TH	29.9	26.3	36.2
50TH	19.2	19.3	29.0
30TH	11.4	13.7	23.0
MIN	0.1	1.5	6.4

Summary Statistics

Stream Sediments

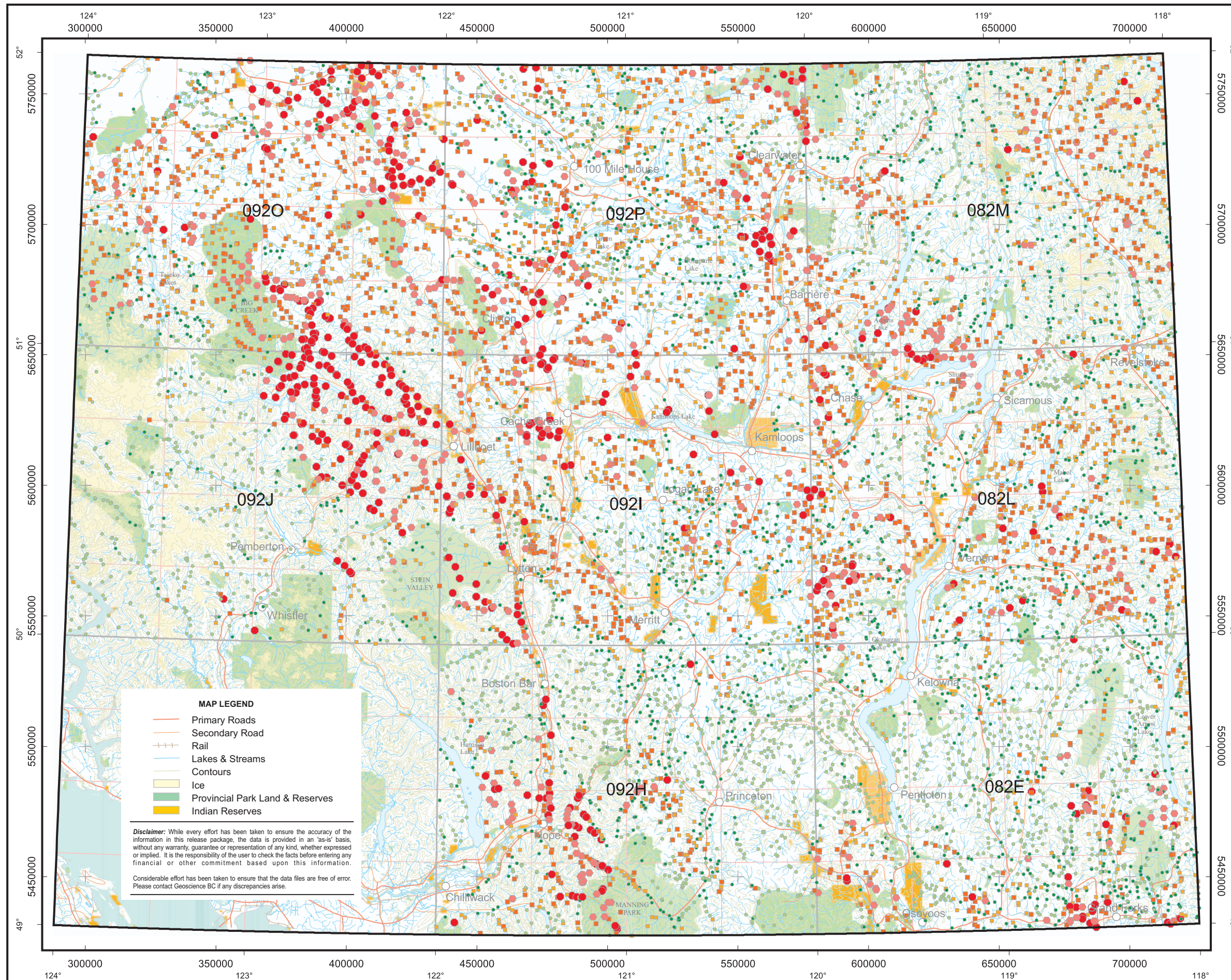
Variable -	Ni	Mean -	31.75
Units -	ppm	Median -	19.20
DL -	0.1	Mode -	6.10
Method -	ICPMS	Range -	1709.9
N -	8545	StD -	71.39
N>DL -	8544	CV -	2.249

Lake Sediments

Variable -	Ni	Mean -	23.81
Units -	ppm	Median -	19.30
DL -	0.1	Mode -	16.00
Method -	ICPMS	Range -	454.6
N -	769	StD -	25.55
N>DL -	769	CV -	1.073

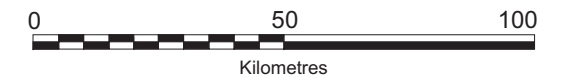
Basal Till Samples

Variable -	Ni	Mean -	34.78
Units -	ppm	Median -	29.00
DL -	0.1	Mode -	19.10
Method -	ICPMS	Range -	167.7
N -	190	StD -	23.76
N>DL -	190	CV -	0.683



**QUEST South
Regional Geochemical Data**

**SOUTHERN
BRITISH COLUMBIA**
(082E, L, M; 092H, I, J, O & P)



TRANSVERSE MERCATOR PROJECTION
NORTH AMERICAN DATUM 1983

Phosphorus (P)

Percentile	Concentrations		
	Stream	Lake	Till
MAX	0.990	0.990	0.990
95TH	0.217	0.147	0.174
90TH	0.162	0.116	0.160
70TH	0.110	0.083	0.132
50TH	0.086	0.065	0.121
30TH	0.070	0.047	0.111
MIN	0.001	0.006	0.055

Summary Statistics

Stream Sediments

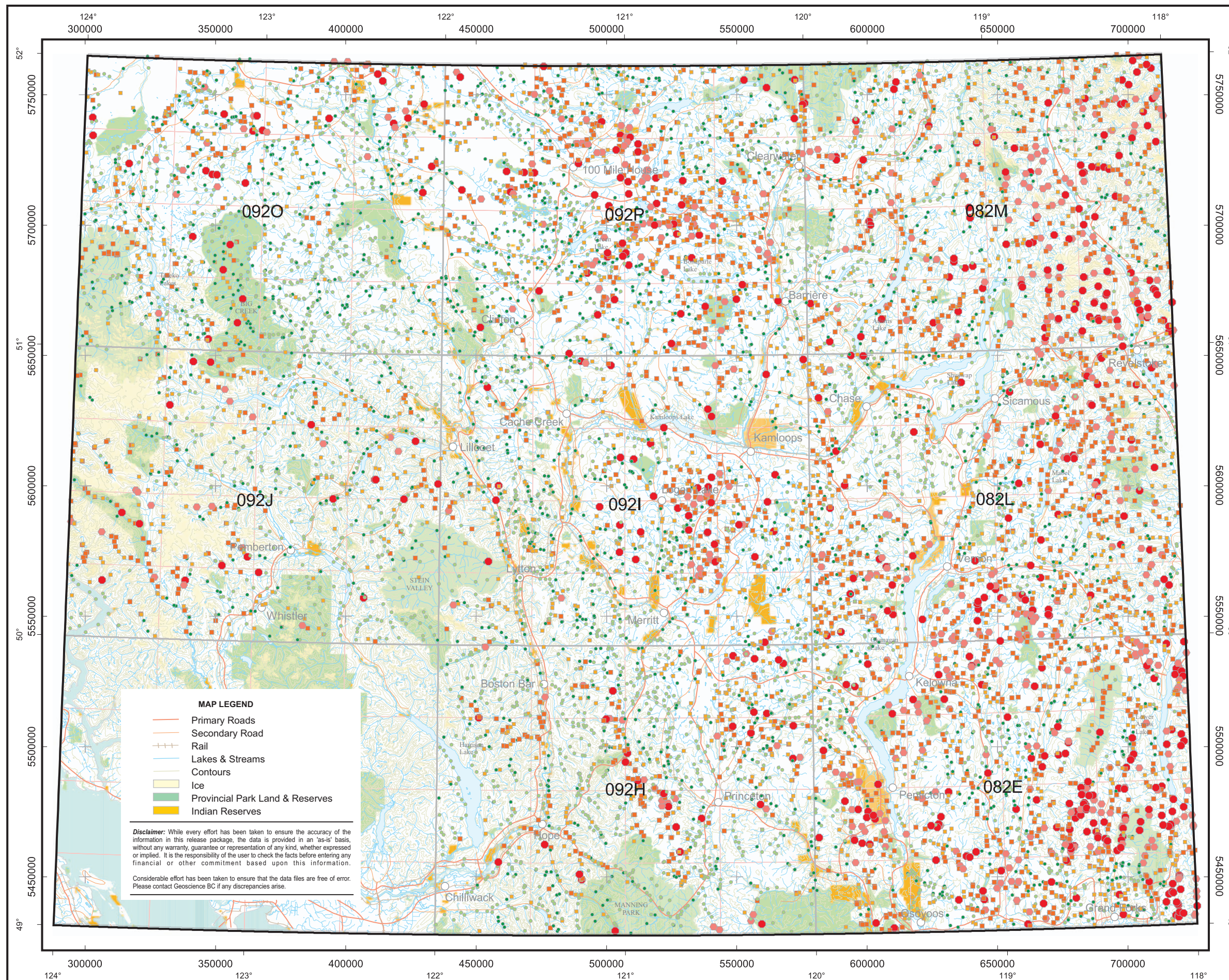
Variable -	P	Mean -	0.12
Units -	%	Median -	0.09
DL -	.001	Mode -	0.07
Method -	ICPMS	Range -	0.989
N -	8545	StD -	0.14
N>DL -	8544	CV -	1.177

Lake Sediments

Variable -	P	Mean -	0.09
Units -	%	Median -	0.07
DL -	.001	Mode -	0.04
Method -	ICPMS	Range -	0.984
N -	769	StD -	0.13
N>DL -	769	CV -	1.500

Basal Till Samples

Variable -	P	Mean -	0.14
Units -	%	Median -	0.12
DL -	.001	Mode -	0.12
Method -	ICPMS	Range -	0.935
N -	190	StD -	0.13
N>DL -	190	CV -	0.898



**QUEST South
Regional Geochemical Data**

**SOUTHERN
BRITISH COLUMBIA**
(082E, L, M; 092H, I, J, O & P)



TRANSVERSE MERCATOR PROJECTION
NORTH AMERICAN DATUM 1983

Potassium (K)

Percentile	Concentrations		
	Stream	Lake	Till
MAX	1.45	1.13	0.65
95TH	0.32	0.31	0.33
90TH	0.22	0.21	0.29
70TH	0.12	0.09	0.20
50TH	0.09	0.05	0.15
30TH	0.06	0.03	0.12
MIN	0.01	0.01	0.03

Summary Statistics

Stream Sediments

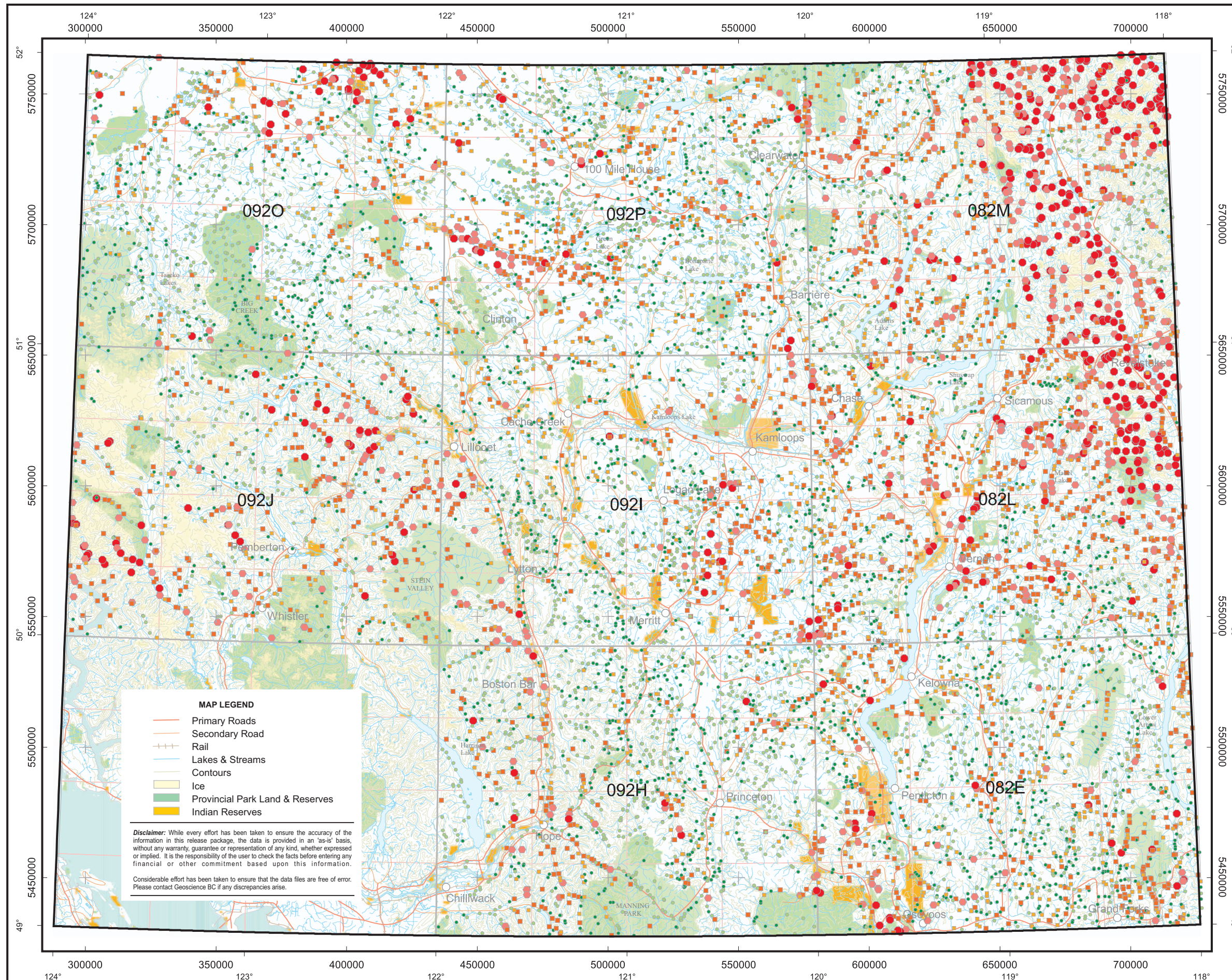
Variable -	K	Mean -	0.12
Units -	%	Median -	0.09
DL -	0.01	Mode -	0.07
Method -	ICPMS	Range -	1.44
N -	8545	StD -	0.10
N>DL -	8522	CV -	0.885

Lake Sediments

Variable -	K	Mean -	0.09
Units -	%	Median -	0.05
DL -	0.01	Mode -	0.03
Method -	ICPMS	Range -	1.12
N -	769	StD -	0.12
N>DL -	747	CV -	1.283

Basal Till Samples

Variable -	K	Mean -	0.18
Units -	%	Median -	0.15
DL -	0.01	Mode -	0.15
Method -	ICPMS	Range -	0.62
N -	190	StD -	0.09
N>DL -	190	CV -	0.524



MAP LEGEND

- Primary Roads
- Secondary Road
- Rail
- Lakes & Streams
- Contours
- Ice
- Provincial Park Land & Reserves
- Indian Reserves

Disclaimer: While every effort has been taken to ensure the accuracy of the information in this release package, the data is provided in an "as-is" basis, without any warranty, guarantee or representation of any kind, whether expressed or implied. It is the responsibility of the user to check the facts before entering any financial or other commitment based upon this information.

Considerable effort has been taken to ensure that the data files are free of error. Please contact Geoscience BC if any discrepancies arise.

**QUEST South
Regional Geochemical Data**

**SOUTHERN
BRITISH COLUMBIA**
(082E, L, M; 092H, I, J, O & P)



TRANSVERSE MERCATOR PROJECTION
NORTH AMERICAN DATUM 1983

Scandium (Sc)

Percentile	Concentrations		
	Stream	Lake	Till
MAX	21.6	10.2	16.2
95TH	8.4	5.0	12.4
90TH	7.0	3.5	10.7
70TH	4.5	1.5	8.4
50TH	3.3	0.9	6.9
30TH	2.4	0.6	5.6
MIN	0.2	0.1	2.6

Summary Statistics

Stream Sediments

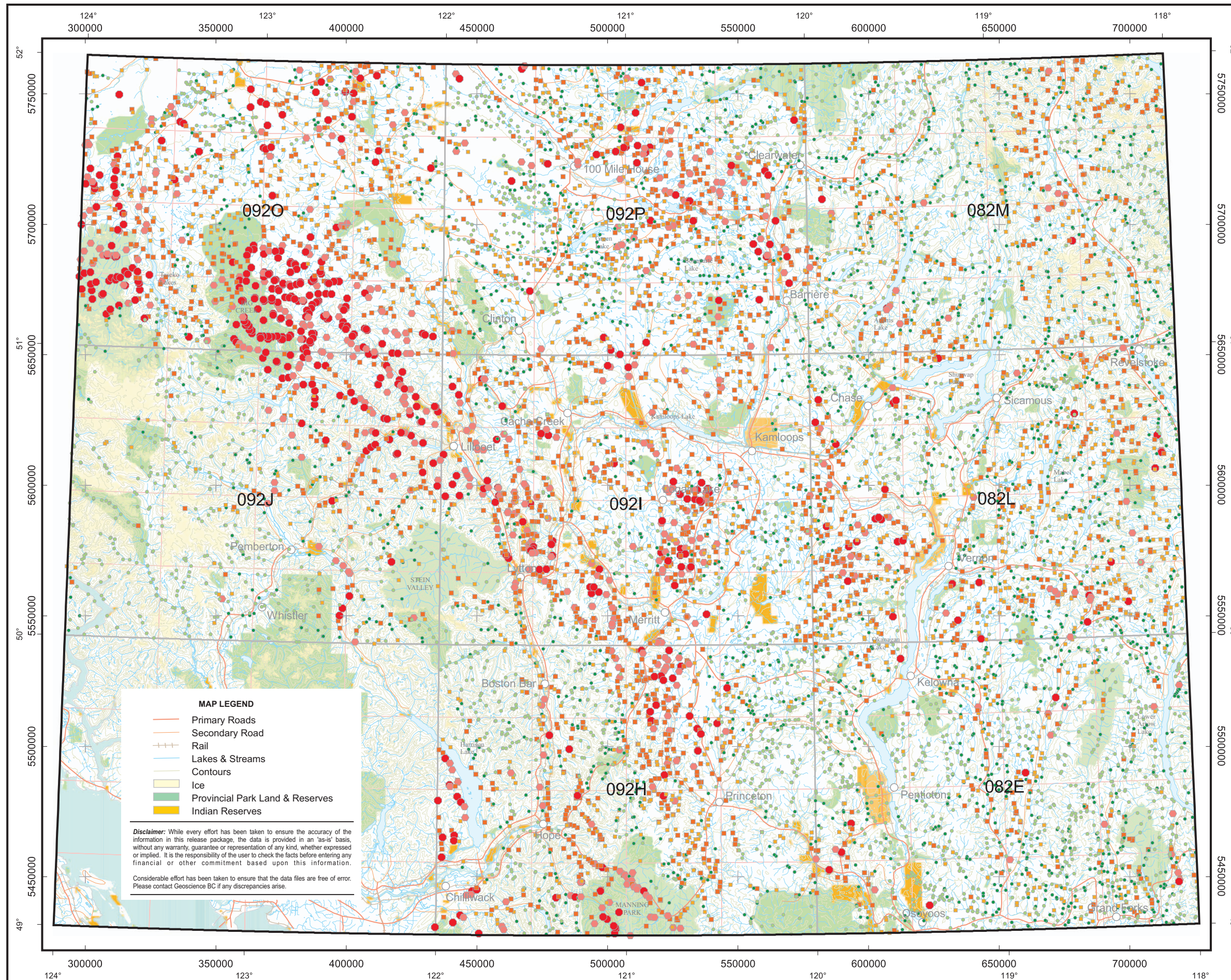
Variable -	Sc	Mean -	3.88
Units -	ppm	Median -	3.30
DL -	0.1	Mode -	2.30
Method -	ICPMS	Range -	21.4
N -	8545	StD -	2.31
N>DL -	8545	CV -	0.595

Lake Sediments

Variable -	Sc	Mean -	1.48
Units -	ppm	Median -	0.90
DL -	0.1	Mode -	0.40
Method -	ICPMS	Range -	10.1
N -	769	StD -	1.55
N>DL -	764	CV -	1.046

Basal Till Samples

Variable -	Sc	Mean -	7.29
Units -	ppm	Median -	6.90
DL -	0.1	Mode -	6.90
Method -	ICPMS	Range -	13.6
N -	190	StD -	2.69
N>DL -	190	CV -	0.369



MAP LEGEND

- Primary Roads
- Secondary Road
- Rail
- Lakes & Streams
- Contours
- Ice
- Provincial Park Land & Reserves
- Indian Reserves

Disclaimer: While every effort has been taken to ensure the accuracy of the information in this release package, the data is provided in an "as-is" basis, without any warranty, guarantee or representation of any kind, whether expressed or implied. It is the responsibility of the user to check the facts before entering any financial or other commitment based upon this information.

Considerable effort has been taken to ensure that the data files are free of error. Please contact Geoscience BC if any discrepancies arise.

**QUEST South
Regional Geochemical Data**

**SOUTHERN
BRITISH COLUMBIA**
(082E, L, M; 092H, I, J, O & P)



TRANSVERSE MERCATOR PROJECTION
NORTH AMERICAN DATUM 1983

Selenium (Se)

Percentile	Concentrations		
	Stream	Lake	Till
MAX	58.4	26.9	0.7
95TH	2.4	3.2	0.5
90TH	1.7	2.4	0.5
70TH	0.9	1.3	0.4
50TH	0.6	0.9	0.3
30TH	0.4	0.6	0.3
MIN	0.1	0.1	0.1

Summary Statistics

Stream Sediments

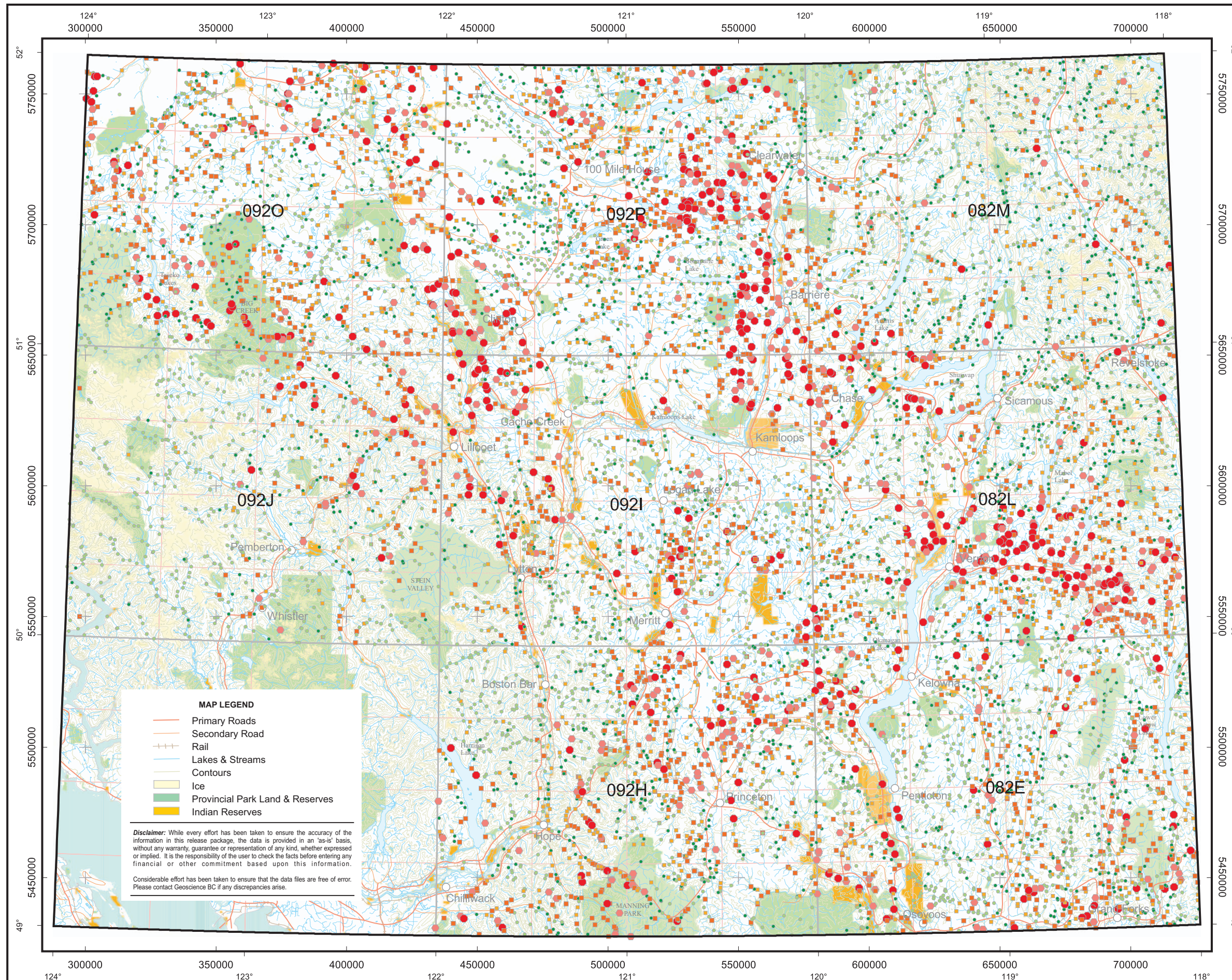
Variable -	Se	Mean -	0.91
Units -	ppm	Median -	0.60
DL -	0.1	Mode -	0.40
Method -	ICPMS	Range -	58.3
N -	8545	StD -	1.60
N>DL -	8232	CV -	1.761

Lake Sediments

Variable -	Se	Mean -	1.31
Units -	ppm	Median -	0.90
DL -	0.1	Mode -	0.50
Method -	ICPMS	Range -	26.8
N -	769	StD -	1.79
N>DL -	757	CV -	1.372

Basal Till Samples

Variable -	Se	Mean -	0.32
Units -	ppm	Median -	0.30
DL -	0.1	Mode -	0.30
Method -	ICPMS	Range -	0.6
N -	190	StD -	0.11
N>DL -	185	CV -	0.335



MAP LEGEND

- Primary Roads
- Secondary Road
- Rail
- Lakes & Streams
- Contours
- Ice
- Provincial Park Land & Reserves
- Indian Reserves

Disclaimer: While every effort has been taken to ensure the accuracy of the information in this release package, the data is provided in an "as-is" basis, without any warranty, guarantee or representation of any kind, whether expressed or implied. It is the responsibility of the user to check the facts before entering any financial or other commitment based upon this information.

Considerable effort has been taken to ensure that the data files are free of error. Please contact Geoscience BC if any discrepancies arise.

**QUEST South
Regional Geochemical Data**

**SOUTHERN
BRITISH COLUMBIA**
(082E, L, M; 092H, I, J, O & P)



TRANSVERSE MERCATOR PROJECTION
NORTH AMERICAN DATUM 1983

Silver (Ag)

Percentile	Concentrations		
	Stream	Lake	Till
MAX	23100	480	2698
95TH	353	109	333
90TH	234	74	249
70TH	106	39	158
50TH	65	27	111
30TH	41	19	84
MIN	2	3	16

Summary Statistics

Stream Sediments

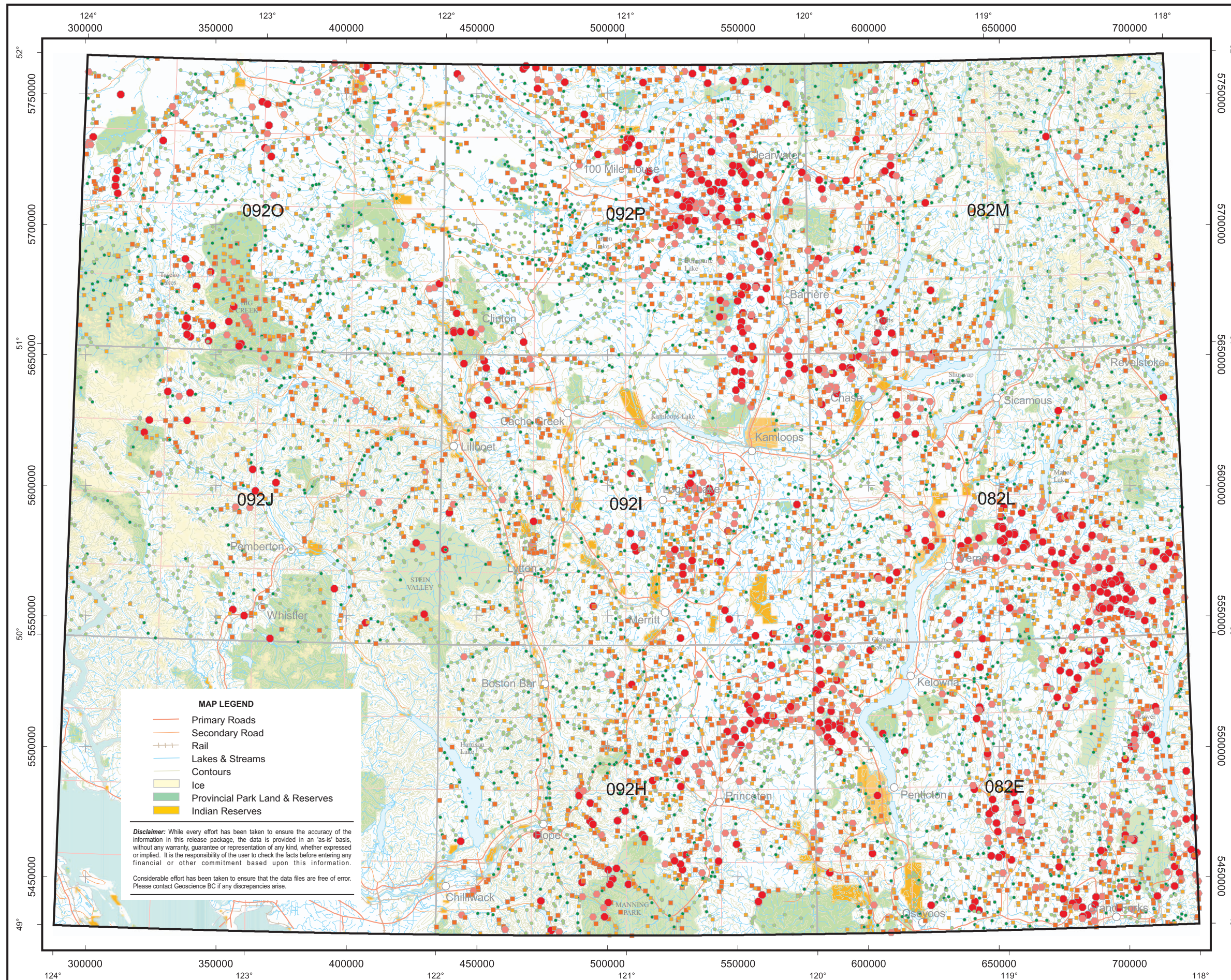
Variable -	Ag	Mean -	122.2
Units -	ppb	Median -	65.0
DL -	2	Mode -	29.0
Method -	ICPMS	Range -	23098
N -	8545	StD -	419.73
N>DL -	8511	CV -	3.434

Lake Sediments

Variable -	Ag	Mean -	38.4
Units -	ppb	Median -	27.0
DL -	2	Mode -	11.0
Method -	ICPMS	Range -	477
N -	769	StD -	40.27
N>DL -	769	CV -	1.049

Basal Till Samples

Variable -	Ag	Mean -	158.6
Units -	ppb	Median -	111.0
DL -	2	Mode -	57.0
Method -	ICPMS	Range -	2682
N -	190	StD -	221.69
N>DL -	190	CV -	1.397



MAP LEGEND

- Primary Roads
- Secondary Road
- Rail
- Lakes & Streams
- Contours
- Ice
- Provincial Park Land & Reserves
- Indian Reserves

Disclaimer: While every effort has been taken to ensure the accuracy of the information in this release package, the data is provided in an "as-is" basis, without any warranty, guarantee or representation of any kind, whether expressed or implied. It is the responsibility of the user to check the facts before entering any financial or other commitment based upon this information.

Considerable effort has been taken to ensure that the data files are free of error. Please contact Geoscience BC if any discrepancies arise.

**QUEST South
Regional Geochemical Data**

**SOUTHERN
BRITISH COLUMBIA**
(082E, L, M; 092H, I, J, O & P)



TRANSVERSE MERCATOR PROJECTION
NORTH AMERICAN DATUM 1983

Sodium (Na)

Percentile	Concentrations		
	Stream	Lake	Till
MAX	1.855	6.850	0.980
95TH	0.073	2.248	0.163
90TH	0.057	1.144	0.137
70TH	0.031	0.279	0.103
50TH	0.020	0.109	0.085
30TH	0.014	0.059	0.067
MIN	0.001	0.011	0.045

Summary Statistics

Stream Sediments

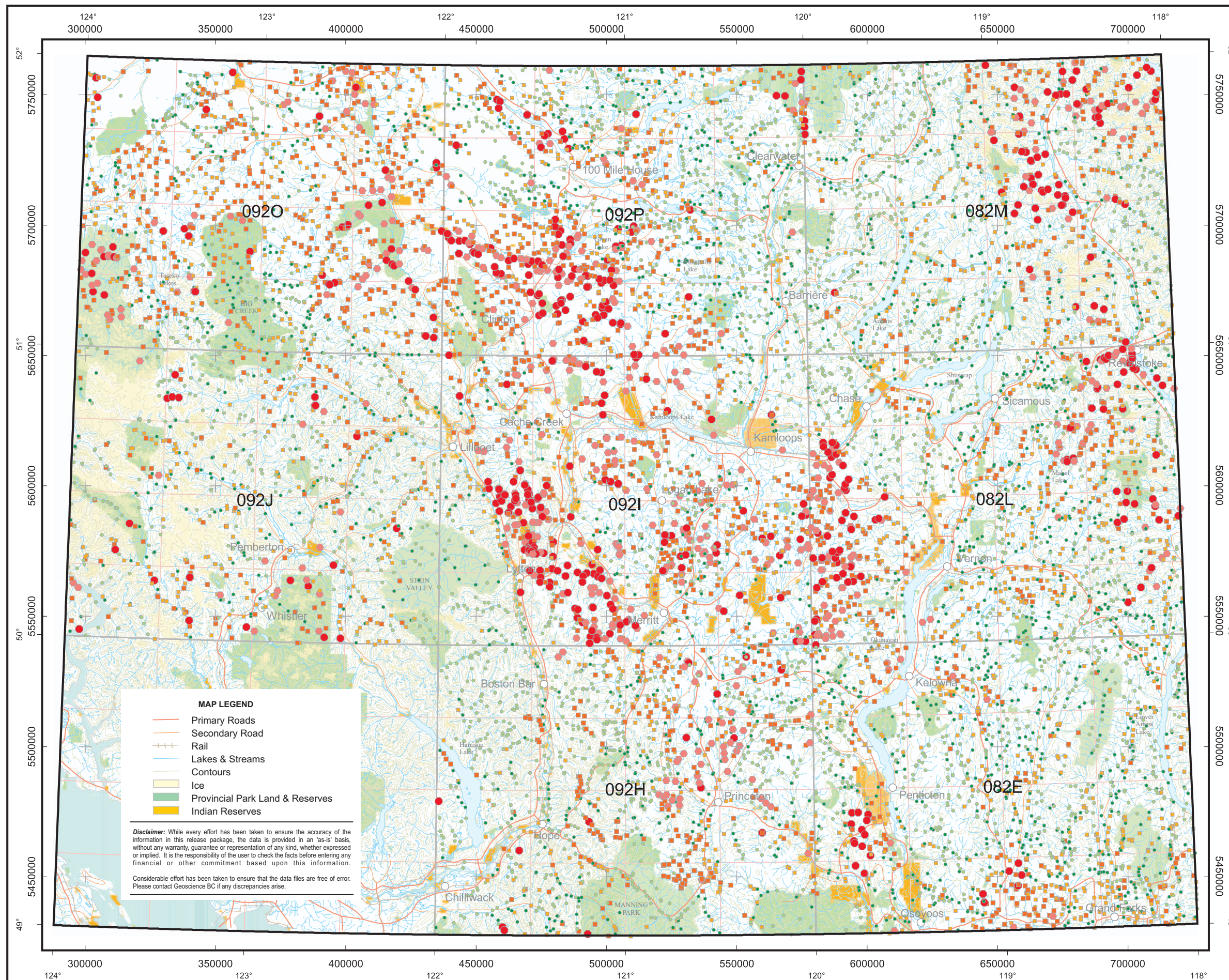
Variable -	Na	Mean -	0.03
Units -	%	Median -	0.02
DL -	.001	Mode -	0.01
Method -	ICPMS	Range -	1.854
N -	8545	StD -	0.06
N>DL -	8448	CV -	1.853

Lake Sediments

Variable -	Na	Mean -	0.43
Units -	%	Median -	0.11
DL -	.001	Mode -	0.04
Method -	ICPMS	Range -	6.839
N -	769	StD -	0.82
N>DL -	769	CV -	1.892

Basal Till Samples

Variable -	Na	Mean -	0.10
Units -	%	Median -	0.09
DL -	.001	Mode -	0.06
Method -	ICPMS	Range -	0.935
N -	190	StD -	0.10
N>DL -	190	CV -	0.974



MAP LEGEND

- Primary Roads
- Secondary Road
- Rail
- Lakes & Streams
- Contours
- Ice
- Provincial Park Land & Reserves
- Indian Reserves

Disclaimer: While every effort has been taken to ensure the accuracy of the information in this release package, the data is provided in an "as-is" basis, without any warranty, guarantee or representation of any kind, whether expressed or implied. It is the responsibility of the user to check the facts before entering any financial or other commitment based upon this information.

Considerable effort has been taken to ensure that the data files are free of error. Please contact Geoscience BC if any discrepancies arise.

**QUEST South
Regional Geochemical Data**

**SOUTHERN
BRITISH COLUMBIA**
(082E, L, M; 092H, I, J, O & P)



TRANSVERSE MERCATOR PROJECTION
NORTH AMERICAN DATUM 1983

Strontium (Sr)

Percentile	Concentrations		
	Stream	Lake	Till
MAX	2120.0	4890.1	311.0
95TH	206.0	944.3	208.5
90TH	147.0	742.0	166.5
70TH	73.8	307.7	113.0
50TH	49.4	170.1	93.0
30TH	32.9	93.1	73.5
MIN	0.3	11.7	32.0

Summary Statistics

Stream Sediments

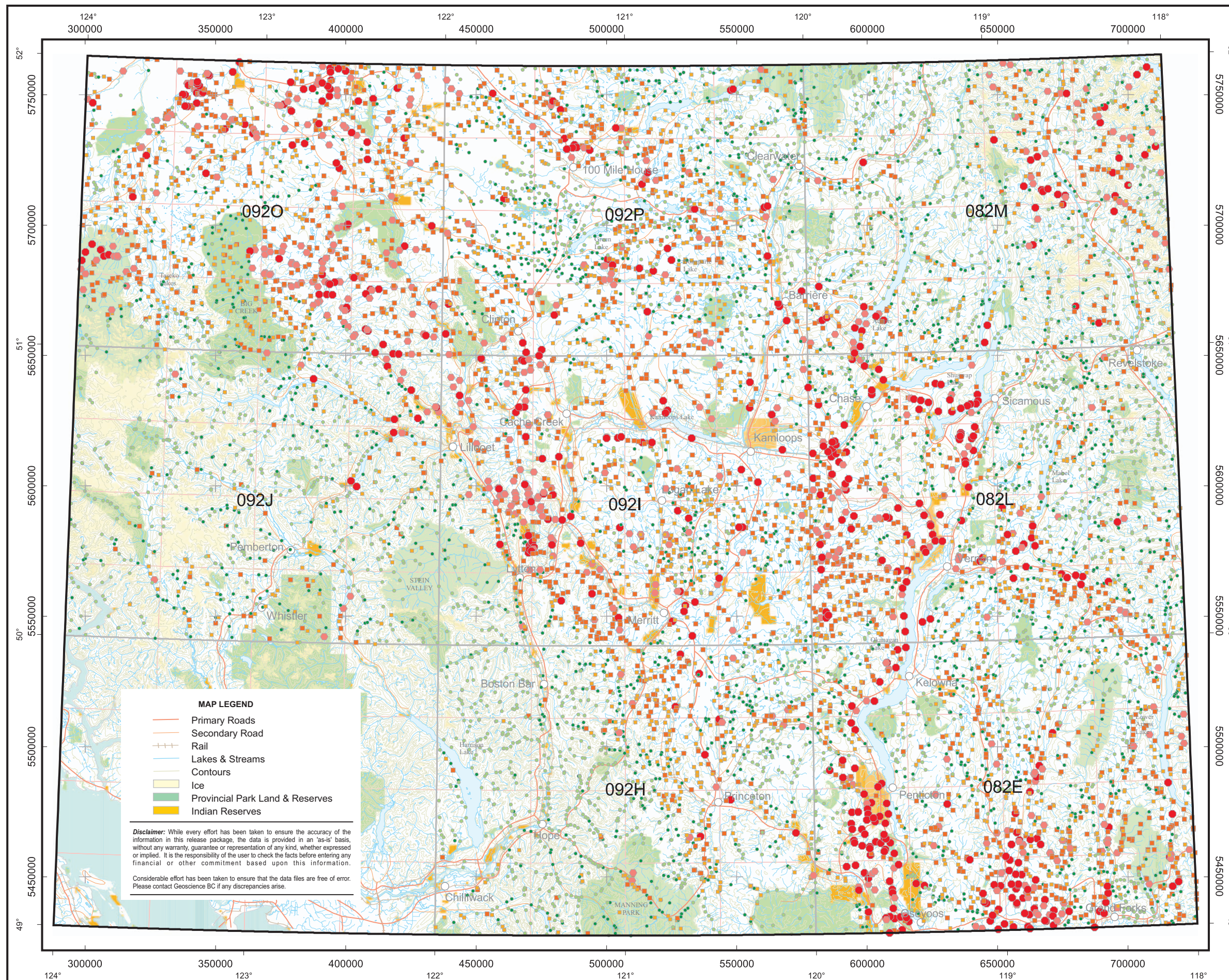
Variable -	Sr	Mean -	76.36
Units -	ppm	Median -	49.40
DL -	0.2	Mode -	34.00
Method -	ICPMS	Range -	2119.7
N -	8545	StD -	110.26
N>DL -	8545	CV -	1.444

Lake Sediments

Variable -	Sr	Mean -	309.20
Units -	ppm	Median -	170.10
DL -	0.2	Mode -	37.20
Method -	ICPMS	Range -	4878.4
N -	769	StD -	409.86
N>DL -	769	CV -	1.326

Basal Till Samples

Variable -	Sr	Mean -	105.11
Units -	ppm	Median -	93.00
DL -	0.2	Mode -	73.50
Method -	ICPMS	Range -	279.0
N -	190	StD -	50.19
N>DL -	190	CV -	0.477



MAP LEGEND

- Primary Roads
- Secondary Road
- Rail
- Lakes & Streams
- Contours
- Ice
- Provincial Park Land & Reserves
- Indian Reserves

Disclaimer: While every effort has been taken to ensure the accuracy of the information in this release package, the data is provided in an "as-is" basis, without any warranty, guarantee or representation of any kind, whether expressed or implied. It is the responsibility of the user to check the facts before entering any financial or other commitment based upon this information.

Considerable effort has been taken to ensure that the data files are free of error. Please contact Geoscience BC if any discrepancies arise.

**QUEST South
Regional Geochemical Data**

**SOUTHERN
BRITISH COLUMBIA**
(082E, L, M; 092H, I, J, O & P)



TRANSVERSE MERCATOR PROJECTION
NORTH AMERICAN DATUM 1983

Sulphur (S)

Percentile	Concentrations		
	Stream	Lake	Till
MAX	3.83	8.56	0.46
95TH	0.15	1.49	0.06
90TH	0.10	1.17	0.04
70TH	0.05	0.62	0.02
50TH	0.03	0.44	0.02
30TH	0.02	0.30	0.02
MIN	0.01	0.03	0.02

Summary Statistics

Stream Sediments

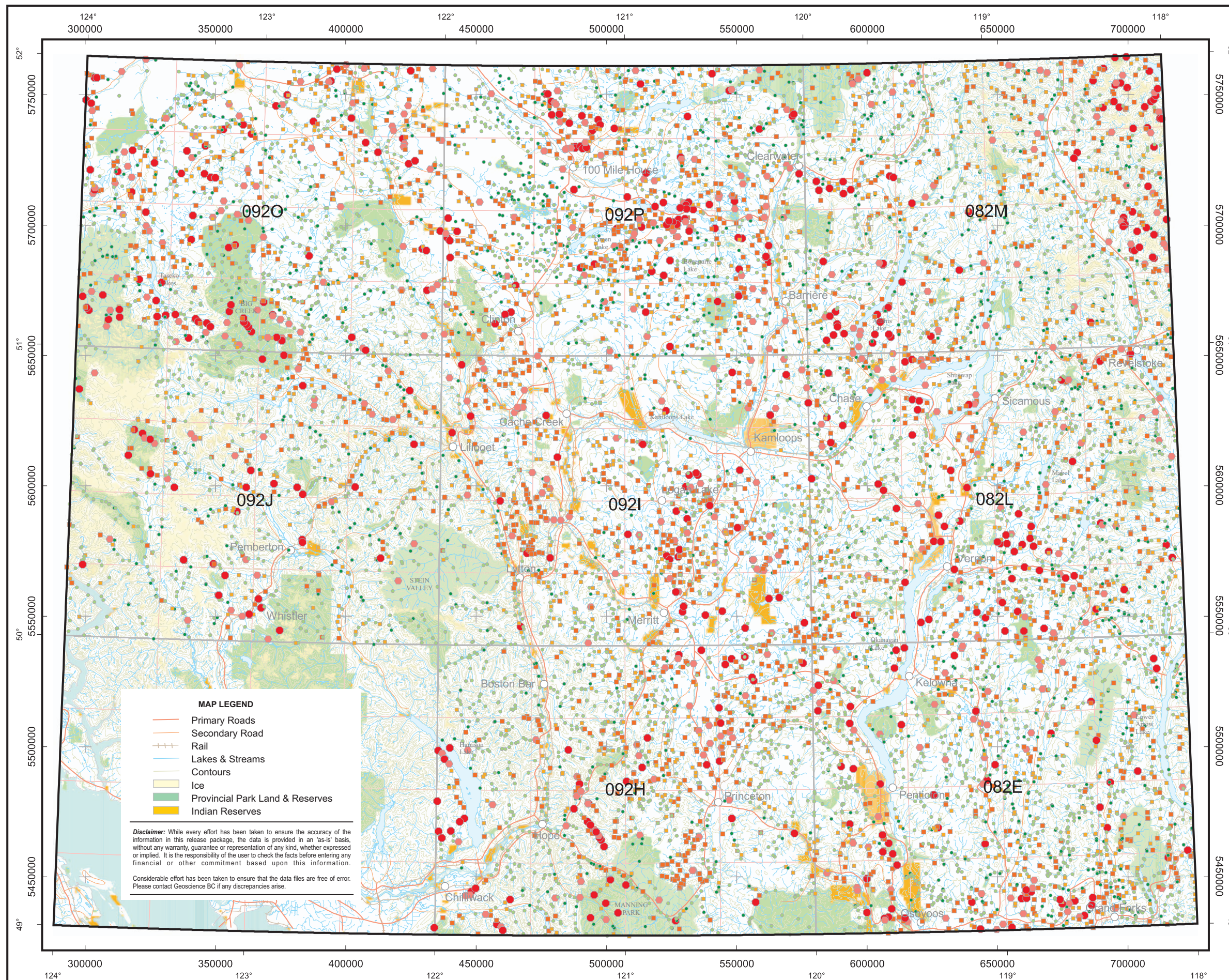
Variable -	S	Mean -	0.05
Units -	%	Median -	0.03
DL -	0.01	Mode -	0.01
Method -	ICPMS	Range -	3.82
N -	8545	StD -	0.09
N>DL -	6442	CV -	1.807

Lake Sediments

Variable -	S	Mean -	0.58
Units -	%	Median -	0.44
DL -	0.01	Mode -	0.43
Method -	ICPMS	Range -	8.53
N -	769	StD -	0.53
N>DL -	769	CV -	0.918

Basal Till Samples

Variable -	S	Mean -	0.03
Units -	%	Median -	0.02
DL -	0.01	Mode -	0.02
Method -	ICPMS	Range -	0.44
N -	190	StD -	0.04
N>DL -	190	CV -	1.285



MAP LEGEND

- Primary Roads
- Secondary Road
- Rail
- Lakes & Streams
- Contours
- Ice
- Provincial Park Land & Reserves
- Indian Reserves

Disclaimer: While every effort has been taken to ensure the accuracy of the information in this release package, the data is provided in an "as-is" basis, without any warranty, guarantee or representation of any kind, whether expressed or implied. It is the responsibility of the user to check the facts before entering any financial or other commitment based upon this information.

Considerable effort has been taken to ensure that the data files are free of error. Please contact Geoscience BC if any discrepancies arise.