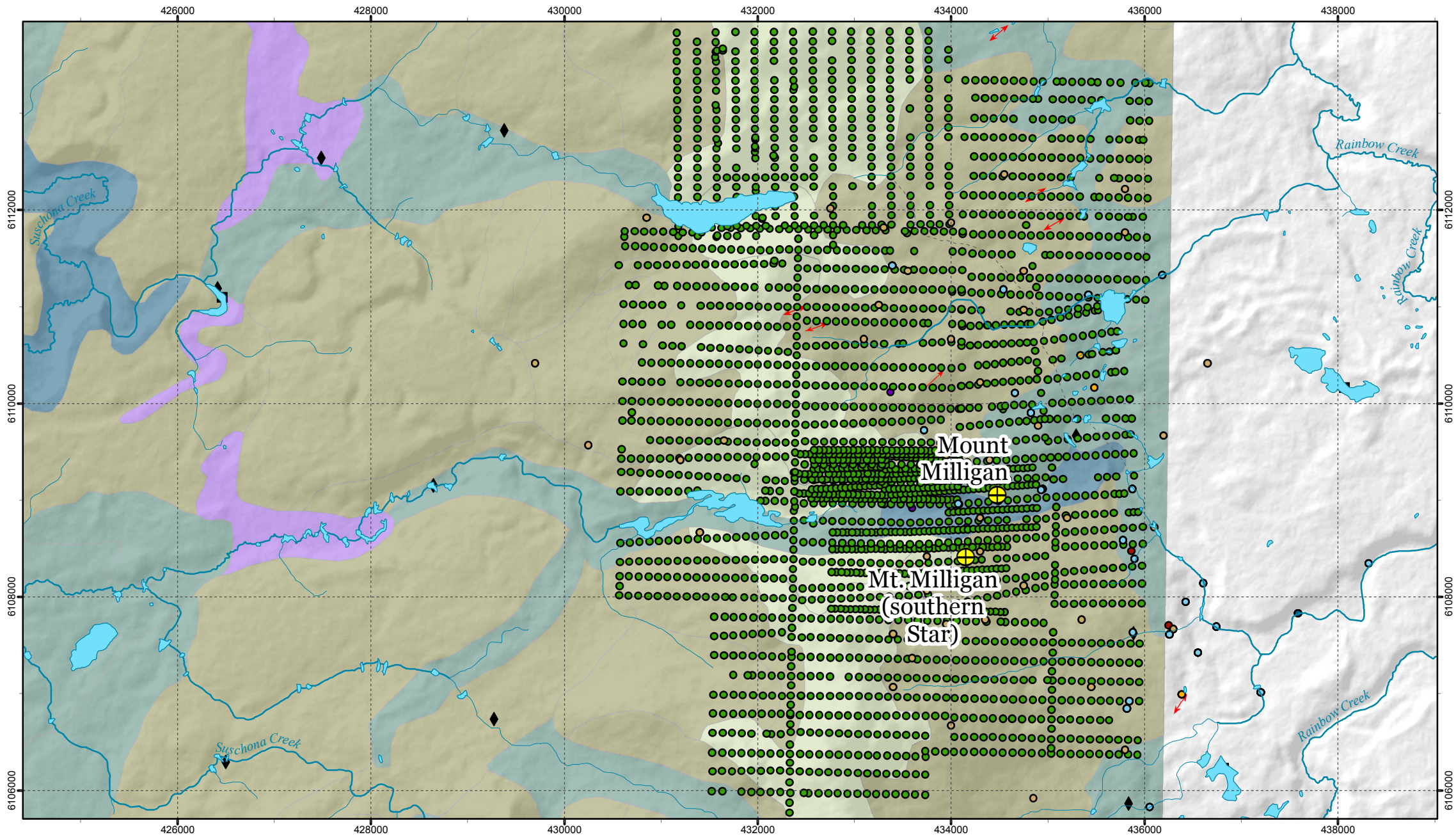


# SURFICIAL GEOCHEMISTRY OF THE MOUNT MILLIGAN PORPHYRY DEPOSIT, BRITISH COLUMBIA, CANADA



- Water Geochemistry, ARIS\_28210\_MS14
- Water Geochemistry, ARIS\_28210\_MEICP41
- Till Geochemistry, BCGS-OF1996-22
- Soil Geochemistry, BHP
- Silt Geochemistry, ARIS\_28210
- MtMilligan\_GC\_SampleInfo\_ARIS\_28210
- Geochemistry, OF1996
- MtMilligan\_GC\_BLEG\_ARIS\_28210

#### RGS Geochem Sample Type

- Lake Sediment
- Stream Sediment

#### Ice-Flow Indicators (points)

##### SENSE

- Bidirectional
- Unidirectional

#### Transported Materials

- Fluvial
- Glaciofluvial
- Till (Colluviated)
- Till (Morainal)

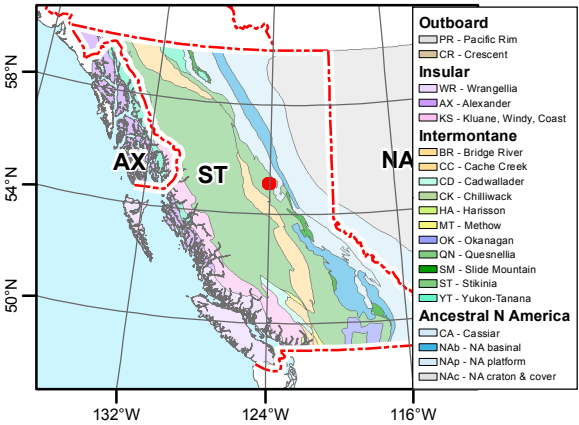
#### Organic Deposits

- Undifferentiated organic

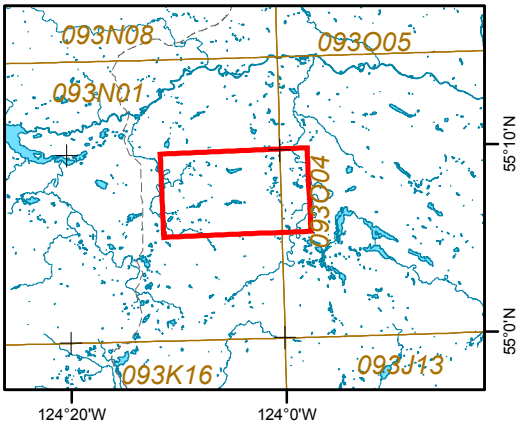
#### Anthropogenic and Other Deposits

- N/A or Unspecified

#### CORDILLERAN TERRANES IN BRITISH COLUMBIA



#### REGIONAL MAP REFERENCE



#### MAP DOCUMENTATION

Geochemical data from surficial materials were obtained, digitized and compiled herein from various sources. Most of the soil geochemical data were captured from historical assessment reports filed with the Ministry of Energy, Mines and Petroleum Resources of British Columbia's ARIS system, and other public data sources.

This map and related data and map products are results from the "Geochemical Models for BC Porphyry Deposits: Outcropping, Blind and Buried Examples" project conducted by Fred Blaine, Sara Jenkins and Craig J.R. Hart at MDRU and funded by Geoscience BC (Geoscience BC Project 2009-048). Additional cartographic support was provided by Gabrielle Barbosa da Silva. Source information for the various data provided in this map package can be found in the accompanying Project Documentation file.

Although all attempts have been made to ensure that the information provided herein is valid, due of the historical nature of most of the geochemical data, neither Geoscience BC, nor the authors, assume any liability for the correctness of the data or their use in this or any derivative products.

#### MAP SPECIFICATIONS

Coordinate System: NAD 1983 UTM Zone 10N  
Projection: Transverse Mercator  
Datum: North American 1983  
Units: Meter  
Printing Date: 15/12/2016

#### SUGGESTED CITATION

Blaine, F., Jenkins, S., and Hart, C.J.R., 2016. Surficial geochemistry of the Mount Milligan Porphyry Deposit, British Columbia, Canada, Geoscience BC Report 2016-15-H. Mineral Deposit Research Unit. Available at: <http://www.geosciencebc.com/s/2009-048.asp>

#### CONTACT

MDRU-Mineral Deposit Research Unit  
The University of British Columbia  
2020 - 2207 Main Mall  
Vancouver BC V6T 1Z4 Canada  
Ph: +1-604-822-6136  
Email: [mdru@eoas.ubc.ca](mailto:mdru@eoas.ubc.ca)  
<http://www.mdru.ubc.ca/>

#### Surficial Geochemistry of the Mount Milligan Porphyry Deposit, British Columbia, Canada

Portions of NTS 093N/01, 093O/04

Fred Blaine, Sara Jenkins and Craig J.R. Hart  
MDRU - Mineral Deposit Research Unit  
The University of British Columbia

Geoscience BC Report 2016-15-H

1:50,000

